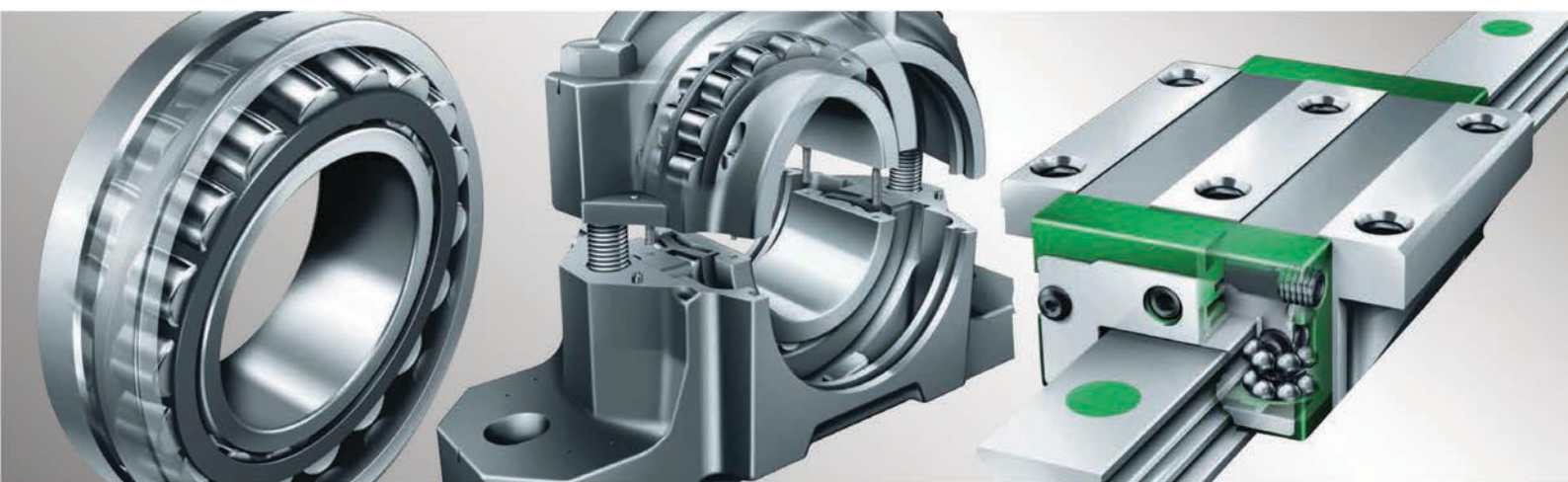


BOMBAS DE LUBRIFICAÇÃO INDUSTRIAL E ACESSÓRIOS



PRODUTO - SERVIÇO - ENGENHARIA - CONSULTORIA

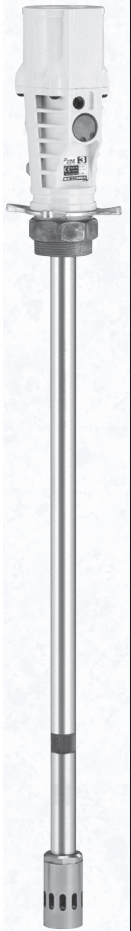
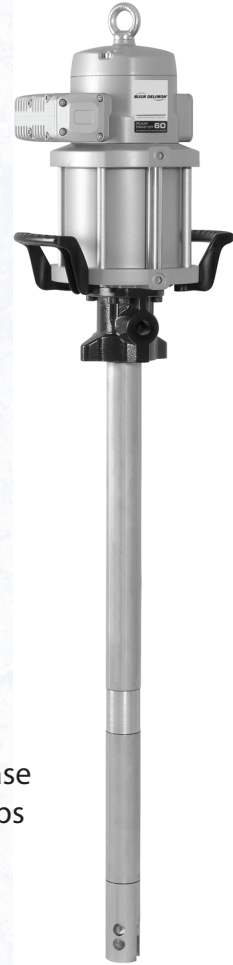
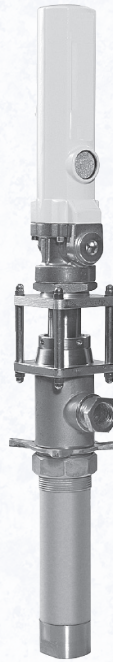
Industrial Lubrication Pumps Hose Reels and Accessories



Grease Control Handle
with Digital Meter



Hose Reels



Oil and Grease
Barrel Pumps



Trucks, Dollies, Bases



Manual Pumps

Standard Duty Oil Transfer Pumps

5 G.P.M.

2" Air motor (51mm) - 3" Stroke (75mm)



1:1 Ratio PM2 Transfer Pumps - Oil

Ideal for transferring high volumes of all types of oils (mineral oil, motor oil, hydraulic oil, ATF, cutting oil, diesel, kerosene, etc.) through short runs with small pressure drops.

Highly efficient and reliable, very low noise level, low air consumption. Built in exhaust mufflers, standard.

Patented double-action pump design assures even flow of fluid only 3 parts in the air motor—quick and easy maintenance.

Precision corrosion-resistant parts, high alloy materials, quality seals. Heavy-duty, distortion-free pump tubes.

Built in port for optional F609007 pressure relief valve.

PM2 Technical Data

| | |
|------------------------------------|---------------------------|
| Max. air pressure | 140 psi (10 bar) |
| Min. air pressure | 20 psi (1.5 bar) |
| Avg. air cons.* | 5.3 scfm/min.(150NL/min.) |
| Max. capacity at 150cpm** | 5.3 gal./min. (20L/Min.) |
| Max. outlet pressure(140 psi air) | 140psi (10 bar) |
| Air motor diameter | 2" (51 mm) |
| Air inlet thread | 1/4"NPT(F) |
| Pump outlet thread | 3/4"NPT(F) |
| Fluid inlet thread(Stub pump only) | 1"NPT(F) |
| Bung adapter thread | 2" (M) |

*Air consumption with 90 psi (6 bar) air inlet pressure and 150 cycles per minute.

**13.7 gal/min(52 L/min) maximum free delivery at 100 psi (7 bar).

| PM2 Bare Oil Pump Models | |
|--------------------------|---------------------|
| Part # | Description |
| F351120 | Stub Pump |
| F356120 | 16 Gallon Drum Pump |
| F352120 | 55 Gallon Drum Pump |



| 1:1 PM2 Oil Pump Packages | |
|---------------------------|--|
| Model F230 | Universal Stub Pump |
| Includes the following: | |
| F351120 | 1:1 Ratio pump with bung adapter |
| F904 | Connecting hose installation hook-up kit |
| Model F226 | For 16 gal. open top drum |
| Includes the following: | |
| F356120 | 1:1 Ratio pump with bung adapter |
| F904 | Connecting hose installation hook-up kit |
| Model F228 | For 55 gal. open top drum |
| Includes the following: | |
| F352120 | 1:1 Ratio pump with bung adapter |
| F904 | Connecting hose installation hook-up kit |



NOTE: Two-Year Warranty Standard on Above Pumps. Standard 2" Bung Bushing Supplied with Above Pumps

Medium Pressure Oil Pumps for transfer & distribution systems

3 G.P.M.

2" Air motor (51mm) - 3" Stroke (75mm)



3:1 Ratio PM2 Transfer Pump - Oil

Ideal for use in oil distribution systems that include pipe lines, hose reels and meters. For portable and stationary systems, for all types of oils and gear oils.

Highly efficient and reliable, very low noise level, low air consumption. Built in exhaust mufflers, standard.

Patented double-action pump design assures even flow of fluid only 3 parts in the air motor—quick and easy maintenance.

Precision corrosion-resistant parts, high alloy materials, quality seals. Heavy-duty, distortion-free pump tubes. Built in port for optional F609007 pressure relief valve.

| PM2 Bare Oil Pump Models | |
|--------------------------|---------------------|
| Part # | Description |
| F353120 | Stub Pump |
| F358120 | 16 Gallon Drum Pump |
| F354120 | 55 Gallon Drum Pump |

PM2 Technical Data

| | |
|------------------------------------|--------------------------|
| Max. air pressure | 140 psi (10 bar) |
| Min. air pressure | 20 psi (1.5 bar) |
| Avg. air cons.* | 6.4 scfm (180 NL/min) |
| Max. capacity @ 200cpm** | 2.7 gal./min. (10L/Min.) |
| Max. outlet pressure(140 psi air) | 420psi (30 bar) |
| Air motor diameter | 2" (51 mm) |
| Air inlet thread | 1/4"NPT(F) |
| Fluid inlet thread(Stub pump only) | 3/4"NPT(F) |
| Pump outlet thread | 1/2"NPT(F) |
| Bung adapter thread | 2" (M) |

*Air consumption with 90psi(6 bar) air inlet pressure and 200 cycles per minute.

**9.3 gal/min(35L/min) maximum free delivery at 100 psi (7 bar).

Model F353120



3:1 PM2 Oil Pump Packages

Model F202 For 16 gal. bung type drum.

Includes the following:

F358120 3:1 Ratio pump with cover mounting adapter

F904 Connecting hose hook-up kit.

Model F204 For 16 gal. open top drum.

Includes the following:

F358120 3:1 Ratio pump with cover mounting adapter

F1936 Deluxe Drum cover for 16 gal. drum.

F904 Connecting hose hook-up kit.

Model F222 For 55 gal. bung type drum.

Includes the following:

F354120 3:1 Ratio pump with 2" bung bushing.

F904 Connecting hose hook-up kit.

For 55 gal. open top drum (Former Model F224)

Order the following:

F354120 3:1 Ratio pump with cover mounting adapter

F1938 Deluxe Drum cover for 55 gal. drum.

F904 Connecting hose hook-up kit.

Model F202



Model F222



NOTE: Two-Year Warranty Standard on Above Pumps. Standard 2" Bung Bushing Supplied with Above Pumps

Standard Duty Medium Pressure Oil Pumps

3 G.P.M.

3.5" Air motor (88mm)- 4" Stroke (100mm)



5:1 Ratio PM4 Pumps - Oil

Heavy-duty pumps designed to pump high volumes of oil, even those of higher viscosity (SAE 140), through long lines, hose reels and meters. Capable of serving several outlets simultaneously.

Patented double-action pump design assures even flow of fluid. Low noise level, efficient, reliable, heavy-duty design. Built in exhaust mufflers, standard.

Precision corrosion-resistant parts, high alloy materials, quality seals. Heavy-duty, distortion-free pump tubes.

Muffled exhaust, no icing. Long stroke means fewer cycles for less wear and longer pump life. In a class by itself, hi-tech, rugged but simple design. Built in port for optional F609007 pressure relief valve.

| PM4 Bare Oil Pump Models | |
|--------------------------|---------------------|
| Part # | Description |
| F347120 | Stub Pump |
| F347520 | 16 Gallon Drum Pump |
| F348120 | 55 Gallon Drum Pump |

PM4 Technical Data

| | |
|------------------------------------|--------------------------|
| Max. air pressure | 140 psi (10 bar) |
| Min. air pressure | 20 psi (1.5 bar) |
| Avg. air consumption* | 14scfm (400NL/min.) |
| Max. capacity @ 125cpm** | 2.7 gal./min. (10L/Min.) |
| Max. pressure output(140 psi air) | 700psi (50 bar) |
| Air motor diameter | 3-1/2" (88 mm) |
| Air inlet thread | 3/8"NPT(F) |
| Pump outlet thread | 3/4"NPT(F) |
| Fluid inlet thread(Stub pump only) | 1"NPT(F) |
| Bung adapter thread | 2" (M) |

*Air Consumption with 90psi (6 bar) air inlet pressure and 125 cycles per minute.
 **6.6 gal/min(25L/min) maximum free delivery at 100psi (7bar)



Model F347120

5:1 PM4 Oil Pumps

| | |
|-----------------------------------|--|
| For 16 gal. bung type drum | (Former Model F402) |
| Order the following: | |
| Model F347520 | 5:1 Ratio pump with 2" bung bushing |
| Model F906 | Connecting hose hook-up kit. |
| For 16 gal. open top drum | (Former Model F404) |
| Order the following: | |
| Model F347520 | 5:1 Ratio pump with cover mounting adapter |
| Model F1936 | Drum cover for 16 gal. drum. |
| Model F906 | Connecting hose hook-up kit. |
| For 55 gal. bung type drum | (Former Model F422) |
| Order the following: | |
| Model F348120 | 5:1 Ratio pump with 2" bung bushing |
| Model F906 | Connecting hose hook-up kit. |
| For 55 gal. open top drum | (Former Model F424) |
| Order the following: | |
| Model F348120 | 5:1 Ratio pump with cover mounting adapter |
| Model F1938 | Drum cover for 55 gal. drum. |
| Model F906 | Connecting hose hook-up kit. |

Model F348120



NOTE: Two-Year Warranty Standard on Above Pumps. Standard 2" Bung Bushing Supplied with Above Pumps

Heavy Duty Medium Pressure Oil Pumps

3.2 gal/min. (12 Liter/min.)

3.15" Air motor (80mm) - 3.15" Stroke (80mm)



**5:1 Ratio PM35
Heavy Duty Medium Pressure Pumps - Oil**

Double acting air operated medium pressure delivery pump for oil distribution applications. Built in port for optional (PN F609007) pressure relief valve. Bung adaptor.

Efficient and reliable—minimum maintenance.

| PM35 Bare Pump Models | |
|-----------------------|----------------------------------|
| Part # | Description |
| F535531 | Stub Pump w/Bung Adapter |
| F535581 | Stub Pump |
| F535511 | 55 Gal. Drum Pump w/Bung Adapter |

| PM35 Technical Data | |
|----------------------------------|--------------------------|
| Max. air pressure | 175 psi (12 bar) |
| Min. air pressure | 30 psi (2 bar) |
| Avg. air consumption* | 12.4 scfm (350 NL/min.) |
| Max. capacity @ 80cpm** | 3.2 gal./min. (12L/Min.) |
| Max. pressure output(175psi air) | 875 psi (60 bar) |
| Air motor diameter | 3-1/8" (80 mm) |
| Suction strain dia.(pump foot) | 2" (50 mm) |
| Air inlet thread | 3/8"NPT(F) |
| Pump outlet thread | 1/2"NPT(F) |
| Fluid inlet thread | 1-1/2"NPT(F) |
| Bung adapter thread | 2" (M) |

*Air Consumption with 72psi (5 bar) air inlet pressure and 80 cycles per minute.
** 8 gal/min(30L/min) maximum free delivery at 100psi (7bar)

| 5:1 PM35 Oil Service Packages | |
|-------------------------------|---|
| Model F535531A | Universal Stub Pump |
| Includes the following: | |
| Model F535531 | 5:1 Ratio pump with bung bushing |
| Model F916 | Connecting hose installation hook-up kit. |
| Model F535511A | For 250 Gal work bench type tank and 55 Gal drums |
| Includes the following: | |
| Model F535511 | 5:1 Ratio pump with bung bushing |
| Model F916 | Connecting hose installation hook-up kit. |



Model F535511A

NOTE: Two-Year Warranty Standard on Above Pumps. Standard 2" Bung Bushing Supplied with select Above Pumps

Heavy Duty High Pressure Oil Pumps

1.9 gal/min. (7 Liter/min.)

3.15" Air motor (80mm) - 3.15" Stroke (80mm)



**8:1 Ratio PM35
Heavy Duty High Pressure Pumps - Oil**

Double acting air operated high pressure and reliable delivery pump for oil distribution applications. Built in port for optional (PN F609008) pressure relief valve. Cast iron pump body for high pressure operation.

Efficient and reliable—minimum maintenance.

| PM35 Bare Pump Models | |
|-----------------------|----------------------------------|
| Part # | Description |
| F535831 | Stub Pump w/Bung Adapter |
| F535881 | Stub Pump |
| F535811 | 55 Gal. Drum Pump w/Bung Adapter |

PM35 Technical Data

| | |
|----------------------------------|-------------------------|
| Max. air pressure | 175 psi (12 bar) |
| Min. air pressure | 30 psi (2 bar) |
| Avg. air consumption* | 12.4 scfm (350 NL/min.) |
| Max. capacity @ 80cpm** | 1.9 gal./min. (7L/Min.) |
| Max. pressure output(175psi air) | 1,400 psi (96 bar) |
| Air motor diameter | 3-1/8" (80 mm) |
| Suction strain dia.(pump foot) | 1-2/3" (42 mm) |
| Air inlet thread | 3/8"NPT(F) |
| Pump outlet thread | 1/2"NPT(F) |
| Fluid inlet thread | 1"NPT(F) |
| Bung adapter thread | 2" (M) |

*Air Consumption with 72psi (5 bar) air inlet pressure and 80 cycles per minute.

** 4.5 gal/min(17L/min) maximum free delivery at 100psi (7bar)

8:1 PM35 Oil Service Packages

Model F535831A Universal Stub Pump

Includes the following:

Model F535831 8:1 Ratio pump with bung bushing

Model F916 Connecting hose installation hook-up kit.

Model F535811A For 250 Gal work bench type tank and 55 Gal drums

Includes the following:

Model F535811 8:1 Ratio pump with bung bushing

Model F916 Connecting hose installation hook-up kit.



Model F535831A

NOTE: Two-Year Warranty Standard on Above Pumps. Standard 2" Bung Bushing Supplied with select Above Pumps

Heavy Duty Oil Pumps - Flange Mounted Pump

12 G.P.M.

4.5" Air motor (115mm)- 4" Stroke (100mm)



3:1 Ratio PM45 Pumps - Oil

Double acting air operated medium pressure and high delivery pump for large volume transfer applications. Built in port for optional F609007 pressure relief valve. Flange mounted pump.

Fluids Handled are Synthetic and mineral based oil, Hydraulic oil, Gear lube & Transmission fluid.

Markets served are Construction, Mining, Fleets, Railroad, Marine and In-Plant Oil Distribution.

| PM45 Bare Oil Pump Models | |
|---------------------------|---------------------|
| Part # | Description |
| F536331 | Universal Stub Pump |

PM45 Technical Data

| | |
|------------------------------------|-------------------------|
| Max. air pressure | 170 psi (12 bar) |
| Min. air pressure | 20 psi (1.5 bar) |
| Avg. air consumption* | 28scfm (800NL/min.) |
| Max. capacity @ 80cpm** | 12 gal./min. (45L/Min.) |
| Max. pressure output(140 psi air) | 510psi (36 bar) |
| Air motor diameter | 4-1/2" (115 mm) |
| Air inlet thread | 1/2"NPT(F) |
| Pump outlet thread | 3/4"NPT(F) |
| Fluid inlet thread(Stub pump only) | 1-1/2"NPT(F) |

*Air Consumption with 72psi (5 bar) air inlet pressure and 80 cycles per minute.

**32 gal/min(120L/min) maximum free delivery at 100psi (7bar)

7 G.P.M.

4.5" Air motor (115mm)- 4" Stroke (100mm)



6:1 Ratio PM45 Pumps - Oil

Double action air operated medium pressure pump for large system with simultaneous operation outlets that require a high delivery pump. Built in port for optimal F609007 pressure relief valve. Flange mounted pump.

Fluids Handled are Synthetic and Mineral Based Oil, Hydraulic Oil, Gear Lube & Transmission Fluid.

Markets served are Large Auto & Truck Dealers, Construction Equipment Maintenance, Mining Equipment Maintenance, Large Fleets, Railroad & Mass Transit Maintenance, Marine & In Plant Oil distribution.

| PM45 Bare Oil Pump Models | |
|---------------------------|---------------------|
| Part # | Description |
| F536631 | Universal Stub Pump |

PM45 Technical Data

| | |
|------------------------------------|--------------------------|
| Max. air pressure | 170 psi (12 bar) |
| Min. air pressure | 20 psi (1.5 bar) |
| Avg. air consumption* | 29scfm (830NL/min.) |
| Max. capacity @ 80cpm** | 6.6 gal./min. (25L/Min.) |
| Max. pressure output(140 psi air) | 1020psi (72 bar) |
| Air motor diameter | 4-1/2" (115 mm) |
| Air inlet thread | 1/2"NPT(F) |
| Pump outlet thread | 3/4"NPT(F) |
| Fluid inlet thread(Stub pump only) | 1-1/2"NPT(F) |

*Air Consumption with 72psi (5 bar) air inlet pressure and 80 cycles per minute.

**25 gal/min(95L/min) maximum free delivery at 100psi (7bar)

NOTE: Two-Year Warranty Standard on Above Pumps.

Heavy Duty Oil Pumps - Flange Mounted Pump

4 G.P.M.

4.5" Air motor (115mm)- 4" Stroke (100mm)



10:1 Ratio PM45 Pumps - Oil

Double acting air operated moderate pressure pump for very large oil systems or when low air pressure or cold temperatures would limit pump performance. Built in port for optional F609008 pressure relief valve. Flange mounted pumps. Pump F536011 can also use bung adaptor F360006 for bung mounting.

Fluids Handled are Synthetic and Mineral Based Oil, Hydraulic Oil, Gear Lube & Transmission Fluid.

Markets served are Large Auto & Truck Dealers, Construction Equipment Maintenance, Mining Equipment Maintenance, Large Fleets, Lube Trucks, Railroad & Mass Transit Maintenance, Marine & In Plant Oil distribution.

PM45 Bare Oil Pump Models

| Part # | Description |
|---------|---------------------|
| F536031 | Universal Stub Pump |
| F536011 | 55 Gal Drum Pump |

PM45 Technical Data

| | |
|------------------------------------|------------------------|
| Max. air pressure | 170 psi (12 bar) |
| Min. air pressure | 20 psi (1.5 bar) |
| Avg. air consumption* | 30scfm (850NL/min.) |
| Max. capacity @ 80cpm** | 4 gal./min. (15L/Min.) |
| Max. pressure output(140 psi air) | 1700psi (120 bar) |
| Air motor diameter | 4-1/2" (115 mm) |
| Air inlet thread | 1/2"NPT(F) |
| Pump outlet thread | 3/4"NPT(F) |
| Fluid inlet thread(Stub pump only) | 1-1/2"NPT(F) |

*Air Consumption with 72psi (5 bar) air inlet pressure and 80 cycles per minute.

**17.2 gal/min(65L/min) maximum free delivery at 100psi (7bar)



Model F536031

9 G.P.M.

6" Air motor (150mm)- 4" Stroke (100mm)



6:1 Ratio PM60 Pumps - Oil

Double acting air operated medium pressure and high delivery pump, for large installations with simultaneous operation outlets and applications that require large, constant delivery rates. Built in port for optional (PN F609007) pressure relief valve. Flange mounted pump.

PM60 Bare Oil Pump Models

| Part # | Description |
|---------|---------------------|
| F537631 | Universal Stub Pump |

PM60 Technical Data

| | |
|------------------------------------|---------------------------|
| Max. air pressure | 170 psi (12 bar) |
| Min. air pressure | 20 psi (1.5 bar) |
| Avg. air consumption* | 39scfm (1,100NL/min.) |
| Max. capacity @ 80cpm** | 9.25 gal./min. (35L/Min.) |
| Max. pressure output(140 psi air) | 1020psi (72 bar) |
| Air motor diameter | 6" (150 mm) |
| Air inlet thread | 1/2"NPT(F) |
| Pump outlet thread | 3/4"NPT(F) |
| Fluid inlet thread(Stub pump only) | 1-1/2"NPT(F) |

*Air Consumption with 72psi (5 bar) air inlet pressure and 80 cycles per minute.

**26.5 gal/min(100L/min) maximum free delivery at 100psi (7bar)

NOTE: Two-Year Warranty Standard on Above Pumps.

5 G.P.M.

6" Air motor (150mm)- 4" Stroke (100mm)



12:1 Ratio PM60 Pumps - Oil

Double acting air operated moderate pressure and high delivery pump for very large installation with simultaneous operation outlets or when low air pressure or low temperatures would limit pump performance. Built in port for optional (PN F609008) pressure relief valve. Flange mounted pump.

| PM60 Bare Oil Pump Models | |
|---------------------------|---------------------|
| Part # | Description |
| F537131 | Universal Stub Pump |

PM60 Technical Data

| | |
|------------------------------------|--------------------------|
| Max. air pressure | 170 psi (12 bar) |
| Min. air pressure | 20 psi (1.5 bar) |
| Avg. air consumption* | 41scfm (1,150NL/min.) |
| Max. capacity @ 80cpm** | 5.3 gal./min. (20L/Min.) |
| Max. pressure output(140 psi air) | 2040psi (144 bar) |
| Air motor diameter | 6" (150 mm) |
| Air inlet thread | 1/2"NPT(F) |
| Pump outlet thread | 3/4"NPT(F) |
| Fluid inlet thread(Stub pump only) | 1-1/2"NPT(F) |

*Air Consumption with 72psi (5 bar) air inlet pressure and 80 cycles per minute.

**17 gal/min(L/min) maximum free delivery at 100psi (7bar)

OIL PUMP ACCESSORIES

Installation Hook-up Kits

Model F904

Medium pressure connecting hose installation hook-up kit for PM2 1:1 and 3:1 ratio fluid pumps. Includes the following:

| | |
|---------------|---|
| Model F801 | 5' Air hose, 1/4"NPT (M) both ends |
| Model F930F04 | Quick air coupler 1/4"NPT(F) |
| Model F933M04 | Quick air nipple 1/4"NPT (M) |
| Model F857 | 5' medium pressure 3/4"hose 3/4"NPT(M) ends |

Model F906

Medium pressure connecting hose installation hook-up kit for PM4 3:1 and 5:1 ratio fluid pumps. Includes the following:

| | |
|---------------|---|
| Model F812 | 5' Air hose, 3/8"NPT (M) both ends |
| Model F930F06 | Quick air coupler 3/8"NPT(F) |
| Model F933M06 | Quick air nipple 3/8"NPT (M) |
| Model F857 | 5' medium pressure 3/4"hose 3/4"NPT(M) ends |

Model F916

Medium pressure connecting hose installation hook-up kit for PM35 5:1 and 8:1 ratio fluid pumps. Includes the following:

| | |
|---------------|---|
| Model F813 | 5' Air hose, 3/8"NPT (M) both ends |
| Model F930F06 | Quick air coupler 3/8"NPT(F) |
| Model F933M06 | Quick air nipple 3/8"NPT (M) |
| Model F846 | 5' medium pressure 1/2"hose 1/2"NPT(M) ends |

Model F914

Medium pressure connecting hose installation hook-up kit for PM45 and PM60 fluid pumps. Includes the following:

| | |
|---------------|---|
| Model F822 | 2' Air hose, 1/2"NPT (M) both ends |
| Model F935F08 | Quick air coupler 1/2"NPT(F) |
| Model F936M08 | Quick air nipple 1/2"NPT (M) |
| Model F857 | 5' medium pressure 3/4"hose 3/4"NPT(M) ends |
| Model F1981 | 90° swivel 1/2"NPTF X 1/2"NPTM |
| Model F1982 | 90° swivel 3/4"NPTF X 3/4"NPTM |

NOTE: Two-Year Warranty Standard on Above Pumps.

Oil Pump Accessories Cont.

F1936



F360133



F360006



F94112023



F418026



F244901



F900



F360139



F360132



F360121

| Pump Brackets | P.N. |
|--|---------|
| Wall mount bracket for PM2/PM4, 2" NPTF bung opening. | F900 |
| Floor mount bracket for PM2 & PM4 pumps. | F360120 |
| Wall mount bracket for PM35 2" NPTF bung opening. | F360139 |
| Wall mount bracket for PM35 flange mounted pumps. | F360140 |
| Floor mount bracket for PM45 & PM60 flange mounted pumps.. | F360121 |
| Wall mount bracket for PM45 & PM60 flange mounted pumps. | F360132 |

| OIL PUMP ACCESSORIES - COVERS & BUNGS | |
|--|-----------|
| PM2/PM4 Deluxe Drum Covers | P.N. |
| 16 Gal open top keg | F1936 |
| 55 Gal open top drum | F1938 |
| PM45/PM60 Heavy Duty Drum Covers | P.N. |
| 16 Gal open top keg | F418017 |
| 55 Gal open top drum | F418026 |
| Bung Mount Adapter | F360133 |
| Bung Bushing Adapters | P.N. |
| PM2 1:1 & PM4 3:1 | F360001 |
| PM2 3:1 | F360000 |
| PM4 5:1 & PM35 8:1 | F360002 |
| PM35 5:1 | F609004 |
| PM45 10:1 | F360006 |
| Bung Seal Kit | F2449 |
| Double tap bushing , 2" (M) x 1-1/2" (F) threads. With a 1/8" NPTF opening for pressure relief return line. Use with 1-1/2" (MM) adapter for PM35 5:1 pumps. Use with 1-1/2" (M) x 1" (M) adapter for PM4 3:1 and 5:1 pumps. | F94112023 |
| All weather protection bung adapter cover. When placed between the pump and the bung adapter, prevents water passing to the oil container in outdoors applications. For PM2 3:1 and PM4 5:1 pumps. | F244901 |



Pressure Relief Valves

Model F609007 900 psi

Model F609008 1450 psi

BDI pumps include a 1/4" plug that can be removed and replaced with a pressure relief valve. Relief valves include 36" transparent return tube and 1/4" NPTM fitting.

F609007 is for F2/F4/PM45/PM60

F609008 is for F4/PM45/PM60

F912



| Suction Kits | P.N. |
|--|------|
| Use with PM2 and PM4 pumps. Siphon kit consisting of 40" suction tube with foot valve, 2" bung bushing adaptor, 8' spring reinforced transparent hose, 3/4" (F) swivel end, one PM2 - 3:1 pump to hose connector, 3/4" MM and one PM4 - 3:1 and 5:1 pump to hose connector, 3/4" M x 1" M. Suction tube length: 46" | F910 |
| Part No. F912 Siphon kit for wall mount pumps Use with PM2 3:1 and PM4 - 3:1 and 5:1 pumps. Includes the following: Part No. F900: Wall mount bracket. Part No. F910: Siphon kit. | F912 |
| Part No. F926 Suction hose kit for wall mounted pumps Use with PM35, PM45 and PM60 pumps. Includes the following: Part No. F863506: 6' medium pressure 1 1/2" hose, 1 1/2" NPTM both ends, swivel one end. Part No. F2520: Elbow 1 1/2" NPT M x 1 1/2" NPT F. Order bracket F360139 for PM45 pumps or F360132 for PM45 and PM60 pumps separately. | F926 |

Std Duty Grease Pumps for transfer & distribution systems

21 cu. in./min. (0.7lb./min.)
2.75" Air motor (70mm) - 1.5" Stroke (35mm)



55:1 Ratio PM3 High Pressure Pumps - Grease

High pressure grease pumps handle all types of grease up to and including NLGI 2 directly from 35 lb., 120 lb. and 400 lb. grease containers. For portable and stationary systems that include control handles.

Shovel type self-pumping product piston. Integral intake suction strainer ensures non-fouling operation.

Highly efficient double-action pump design assures even flow of fluid, low noise level and low air consumption. Built in exhaust mufflers, standard.

Efficient and reliable--minimum maintenance.

| PM3 Bare Pump Models | |
|----------------------|-------------------|
| Part # | Description |
| F300 | 35 lb. Pail Pump |
| F302 | 120 lb. Drum Pump |
| F304 | 400 lb. Drum Pump |

PM3 Technical Data

| | |
|----------------------------------|-----------------------------------|
| Max. air pressure | 140 psi (10 bar) |
| Min. air pressure | 20 psi (1.5 bar) |
| Avg. air consumption* | 5.8 scfm (165 NL/min.) |
| Max. delivery** | 0.7lb/min. or 21cu.in.(344cc/min) |
| Max. pressure output(140psi air) | 7,700 psi (530 bar) |
| Air motor diameter | 2-3/4" (70 mm) |
| Suction strain dia.(pump foot) | 1.6" (38 mm) |
| Air inlet thread | 1/4"NPT(F) |
| Pump outlet thread | 1/4"NPT(F)(+1/2"-27M conn) |
| Bung adapter thread | 2" (M) |

*Maximum air consumption with 90 psi (6 bar) air inlet pressure, NLGI-2 grease at 68 °F (20 °C) and 110 cpm.
 ** 1.2lb/min or 36cu.in.(590cc/min) maximum free delivery at 100psi(7 bar).

55:1 PM3 Grease Service Packages

Model F306 For 120 lb. open top drum.

Includes the following:

| | |
|-------------|---|
| Model F302 | 55:1 Ratio pump with cover mounting adapter |
| Model F1936 | Drum cover for 120 lb. drum. |
| Model F903 | Connecting hose installation hook-up kit. |

Model F308 For 400 lb. open top drum.

Includes the following:

| | |
|-------------|---|
| Model F304 | 55:1 Ratio pump with cover mounting adapter |
| Model F1938 | Drum cover for 400 lb. drum. |
| Model F903 | Connecting hose installation hook-up kit. |

Model F335(not shown) For 35 lb. pail.

Includes the following:

| | |
|-------------|---|
| Model F300 | 55:1 Ratio pump with cover mounting adapter |
| Model F1934 | Drum cover for 35 lb. pail. |
| Model F903 | Connecting hose installation hook-up kit. |

NOTE: Order Follower Plates separately



Model F306

Model F308

PM3 Accessories

| Size | Follower Plates |
|--------------------------|-----------------|
| 35 lb. Pail Pump | F962 |
| 120 lb. Drum Pump | F964 |
| 400 lb. Drum Pump | F966 |
| Bung Adpt Bushing | P.N. |
| F300/F302/F304 | F2028 |

NOTE: Two-Year Warranty Standard on Above Pumps. Standard 2" Bung Bushing Supplied with Above pumps

Heavy Duty High Pressure Grease Pumps

36 cu. in./min. (1.1 lb./min.)

3.15" Air motor (80mm) - 3.15" Stroke (80mm)



**60:1 Ratio PM35
Heavy Duty High Pressure Pumps - Grease**

Heavy-Duty double acting pumps that combine high pressure (60:1 pressure ratio) and volume delivery. Recommended for use in distribution and greasing systems that include pipe lines, hose reels, etc. with up to 2 simultaneous use outlets even though the number of outlets in the system can be higher. Very reliable pump, it has a removable screen filter at the grease intake for eliminating dirt and impurities that could damage the pump, and a built in filter at the air inlet connection. Includes a height adjustable 2" NPTM bung adaptor.

Efficient and reliable—minimum maintenance.

| PM35 Bare Pump Models | |
|-----------------------|-------------------|
| Part # | Description |
| F530631 | 35 lb. Pail Pump |
| F530621 | 120 lb. Drum Pump |
| F530611 | 400 lb. Drum Pump |

PM35 Technical Data

| | |
|----------------------------------|-------------------------------------|
| Max. air pressure | 145 psi (10 bar) |
| Min. air pressure | 20 psi (1.5 bar) |
| Avg. air consumption* | 15.9 scfm (450 NL/min.) |
| Max. delivery** | 1.1lb./min. or 36cu.in.(540cc/Min.) |
| Max. pressure output(140psi air) | 8,700 psi (600 bar) |
| Air motor diameter | 3-1/8" (80 mm) |
| Suction strain dia.(pump foot) | 1.4" (35 mm) |
| Air inlet thread | 3/8"NPT(F) |
| Pump outlet thread | 3/8"NPT(F) |
| Bung adapter thread | 2" (M) |

*Maximum air consumption with 70 psi (5 bar) air inlet pressure, NLGI-2 grease at 68 °F (20 °C) and 110 cpm.

** 80cu.in.(1310cc/min) maximum free delivery at 80cpm NLGI-2 grease.

60:1 PM35 Grease Service Packages

| | |
|--------------------------------|---|
| Model F336 | For 120 lb. open top drum. |
| Includes the following: | |
| Model F530621 | 60:1 Ratio pump with cover mounting adapter |
| Model F1936 | Drum cover for 120 lb. drum. |
| Model F964 | Follower Plate for 120 lb. drum |
| Model F901 | Connecting hose installation hook-up kit. |
| Model F338 | For 400 lb. open top drum. |
| Includes the following: | |
| Model F530611 | 60:1 Ratio pump with cover mounting adapter |
| Model F1938 | Drum cover for 400 lb. drum. |
| Model F966 | Follower Plate for 400 lb. drum. |
| Model F901 | Connecting hose installation hook-up kit. |



Model F338

NOTE: Two-Year Warranty Standard on Above Pumps. Standard 2" Bung Bushing Supplied with Above pumps

Heavy Duty High Pressure Grease Pump Carts



Model F402211



Model F402201

60:1 PM35 Grease Cart Packages - 35 lb Pails

| PART NO. | F402201 | F402211 |
|----------------------------------|----------------------|----------------------|
| PUMPMaster 35 - 60:1 PUMP | F530631 | F530631 |
| PAIL COVER | F1934 | F1934 |
| FOLLOWER PLATE | F962 | F962 |
| DELIVERY HOSE | 15' x 1/4" (F873000) | 15' x 1/4" (F873000) |
| GREASE HANDLE | F413077 | F413077 |
| GREASE HANDLE SWIVEL | Z-swivel (F1105) | Z-swivel (F1105) |
| 3/8" QUICK AIR COUPLER | F930F06 | F930F06 |
| 3/8" QUICK AIR NIPPLE | F933M06 | F933M06 |
| 3/8" MINI FILTER REGULATOR COMBO | F957 | F957 |
| 3/8" PUMP TO FR COMBO CONNECTOR | F2052 | F2052 |
| PUMP TO HOSE BUSHING | F2060 | F2060 |
| CARRYING HANDLE | F2020 | F2020 |
| TWO WHEEL CART | - | F1301 |



Model F333231



Model F333211

60:1 PM35 Grease Cart Packages - 120 lb Kegs

| PART NO. | F333211 | F333231 |
|----------------------------------|----------------------|----------------------|
| PUMPMaster 35 - 60:1 PUMP | F530621 | F530621 |
| KEG COVER | F1936 | F1936 |
| FOLLOWER PLATE | F964 | F964 |
| DELIVERY HOSE | 15' x 1/4" (F873000) | 15' x 1/4" (F873000) |
| GREASE HANDLE | F413077 | F413077 |
| GREASE HANDLE SWIVEL | Z-swivel (F1105) | Z-swivel (F1105) |
| 3/8" QUICK AIR COUPLER | F930F06 | F930F06 |
| 3/8" QUICK AIR NIPPLE | F933M06 | F933M06 |
| 3/8" MINI FILTER REGULATOR COMBO | F957 | F957 |
| 3/8" PUMP TO FR COMBO CONNECTOR | F2052 | F2052 |
| PUMP TO HOSE BUSHING | F2060 | F2060 |
| TWO WHEEL CART | F1301 | - |
| FOUR WHEEL CART | - | F1303 |



Model F335261



Model F311001

60:1 PM35 Grease Cart Packages - 400 lb Drums

| CART PART NO. | F335251 | F335261 | F311001 |
|----------------------------------|----------------------|----------------------|--------------------|
| PUMPMaster 35 - 60:1 PUMP | F530611 | F530611 | F530611 |
| DRUM COVER | F1938 | F1938 | F1938 |
| FOLLOWER PLATE | F966 | F966 | F966 |
| DELIVERY HOSE | 15' x 1/4" (F873000) | 15' x 1/4" (F873000) | - |
| HOSE REEL | - | - | 30' x 1/4" (F1432) |
| GREASE HANDLE | F413077 | F413077 | F413077 |
| GREASE HANDLE SWIVEL | Z-swivel (F1105) | Z-swivel (F1105) | Z-swivel (F1105) |
| 3/8" QUICK AIR COUPLER | F930F06 | F930F06 | F930F06 |
| 3/8" QUICK AIR NIPPLE | F933M06 | F933M06 | F933M06 |
| 3/8" MINI FILTER REGULATOR COMBO | F957 | F957 | F957 |
| 3/8" PUMP TO FR COMBO CONNECTOR | F2052 | F2052 | F2052 |
| PUMP TO HOSE BUSHING | F2060 | F2060 | F2060 |
| X-FRAME DOLLY | F1306 | - | - |
| STANDARD DUTY PLATFORM TRUCK | - | F1307 | - |
| HEAVY DUTY PLATFORM TRUCK | - | - | F1305 |

Heavy Duty High Performance Grease Pumps

405 cu. in./min. (13.5 lb./min.)

4.5" Air motor (115mm) - 4" Stroke (100mm)



25:1 Ratio PM45 Heavy Duty Pressure Transfer Pumps - Grease

Moderate pressure, high delivery double acting pumps for transfer of grease up to NLGI-2. Also recommended for use with low viscosity grease in centralized grease systems that do not require a high pressure output and in large distribution systems of high viscosity oils.

Pumps are available with tube length to fit commercial 400 lb (185 kg) drums and they are available for flange cover mount to 400 lb (185 kg) open drums using a drum cover.

| PM45 Bare Pump Models | |
|-----------------------|-------------------|
| Part # | Description |
| F531211 | 400 lb. Drum Pump |

| PM45 Technical Data | |
|---|--|
| Max. air pressure | 200 psi (14 bar) |
| Min. air pressure | 20 psi (1.5 bar) |
| Avg. air consumption* | 47 scfm (1,340 NI/min.) |
| Max. continuous duty delivery** | 13.5lb./min. or 405cu.in.(6636cc/Min.) |
| Max. pressure output(140psi air) | 5,000 psi (350 bar) |
| Air motor diameter | 4-1/2" (115 mm) |
| Suction strain dia.(pump foot) | 2.0" (50 mm) |
| Air inlet thread | 1/2"NPT(F) |
| Pump outlet thread | 1/2"NPT(F) |
| Bung adapter thread | 2" (M) |
| *Maximum air consumption with 70 psi (5 bar) air inlet pressure, NLGI-0 grease at 68 °F (20 °C) and 80 cpm. | |
| ** 30lb./min.(14748cc/min.) maximum free delivery. | |

225 cu. in./min. (7.5 lb./min.)

4.5" Air motor (115mm) - 4" Stroke (100mm)



40:1 Ratio PM45 Heavy Duty High Flow Pumps - Grease

High flow double acting pumps with high pressure delivery for use in lubrication systems that require a combination of high flow and pressure delivery. Pumps can be used with grease up to NLGI-2 viscosity. These pumps can be used in medium length systems that include simultaneous operation outlets.

Pumps are available for cover mount to 120 lb (50 kg) and 400 lb (185 kg) open drums and for horizontal and side mount on grease totes, bags and tanks.

| PM45 Bare Pump Models | |
|-----------------------|-------------------|
| Part # | Description |
| F531411 | 400 lb. Drum Pump |
| F531421 | 120 lb. Drum Pump |
| F531431 | Bulk Tote |

| PM45 Technical Data | |
|---|---------------------------------------|
| Max. air pressure | 200 psi (14 bar) |
| Min. air pressure | 20 psi (1.5 bar) |
| Avg. air consumption* | 26.5 scfm (750 NI/min.) |
| Max. continuous duty delivery** | 7.5lb./min. or 225cu.in.(3687cc/Min.) |
| Max. pressure output(140psi air) | 8,000 psi (560 bar) |
| Air motor diameter | 4-1/2" (115 mm) |
| Suction strain dia.(pump foot) | 2.0" (50 mm) |
| Air inlet thread | 1/2"NPT(F) |
| Pump outlet thread | 1/2"NPT(F) |
| Bung adapter thread | 2" (M) |
| *Maximum air consumption with 70 psi (5 bar) air inlet pressure, NLGI-0 grease at 68 °F (20 °C) and 80 cpm. | |
| ** 22lb./min.(10815cc/min.) maximum free delivery. | |

NOTE: Two-Year Warranty Standard on Above Pumps. Standard 2" Bung Bushing Supplied with Above pumps

Heavy Duty High Performance Grease Pumps

135 cu. in./min. (4.5 lb./min.)

4.5" Air motor (115mm) - 4" Stroke (100mm)



70:1 Ratio PM45 Heavy Duty High Pressure Pumps - Grease

High pressure double acting pump for use in applications requiring extra pressure output cold temperatures or when low air pressure could limit pump performance. Pumps can be used with grease up to NLGI-2 viscosity. These pumps can be used in large distribution systems that include simultaneous operation outlets. Pumps are available for cover mount to 120 lb (50 kg) and 400 lb (185 kg) open drums and for horizontal and side mount on grease totes, bags and tanks.

| PM45 Bare Pump Models | |
|-----------------------|-------------------|
| Part # | Description |
| F531711 | 400 lb. Drum Pump |
| F531721 | 120 lb. Drum Pump |
| F531731 | Bulk Tote |

165 cu. in./min. (5.5 lb./min.)

6" Air motor (150mm) - 4" Stroke (100mm)



80:1 Ratio PM60 Heavy Duty High Performance Pumps - Grease

Very high pressure and high volume delivery double acting pump for use in applications that require extra pressure and volume output and where cold temperatures or low air pressure could limit pump performance. Pumps can be used with grease up to NLGI-2 viscosity. These pumps can be used in large distribution systems that include simultaneous operation outlets. Pumps are available for cover mount to 120 lb (50 kg) and 400 lb (185 kg) open drum and for side mount on grease totes.

| PM60 Bare Pump Models | |
|-----------------------|-------------------|
| Part # | Description |
| F532811 | 400 lb. Drum Pump |
| F532821 | 120 lb. Drum Pump |

PM45 Technical Data

| | |
|----------------------------------|---------------------------------------|
| Max. air pressure | 100 psi (7 bar) |
| Min. air pressure | 20 psi (1.5 bar) |
| Avg. air consumption* | 33 scfm (925 NI/min.) |
| Max. continuous duty delivery** | 4.5lb./min. or 135cu.in.(2212cc/Min.) |
| Max. pressure output(140psi air) | 7,000 psi (490 bar) |
| Air motor diameter | 4-1/2" (115 mm) |
| Suction strain dia.(pump foot) | 2.0" (50 mm) |
| Air inlet thread | 1/2"NPT(F) |
| Pump outlet thread | 1/2"NPT(F) |
| Bung adapter thread | 2" (M) |

*Maximum air consumption with 70 psi (5 bar) air inlet pressure, NLGI-0 grease at 68 °F (20 °C) and 80 cpm.
 ** 16.5lb./min.(8111cc/min.) maximum free delivery.

PM60 Technical Data

| | |
|----------------------------------|---------------------------------------|
| Max. air pressure | 100 psi (7 bar) |
| Min. air pressure | 20 psi (1.5 bar) |
| Avg. air consumption* | 35 scfm (1,000 NI/min.) |
| Max. continuous duty delivery** | 5.5lb./min. or 165cu.in.(2703cc/Min.) |
| Max. pressure output(140psi air) | 8,000 psi (560 bar) |
| Air motor diameter | 6" (150 mm) |
| Suction strain dia.(pump foot) | 2.0" (50 mm) |
| Air inlet thread | 1/2"NPT(F) |
| Pump outlet thread | 1/2"NPT(F) |
| Bung adapter thread | 2" (M) |

*Maximum air consumption with 70 psi (5 bar) air inlet pressure, NLGI-0 grease at 68 °F (20 °C) and 80 cpm.
 **17.6lb./min.(8652cc/min.) maximum free delivery.

80:1 PM60 Grease Service Packages

| | |
|--------------------------------|--|
| Model F534820 | For 120 lb. open top drum. |
| Includes the following: | |
| Model F532821 | 80:1 Ratio HD pump with cover mounting adapter |
| Model F418017 | Heavy Duty drum cover for 120 lb. drum. |
| Model F417011 | Heavy Duty Follower Plate for 120 lb. drum |
| Model F534103 | Connecting hose installation hook-up kit. |
| Model F534810 | For 400 lb. open top drum. |
| Includes the following: | |
| Model F532811 | 80:1 Ratio HD pump with cover mounting adapter |
| Model F418026 | Heavy Duty drum cover for 400 lb. drum. |
| Model F417009 | Heavy Duty Follower Plate for 400 lb. drum |
| Model F534103 | Connecting hose installation hook-up kit. |

NOTE: Two-Year Warranty Standard on Above Pumps. Standard 2" Bung Bushing Supplied with Above pumps

Heavy Duty High Performance Grease Pumps

990 cu. in./min. (33 lb./min.)

6" Air motor (150mm) - 4" Stroke (100mm)



12:1 Ratio PM60 Heavy Duty Volume Transfer Pump - Grease

Moderate pressure, very high volume double acting grease pump for use in transfer applications. These pumps can be used with all types of grease up to NLGI-2.

Pumps are available for horizontal mounting on grease totes and grease bags and they include an adaptor to fit a 3" cam-lock adaptor. They can be used with 400 lb (185 kg) drums when mounted to air pneumatic inductor

| PM60 Bare Pump Models | |
|-----------------------|-------------------------|
| Part # | Description |
| F532131 | Bulk Tote w/3" Cam-Lock |

| PM60 Technical Data | |
|----------------------------------|---------------------------------------|
| Max. air pressure | 100 psi (7 bar) |
| Min. air pressure | 20 psi (1.5 bar) |
| Avg. air consumption* | 39 scfm (1,100 NL/min.) |
| Max. continuous duty delivery** | 33lb./min. or 990cu.in.(16223cc/Min.) |
| Max. pressure output(140psi air) | 1,200 psi (84 bar) |
| Air motor diameter | 6" (150 mm) |
| Suction strain dia.(pump foot) | 2.3-4" (70 mm) |
| Air inlet thread | 1/2"NPT(F) |
| Pump outlet thread | 1"NPT(F) |
| Bung adapter thread | 2" (M) |

*Maximum air consumption with 70 psi (5 bar) air inlet pressure, NLGI-0 grease at 68 °F (20 °C) and 80 cpm.

** 88lb./min.(43261cc/min.) maximum free delivery.



Model F534721

Pump System with Pneumatic Inductor - 400 LB Drums - Grease

PM45 & PM60 grease pumps mounted onto an air operated inductor plate for use with high viscosity, hard to pump greases directly from 400 lb drum. When the double lip inductor plate is attached to the lower end of the pump tube, it exerts pneumatic, weight and atmospheric pressure on the material forcing pump priming. The inductor plate also serves as protection against contaminants and eliminates material waste. The inductor system includes guide rods, drum retaining mechanism and a control box with the following features:

- On/ Off control of the pump.
- Up / Down control of the ram for easy drum exchange.
- Two independent air pressure regulators, one for the pump and the other for the power ram cylinders.
- Pump / Ram independent air pressure gauge.
- Empty drum shut-off safety feature.
- Automatic Vacuum release.

| Inductor Package Models | |
|-------------------------|-----------------------------------|
| Part # | Description |
| F534421 | PM45 40:1 (Includes Pump F531421) |
| F534721 | PM45 70:1 (Includes Pump F531721) |
| F534121 | PM60 12:1 (Includes Pump F532130) |
| F534821 | PM60 80:1 (Includes Pump F532821) |

NOTE: Two-Year Warranty Standard on Above Pumps. Standard 2" Bung Bushing Supplied with Above pumps

Grease Pump Accessories



Drum Covers

Deluxe Drum Covers:

2" NPTF bung opening, allows mounting a PM3 or a PM3+3 pump to an open top 35 lb pail, 120 lb or a 400 lb drum.

Model F1934

Cover for 35 lb. pail, complete with mounting hardware

Model F1936

Cover for 120 lb. drum, complete with mounting hardware

Model F1938

Cover for 400 lb. drum, complete with mounting hardware

Heavy Duty Drum Covers:

Allows mounting a flange mounted PM45 or PM60 pump to an open top drum.

Model F418017

Cover for 120 lb. drum, complete with mounting hardware

Model F418026

Cover for 400 lb. drum, complete with mounting hardware

Model F360133

Converter for flange type drum cover. Converts flange mount to standard 2" NPTF bung opening, thus permits the use of bung mounted type pumps with Heavy Duty drum cover.



Bung Bushing Adaptors & Cam-Lock

Model F2028 Bung bushing adaptor for PM3 55:1 pressure ratio pumps.

Model F410002 Bung bushing adaptor for PM3+3 60:1 pressure ratio pumps.

Model F609104 Bung bushing adaptor for all PM45 grease pumps and for PM60 80:1 pressure ratio pump.

Model F753110 3" cam-lock adaptor. Allows mounting PM45 and PM60 to tanks, totes and fluid bags fitted with a standard 3" Cam-Lock connection.



Follower Plates

Follower Plates: For PM3 & 3+3 Pumps

Model F962

Follower Plate for 35 lb. pails

Model F964

Follower Plate for 120 lb. kegs

Model F966

Follower Plate for 400 lb. drums

Heavy Duty Follower Plates: For PM45 & PM60 Pumps.

Model F417011

Heavy Duty Follower Plate for 120 lb. kegs

Model F417009

Heavy Duty Follower Plate for 400 lb. drums

Installation Hook-up Kits

Model F903 High pressure connecting hose installation hook-up kit for PM3 55:1 ratio grease pumps. Includes:

Model F801 2' Air hose, 1/4"NPT (M) both ends

Model F930 Quick air coupler 1/4"NPT(F)

Model F931 Quick air nipple 1/4"NPT (M)

Model F871000 5' high pressure grease hose 1/4"NPT(M) both ends

Model F534103 High pressure connecting hose installation hook-up kit for PM45 & PM60 grease pumps. Includes:

Model F823 5' Air hose, 1/2"NPT (M) both ends

Model F935F08 Quick air coupler 1/2"NPT(F)

Model F936F08 Quick air nipple 1/2"NPT (M)

Model F884 5' high pressure grease hose 3/8"NPT(M) both ends

Model F1981 90° swivel 1/2"NPTF X 1/2"NPTM

Model F539009 Medium pressure connecting hose installation hook-up kit for PM60 12:1 ratio grease pumps. Includes:

Model F823 5' Air hose, 1/2"NPT (M) both ends

Model F935F08 Quick air coupler 1/2"NPT(F)

Model F936M08 Quick air nipple 1/2"NPT (M)

Model F863 5' medium pressure 1" hose 1"NPT(M) both ends

Model F1981 90° swivel 1/2"NPTF X 1/2"NPTM

Specialty pumps and accessories

7 G.P.M.

3.0"Stroke (75mm)



1:1 Ratio PM2 STAINLESS STEEL - Oil
3:1 Ratio PM4 STAINLESS STEEL - Oil

To pump any fluid compatible with AISI-316 stainless steel, PTFE (Teflon), and Viton. Air motor divorced from the pump to avoid fluid contamination inside the motor. Hi-tech, long stroke piston pumps for handling water-based fluids as well as other slightly corrosive fluids. Not for use with strong acids. Some fluids that can be handled: • Alcohol • Benzol • Trichloroethane • Toulene • Anti-freeze • Detergents • Brake Fluid • Xylene
 Pumps not suitable for DEF.

| PM2 & PM4 SS Bare Pump Models | |
|-------------------------------|------------------------|
| Part # | Description |
| F331120 | Universal Stub Pump SS |
| F333120 | Universal Stub Pump SS |

PM2 SS Technical Data

| | |
|----------------------|-------------------------|
| Max. air pressure | 145 psi (10 bar) |
| Min. air pressure | 20 psi (1.5 bar) |
| Avg. air consumption | 7 cfm |
| Max. delivery | 6.6gal/min. (25 l/Min.) |
| Max. pressure output | 140 psi (10 bar) |
| Air motor diameter | 2" (51 mm) |
| Air inlet thread | 1/4"NPT(F) |
| Pump outlet thread | 3/4"NPT(F) |
| Fluid inlet | 1"NPT(F) |
| Pump Mounting | Bung/Bracket |

PM4 SS Technical Data

| | |
|----------------------|-------------------------|
| Max. air pressure | 145 psi (10 bar) |
| Min. air pressure | 20 psi (1.5 bar) |
| Avg. air consumption | 10 cfm |
| Max. delivery | 6.6gal/min. (25 l/Min.) |
| Max. pressure output | 145 psi (10 bar) |
| Air motor diameter | 2-1/2" (60 mm) |
| Air inlet thread | 3/8"NPT(F) |
| Pump outlet thread | 3/4"NPT(F) |
| Fluid inlet | 1"NPT(F) |
| Pump Mounting | Bung/Bracket |

5.25 lb/min.

2.44" Air motor(61.9mm) - 1.63"Stroke (41mm)



26:1 Ratio PM26
High Pressure Pumps - Oil & Grease

These air operated drum pumps can dispense a wide range of lubricants from oil up to an NLGI #2 grease. Available for 120 lb and 400 lb drums.

Features:

- Double-toggle balances pressure on air valve trip mechanism to prevent binding or stalling.
- Corrosion-resistant chrome finish on piston rods alleviates packing wear.
- All steel construction.

| PM26 Bare Pump Models | |
|-----------------------|-------------------|
| Part # | Description |
| 39739 | 120 lb. Drum Pump |
| 39740 | 400 lb. Drum Pump |

PM26 Technical Data

| | |
|----------------------------------|---------------------------------------|
| Max. air pressure | 200 psi (14 bar) |
| Min. air pressure | 30 psi (2 bar) |
| Avg. air consumption | 7 cfm |
| Max. delivery | 5.25lb/min. or 157cu.in.(2572cc/Min.) |
| Max. pressure output(140psi air) | 5,200 psi (353 bar) |
| Air motor diameter | 2-7/16" (61.9 mm) |
| Air inlet thread | 1/4"NPT(F) |
| Pump outlet thread | 3/8"NPT(F) |
| Pump Mounting | Flange (Bung optional*) |

*NOTE: BUNG ADAPTER MUST BE ORDERED SEPARATELY.

PM26 Accessories

| Description | Part # |
|------------------------|-----------|
| Bung Adapter | ADA10121B |
| 120 lb. Drum Cover | 338371 |
| 400 lb. Drum Cover | 338163 |
| 120 lb. Follower Plate | 200225 |
| 400 lb. Follower Plate | 338911 |

Accessories

Air Regulator with Gauge



| | | | | |
|------|------|------|------|------|
| P.N. | F970 | F973 | F976 | F980 |
| SIZE | 1/4" | 3/8" | 1/2" | 3/4" |

Filters with Auto Drain



| | | | | |
|------|------|------|------|------|
| P.N. | F972 | F975 | F978 | F982 |
| SIZE | 1/4" | 3/8" | 1/2" | 3/4" |

Lubricators



| | | | | |
|------|------|------|------|------|
| P.N. | F971 | F974 | F977 | F981 |
| SIZE | 1/4" | 3/8" | 1/2" | 3/4" |

Filter/Regulator/Lubricator with Auto Drain



| | | | | |
|---------|------|------|------|------|
| P.N. | F983 | F984 | F985 | F986 |
| SIZE | 1/4" | 3/8" | 1/2" | 3/4" |
| BRACKET | F987 | F987 | F988 | F988 |

Filter/Regulator Combo Compact Units with Auto Drain



| | | | | |
|---------|------|------|------|------|
| P.N. | F956 | F957 | F958 | F952 |
| SIZE | 1/4" | 3/8" | 1/2" | 3/4" |
| BRACKET | F987 | F987 | F988 | F988 |

Mini Units & Mini Combo Units



| | | | |
|---------|---------------------|-----------------|-------------|
| P.N. | F991 | F992 | F993 |
| SIZE | 1/4" REG | 1/4" LUB | 1/4" FILTER |
| BRACKET | F996 | F996 | F996 |
| P.N. | F995 | F955 | |
| SIZE | 1/4" F.R.L. PACKAGE | 1/4" FILTER REG | |
| BRACKET | F996 | F996 | |

Drum Heater Insulated Blankets

Model 37506- Fits size 120 lb. drums (15 gal/57 liter)

Model 55286- Fits size 400 lb. drums (55 gal/208 liter)

General Description

Drum heater blankets protect products by maintaining desired temperature through an evenly heated area. Includes an adjustable thermostatic controller that allows setting and managing the material temperatures.

Technical Data

| | |
|-------------------------------------|---------------------|
| Approx Temp: 160°F+/-10°(71°C+/-5°) | Voltage: 120VAC |
| Model 37506 | Model 55286 |
| Wattage: 400(+/-5%) | Wattage: 960(+/-5%) |
| Amps: 3.33(+/-5%) | Amps: 8.00(+/-5%) |



Refer to the following documents for more info:
+ Datasheet #35745: Drum Heater Blankets



F2074



F2013

Shut Off Valves

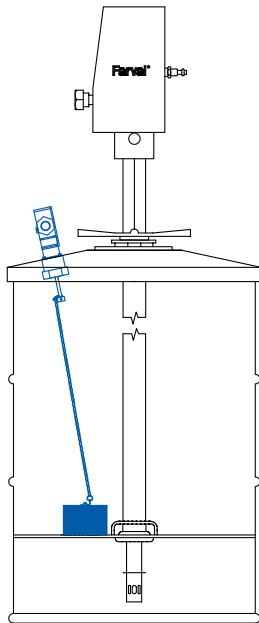
| High Pressure Needle Valves - 10,000 psi | | Medium Pressure Ball Valves - 2,000 psi | | Low Pressure Ball Valves - 600 psi | |
|--|----------|---|------------|------------------------------------|----------|
| F2077 | 1/2"NPTF | F2074 | 1/2"NPTF | F2013 | 1/4"NPTF |
| F2089 | 3/4"NPTF | F2083 | 3/4"NPTF | F2088 | 1/2"NPTF |
| F2093 | 1"NPTF | F2090 | 1"NPTF | F2091 | 3/4"NPTF |
| | | F2082 | 1-1/2"NPTF | F2084 | 1"NPTF |

Empty Containers

Containers Sizes Available:

| | |
|--------------------|---------------------------------|
| Model 37307 | 35 lb. plastic pail with handle |
| Model 37153 | 120 lb. /16 gallon steel drum |
| Model 36490 | 400 lb./55 gallon steel drum |

Accessories



NOTE:
Items in blue are included in kit.

Low Level Switch Kit for 120/400 lb. Drums

| P.N. | SIZE | RATING |
|----------------------------|---------|-------------|
| LC10243 | 120 lb. | NEMA 1 |
| LC11036 | 400 lb. | NEMA 1 |
| LC13689C | 120 lb. | NEMA 4X |
| LC13689C-1 | 400 lb. | NEMA 4X |
| 39406 | 120 lb. | NEMA 7/9 XP |
| 39406-1 | 400 lb. | NEMA 7/9 XP |

Kit includes all parts to install low level switch on a drum pump. For 120 lb. drums (15 gal/57 liter) & for 400 lb. drums (55 gal/208 liter)

Notes:

- (1) Requires cover and follower plate - order separately.
- (2) Customer/user to provide 15/16" hole in cover.
- (3) Can be used with any MFG pump.

Runaway Pump Protection Valve

Model 35647 - For 2" - 3-1/2" Air Motors

Model 35647-1 - For 4" - 6" Air Motors

This device is to terminate operation of a reciprocating type air motor in the event of a ruptured outlet hose or the pump runs out of media.

For compressed air use only.

Operating Pressure Range.....20 - 175 p.s.i. (1.4 - 12 bar)

Temperature Range.....0° to 180° F (-18° to 82° C)



F391022

Pump Hoist

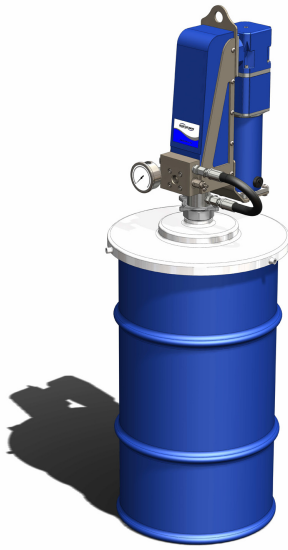
Model F391022

Designed to lift BDI pumps for drum changing. Lift unit consists of a steel tube that rises in a cast iron bearing under air pressure. Steel top beam has 360° swivel action at any height, and is adjustable in length. Can be used with other drum pumps by utilizing a strap.

Maximum height raised: 104"

Minimum height lowered: 64"

Electric Grease Barrel Pumps



120 lb. Electric Barrel Pump



400 lb. Electric Barrel Pump

Description

Bijur Delimon's AC or DC Electric Barrel Pumps will replace the air or hydraulic operated pumps now used for lubrication systems on mobile or stationary equipment. Installation is cleaner - no air or hydraulic lines to install/leak. Simply wire into the machines power supply. Pressure rated to 300 bar (4350 psi). Will fit original refinery 120 and 400 lb drums (50kg & 185kg). Optional drum covers and follower plates are available. (Bung Adapter F360002 is included with pumps.)

Operation

The pump end (bottom) consists of a hardened steel bushing, through which the piston runs. As the piston strokes down, grease is pushed past the check valve ball and out through the extruded discharge holes in the pump stem. As the piston strokes up, the check valve prevents drawback, and a vacuum is created inside the bushing. When the piston uncovers the suction holes in the bushing, another charge of grease is drawn in through the suction ports on the bottom of the stem and into the bushing. The cycle then repeats.

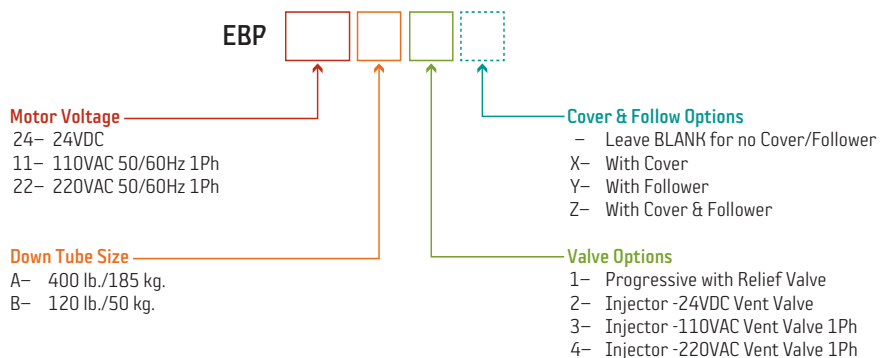
ELECTRIC BARREL PUMP SPECIFICATIONS

| | |
|---|---|
| Standard Tube Lengths/Fits Drum Size ¹ | 120 lb. (50 kg), 400 lb. (185 kg) |
| Voltages | 24 VDC 115/230 VAC (50/60 Hz) Single Phase |
| Amp Draw | 24VDC ² 15 Amp draw @ 3500psi 20°C (68°F) with NLGI #2 115VAC ³ 4 Amp draw @ 3500psi 20°C (68°F) with NLGI #2 220VAC ⁴ 2 Amp draw @ 3500psi 20°C (68°F) with NLGI #2 |
| Lubrication Flow ⁵ | 150cc/minute @ 140 bar, +20°C (9 cu.in. @ 2030 psi, +68°F) |
| Pump Pressure | 300 bar max/240 bar recommended (4350psi / 3480 psi) |
| Systems ⁶ | Progressive Pressure Relief Valve Included Injector Vent Valve & Pressure Relief Valve Included |
| Relief Valve Pressure | 240 bar / 3500 psi |
| Vent Valve Voltages | 24 VDC 115/230 VAC (50/60 Hz) Single Phase |
| Operating Temperature ⁷ | -25°C to +60°C (-13°F to +140°F) |
| Pressure Gauge | 350 bar Included (5000 psi) |
| Lube Outlet Port | 1/2" NPSF (F) |
| Lubricants ⁸ | NLGI #000 to #2 |
| Rating | IP66 |
| Noise Level ⁹ | 75dB |

¹ Bung Bushing F360002 is included with pumps.
² 16 Amp draw spike. Recommend 40A fuse max.
³ 5 Amp draw spike. Recommend 7A fuse max.
⁴ 2.5 Amp draw spike. Recommend 4A fuse max.
⁵ Flow rate is for 60 Hz motors. 60 Hz motor can operate on 50 Hz but pump flow is reduced.
⁶ Suitable for Dualine system when paired with a hydraulic or electric reversing valve.
⁷ Lower temperatures may be possible with suitable grease and/or heated reservoir/piping.
⁸ EBP will also work pumping oils.
⁹ Noise level measured at 3' (1 m) from the pump.

Refer to the following documents for more info:
 + Datasheet #36922: Electric Barrel Pump

How to Order



NOTE: Lube containers sold separate. (see page 18)

Manual pumps and accessories

Manual grease fill pump kits

- Model 37303** Manual Grease Fill Pump Kit (120 lb. drum)
- Model 37304** Manual Grease Fill Pump Kit (35 lb. pail)

Use to fill grease reservoirs & grease guns quickly and efficiently. Product mounts directly to original 120 lb. drum & 35 lb. pail.

Included Items: Cover, Follower Plate, Loader Extension, Loader Coupler. Also included is 6 foot hose with all fittings required to attach to pump and two fill couplers supplied for grease reservoirs - one female quick coupler for hydraulic stud (used on Aeroflow/BL3/Dynamis-Dynamis Maxx/TTN reservoirs), one for standard fill stud (used on Multiport/CS2000 and TP type reservoirs).

Develops 500 psi Delivery: 1 lb. per 6 strokes.



Model 37303

Heavy duty original container units

- Model F1984**

Heavy duty hand operated high pressure (5,000 psi) grease pump unit. Fits 35 lb. pail. Complete with pump, cover, 5' hose, pipe with coupler, carry handle and follower plate. Capacity per stroke: 0.06 ounces.



Model F1984



Model F1243

Transfer pumps

Heavy duty, high quality hand-operated transfer pumps. For light, medium and heavy automotive, petroleum and industrial products.

- Model F1243**

Has Viton® seals, useable with alcohols, degreasers, solvents, oils and anti-freeze. Long, curved removable steel spout with garden hose threads. Output is .45 liters per stroke.

Bucket pumps

Bucket pumps include a 35 lb leak proof, all steel oval shaped bucket with carrying handle and foot rest for easy handling and stability.

- Model F1996**

Multi pressure grease bucket pump. High pressure 6,000 psi lever action grease pump. Oval shaped 35 lb steel container with foot rest. Includes 7' grease hose and hydraulic coupler. Adjustable pressure and volume. Capacity per stroke: 0.04, 0.03, 0.02 pound (depending on the position of the lever).

- Model F1995**

3.6 gallon oil bucket pump for dispensing high viscosity lubricants. Includes a medium pressure lever action pump with a 5' rubber hose with shut off valve and 135° angled nozzle.



Model F1996



Model F1995

PORTABLE CARTS - Trucks • Dollies • Bases

- Model F1301**

2 wheel dolly - for 35, 50 and 120 lb. drum.

- Model F1302**

Band type dolly for 35 lb. pail.

- Model F1303**

4 wheel cart - for 120 lb. drums. Similar to F1301

- Model F1304**

Band type dolly for 120 lb. pail.

- Model F1306**

X-frame type dolly for 400 lb. drum.

- Model F1307**

Standard Duty platform truck for 400 lb drums.

- Model F1305**

Heavy duty 3 wheel platform truck for 55 gallon drum. Swivel wheel with locking brake. Will hold drum and hose reel.

- Model F1312**

Platform base for kegs.

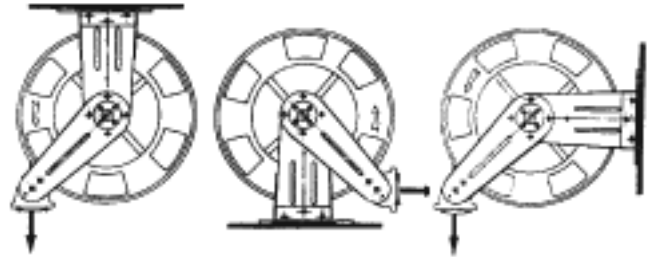


Hose Reels

Features that make the difference



Universal Installation



CM
Ceiling Mount

RF
Rear Floor

SR
Side Roller

Features

Double pedestal side supports and hose guide arms

- Reel is supported on both sides, gusset-reinforced pedestals and arms.
- The pedestal arms stay rigid—no bending, even when the hose is pulled at an angle.
- Less vibration, less bending—longer life.
- Hose is guided on both sides, without side to side bending—less wear and tear on both reel and hose.
- Guide arms are adjustable to any of three different mounting positions to provide the ideal configuration for wall, ceiling, floor, pit or truck mounting.

Heavy-duty construction

- Heavy gauge plate steel.
- Welded, with gussets, for additional strength and rigidity.

Hardened shaft and corrosive-proof swivel

- Extended leak-proof seal life.

Full flow porting

- Fully ported hub—no flow restrictions. Maximum fluid delivery for faster dispensing.

Permanently lubricated bearings

- Positive reel recoil every time.
- Reduced maintenance, less downtime.
- Prolongs reel life.

Compact narrow design

- The narrow design and easily rotated guide arm virtually solve all installation problems.
- Reels are shipped in the CM position and can be easily changed on site.
- Engineered to save installation space.

Heavy-duty latch mechanism

- Non sparking.
- Positive, audible hose position lock.

Trouble-free floating reel spring

- Enclosed spring.
- Complete canister can be removed and replaced.
- No accidental fly-back damage.

Conical hose stopper

- To avoid striking against other objects.

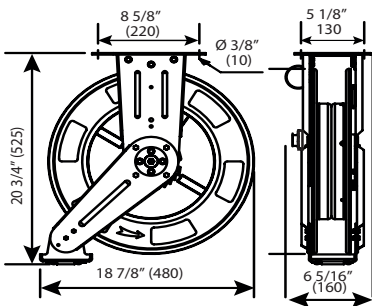
Sinterized powder coated

- High resistance against wear.

Parts and labor warranty

- Two-year warranty.

Standard Reels



Dimensions Inches (mm)

Standard Capacity 1400 Series

1400 Series heavy-duty, quality hose reel engineered to save space

Heavy-duty design

- The narrow design and easily rotated guide arm virtually solve all installation problems.
- Holds up to 40' of 1/2" Hose
- For 1/4", 3/8" and 1/2" I.D. Hose
- Swivel inlet: 1/2" NPT(F) Medium pressure ; 1/4" NPT(F) High pressure

Medium pressure - Oils, Fluids

1 - Wire braid hose (2000 psi)

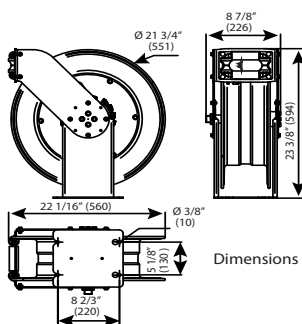
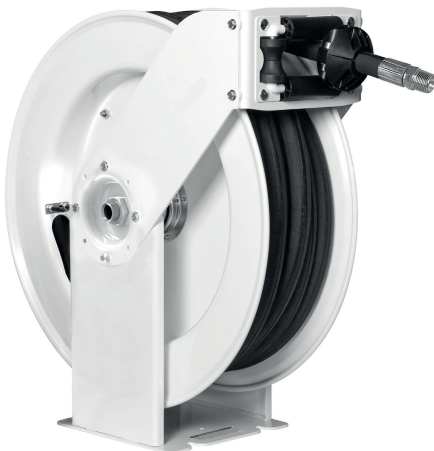
| | | | |
|--------------|--|------|------|
| F1428 | 30' | 1/2" | F851 |
| F1426 | 40' | 1/2" | F853 |
| F1402 | Reel only with swivel (3000 psi) - no hose | | |

High pressure - Grease

2 - Wire braid hose (5000 psi)

| | | | |
|--------------|--|------|------|
| F1432 | 30' | 1/4" | F876 |
| F1435 | 50' | 1/4" | F878 |
| F1403 | Reel only with swivel (8000 psi) - no hose | | |

*Reels include inlet swivel, models with hose include hose stop. See page 22 for inlet connecting hoses.



Dimensions Inches (mm)

Heavy duty 505 Double Pedestal Hose Reel

- Very tough construction able to stand regular use and abuse in Intensive Duty applications.
- Fatigue resistant steel spring for years of durable performance
- Spool mounted on two permanently lubricated and sealed ball bearings to reduce torque load on spring for smooth retraction and longer life.
- Large effective radial latching area for easier operation.
- Hose guide arm can be placed in different positions to accommodate any method of mounting.
- Narrow footprint allows mounting more reels on the same surface.

Lubricants

| | | | | | |
|----------------|---------------------------------|------|-----------|----------|----------|
| F505221 | 50' | 3/4" | 3/4" I.D. | 1/4 NPTM | 1250 psi |
| F505002 | Reel only with swivel - no hose | | | | |

High Pressure Grease & Hydraulic Fluid

| | | | | | |
|----------------|---------------------------------|------|-----------|----------|----------|
| F505330 | 75' | 3/8" | 3/8" I.D. | 3/8 NPTM | 4000 psi |
| F505014 | Reel only with swivel - no hose | | | | |

Reel includes inlet swivel, reel with hose includes hose stop. Inlet connecting hose: not included. See page 22.

Heavy-duty Large Capacity Reels

Heavy-duty 504 Series

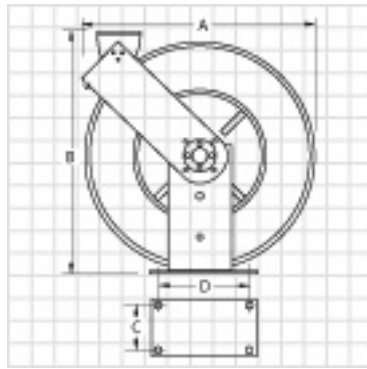
Extra heavy-duty design 504 series*

- Welded base and dual side support construction.
- Heavier, thicker gauge steel. 50% heavier than our standard capacity series reels.
- Dual adjustable outlet arms. Extra strength tie bar construction.
- Heavy-duty roller outlet. Assembled with 3 plates of steel.
- Easy to mount. Same bolt hole pattern as our standard capacity series reels.

Holds up to 50' of 1/2" I.D. Hose

For use with 1/4", 3/8" and 1/2" I.D. Hose

Swivel inlet: 1/2" NPT(F) Low pressure
 1/2" NPT(F) Medium pressure
 1/4" NPT(F) High pressure



A: 21-1/2" (542mm)

B: 21-7/16" (545mm)

C: 5-1/8" (130mm)

D: 8-2/3" (220mm)



Reel includes inlet swivel

Reel with hose includes hose stop and 30" inlet hose.

Low Pressure - Air, Water

| Reel Model | Hose Model | Length | Hose I.D. | psi | Hose Stop | Notes |
|------------|---------------------------------|--------|-----------|-----|-----------|-------------------|
| F504151 | F829 | 50' | 3/8" | 300 | F2024 | Complete Assembly |
| F504152 | F829 | 50' | 3/8" | 300 | F2024 | Complete Assembly |
| F504150 | F830 | 50' | 1/2" | 300 | F2026 | Complete Assembly |
| F504159 | Reel only with swivel - no hose | | | | | |

Medium Pressure - Oil, Fluids

| Reel Model | Hose Model | Length | Hose I.D. | psi | Hose Stop | Notes |
|------------|---------------------------------|--------|-----------|------|-----------|-------------------|
| F504251 | F854 | 40' | 1/2" | 2000 | F2026 | Complete Assembly |
| F504250 | F855 | 50' | 1/2" | 2000 | F2026 | Complete Assembly |
| F504259 | Reel only with swivel - no hose | | | | | |

High Pressure - Grease

| Reel Model | Hose Model | Length | Hose I.D. | psi | Hose Stop | Notes |
|------------|---------------------------------|--------|-----------|------|-----------|-------------------|
| F504350 | F892 | 50' | 1/4" | 5000 | F2024 | Complete Assembly |
| F504351 | F893 | 50' | 3/8" | 4000 | F2024 | Complete Assembly |
| F504359 | Reel only with swivel - no hose | | | | | |

*Reels include inlet swivel, models with hose include hose stop. See page 22 for inlet connecting hoses.

Reel Accessories & Control Valves

Hose Stops



| Model | For Hose I.D. |
|-------|---------------|
| F2022 | 1/4" |
| F2024 | 3/8" |
| F2026 | 1/2" |

Inlet Connecting Hoses

Inlet hoses are used between reel and permanent plumbing, especially where vibration is present. All inlet Hoses are 30" long.

| Model | Hose I.D. | Hose Ends | psi |
|-------|-----------|-----------|------|
| F822 | 1/2" | 1/2" NPT | 300 |
| F845 | 1/2" | 1/2" NPT | 2500 |
| F883 | 3/8" | 3/8" NPT | 4000 |

Swivels & outlets - high pressure



Model F1108



Model F1120



Model F1124

Model F1105

| Model | Type | Threads |
|-------|---|------------------------|
| F1104 | "Z" Inlet Swivel | 1/4" NPT x 1/2"-27M |
| F1105 | "Z" Inlet Swivel | 1/4" NPT x 1/4" NPT(F) |
| F1108 | Straight Swivel | 1/4" NPT X 1/2" NPT |
| F1109 | Straight Swivel | 1/4" NPT X 1/2" NPT |
| F1120 | Curved outlet pipe | 1/8" NPT |
| F1124 | H.D. 3 jaw hydraulic coupler (air power equipment only) | 1/8" NPT(F) |

Drum Tie Down Kits



| Model | Size |
|-------|-----------------------------------|
| F2440 | Secures 120 lb. Drum /16 Gal. Keg |
| F2450 | Secures 400 lb. Drum /55 Gal. Keg |

Pump, follower plate, drum cover and drum are not included.

Control Valves - Oil



Model F363114



Model F363116



Model F363118

| Model | Service | Inlet Thread | Outlet | Description |
|---------|---------|--------------|--------|-------------|
| F363118 | Oil/ATF | 1/2" NPT(F) | F1135 | Flex Hose |
| F363114 | | | F1126 | Outlet 90° |
| F363116 | | | F1139 | Outlet 60° |

Electronic Metered Control Valves - Oil



Model F365532



Model F365534



Model F365536

| Model | Service | Inlet Thread | Outlet | Description |
|---------|---------|--------------|---------|----------------------|
| F365532 | Oil/ATF | 1/2" BSP(F) | F369223 | Flex Hose |
| F365534 | | | F369227 | Flex Hose Outlet 90° |
| F365536 | | | F369231 | Rigid Outlet 60° |

In Line Meter with Digital Display

F366000

1/2" aluminum in line meter - 8 GPM

1/2" in line meter with aluminum measure chamber for use with oils, gear lube and water based solutions (antifreeze, windshield wash). Maximum working pressure: 1,450 psi. +/- 0.5 % accuracy. Works with two AAA 1.5 V alkaline batteries.



Model F366000

Control Valves & Grease Guns

High Pressure Grease Control Handles



Model F413077

Model F413080



| Model | Inlet | Swivel | Outlet | Coupler |
|---------|------------|--------|--------|---------|
| F413077 | 1/4"NPT(F) | No | F1120 | F1124 |
| F413080 | 1/4"NPT(F) | F1105 | F1120 | F1124 |



Model F1177



Model F411103

High Pressure Grease Meter

F1177 Heavy duty high pressure grease control handle with digital meter. Includes F1104 Z swivel 1/4" NPT(F), HP wire braid flex hose and HP grease coupler. Ergonomic design for comfortable and smooth operation.

F411103 Heavy duty high pressure digital display electronic grease meter. Measures in ounces. Easy to replace (2) AAA batteries. 1/8" FPT inlet and outlet. Flow rate is 36 oz./min. Max working pressure is 500 bar (7100 psi). Burst pressure is 1000 bar (14,200 psi).

Technical Information

| | |
|------------------------------------|------------------------------|
| Max. Working Pressure | 500 bar (7100 psi) |
| Min. Rupture Pressure | 1000 bar (14,200 psi) |
| Flow Rate | -> 1000 gr/min (36 oz./min.) |
| Accuracy (after field calibration) | + 2% |
| Battery duration | 1000h |
| Weight | 3 lbs. (1.4 kg) |

Lever Action Grease Guns

Model F1205



Universal grease guns to be used with 14 oz (400 g) grease cartridges or with bulk grease. Bulk grease loading by suction or using a filler pump. Maximum working pressure: 7,500 psi (500 bar).

| Model | Description |
|-------|---|
| F1200 | Standard duty grease gun complete with rigid pipe outlet and 3 jaw coupler; includes port for optional filler fitting. |
| F1205 | Heavy-Duty gun complete with rigid pipe outlet and 3 jaw coupler; also includes filler fitting and vinyl handle grip. |
| F1210 | Professional Series gun with variable stroke handle for use in heavy-duty constant use applications; also includes filler fitting, air bleeder valve, rigid pipe outlet with 3 jaw coupler, vinyl handle grip and removable valve checks. |

Professional Pistol-Grip Grease Guns

Model F1222



| Model | Description |
|-------|---|
| F1222 | Heavy duty high pressure cast iron head. Straight outlet pipe and coupler with ball check and hardened jaws. Removable valve checks for ease of maintenance. Air bleeder valve. Filler fitting for 3-way loading. Heavy duty barrel with large threads and rubber seal. Heavy duty rod, spring and follower. One hand action for hard to reach fittings. Metallic baked finish. Zinc plated handle and linkage. Vinyl handle grip. Capacity per stroke: 0.04 ounce. |

Air Operated Grease Guns

Model F1233



Model F1235



| Model | Description |
|-------|---|
| F1233 | PROFESSIONAL GUN SERIES - SINGLE SHOT Air operated, 60:1 pressure ratio grease gun. Uses standard 14 oz grease cartridges. Combination bleeder valve and filler fitting. 3-way loading. Heavy-Duty rod, spring and follower. Curved outlet pipe and coupler with ball check and hardened jaws. Heavy-Duty barrel with large threads and O-ring seal. Air connection: 1/4" NPTF. Trigger shots per oz delivered: 30. |
| F1235 | SPECIAL INDUSTRIAL SERIES - SINGLE SHOT. Air operated, 60:1 pressure ratio grease gun. Unique, exclusive air powered follower plate, ideal for heavy greases. Large 33 1/2 oz capacity heavy duty knurled barrel. Filler fitting for 2-way loading. Wire braid flex hose extension and coupler. Air connection: 1/4" NPTF. Trigger shots per oz delivered: 30. |



Whatever your automatic lube requirement...

We have the solution!



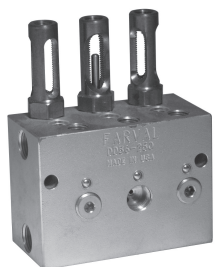
Series Progressive



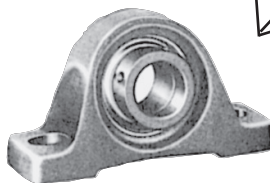
Injectors



Flowmeters



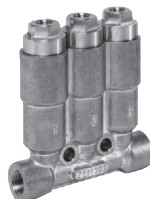
Dualine



Oil Recovery Unit



SureFire II-PDI



Refillable Single Point

Let 90+ Years Of Experience Design Your Next Lube System

BDI has been a manufacturer of automatic lubricating systems for over 90 years. We offer a complete line of pumps, valves, controllers, and accessories. Our pump line includes manual, air, electric, and hydraulic actuated models. Our valve offering is the most comprehensive in the industry. We manufacture oil and grease Dualine valves, series progressive modular valves, and injectors. We also offer air/oil mixing modules, oil flow meters, and single point lubricators.

Your local distributor:

BIJUR DELIMON INTERNATIONAL

2685 Airport Road • Kinston, NC 28504

Tel. 800-227-1063 • Fax: 252-527-9232

website: www.bijurdelimon.com



Adicionamos movimento ao seu negócio!

Serviços

Colagens no local
Serviço 24H
Cálculos de transmissão Formação
Projectos
Recondicionamento
Portal B2B
Visita técnica

Sede

R. António Silva Marinho, 66
4100-063 Porto | Portugal
Tel +351 226 197 360
Fax +351 226 197 361
vendasporto@juncor.pt

Filial - Montijo Comércio e Indústria

(Arm. 13/15)
EN 5 Pau Queimado - Afonseiro
2870-500 Montijo | Portugal
Tel +351 212 306 030
Fax +351 212 306 031
vendaslisboa@juncor.pt



www.juncor.pt



clientes.juncor.pt



facebook/juncor



twitter.com/juncor_sa



youtube.com/juncoraccess



linkedin.com/company/juncor-sa



pinterest.pt/juncorsa



instagram.com/juncor_sa