

HEROES OF SPILLAGE CONTROL

A NEW
MEMBER OF
THE TEAM



SUSTAINABILITY BY INNOVATION

SCHULTE STRATHAUS SOLUTIONS - CLEAN AND GREEN



"SOLUTIONS - CLEAN AND GREEN" WHAT DOES THIS ACTUALLY MEAN?

It is important to ensure the efficient and considerate use of limited resources. With our products and processes, we safeguard the increasingly important factor of sustainability. In the area of bulk material handling equipment, for example, we ensure optimized conveyor belt cleaning and material flow control.

CONSERVING RAW MATERIALS



WE STAND FOR:

- ◆ Optimum material flow planning for raw materials
- ◆ Modular set-up of machine and system components
- ◆ High operational safety
- ◆ Intelligent material flow planning
- ◆ Efficient use of materials

THIS IS MADE POSSIBLE BY
HEROES OF SPILLAGE CONTROL

STARCLEAN® SMART CONVEYING SOLUTIONS

OUR quality, OUR know-how
YOUR efficiency

Digital innovations for all
aspects of the conveyor belt

Spillage Control
Intelligent & efficient
material flow planning

Unique modular system
for every application

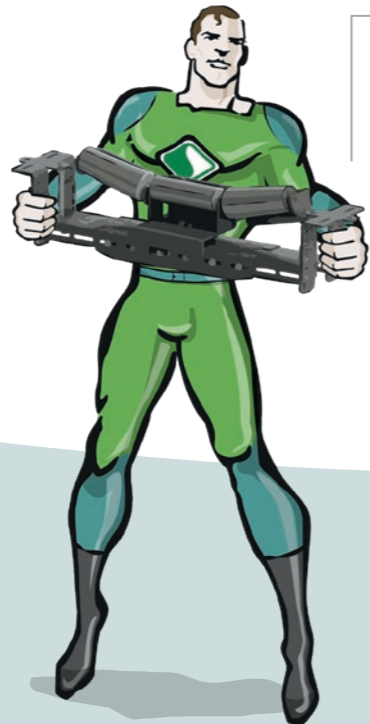
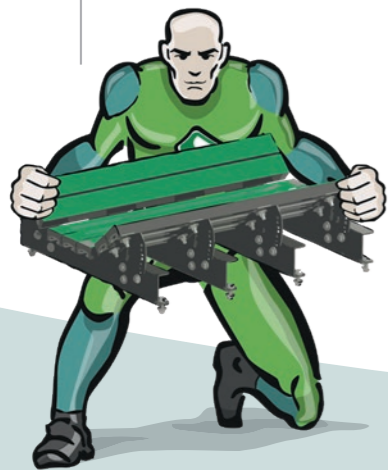
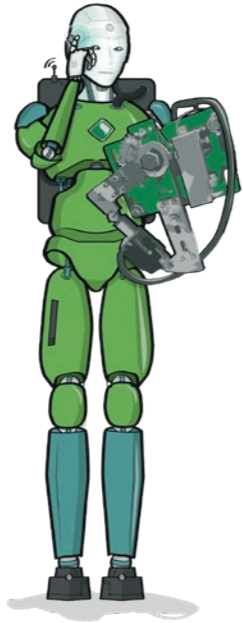
Innovative solutions
guarantee operational safety

Absolute reliability
Service hotline with on-site service

MEMBER OF SCHULTE STRATHAUS ♦ FAMILY-OWNED COMPANY SINCE 1952 ♦ MADE IN GERMANY

CONTENTS

STARCLEAN® PRODUCTS



P.08 CONVEYOR BELT CLEANER

NEW P.20 MODULAR PLOW SCRAPER

NEW P.22 STARCLEAN SMART SCRAPER

P.26 CLOSED BELT CONVEYOR (SAFEBELT®)

P.30 IMPACT BARS (FRIFLO)

P.32 BELT TRACKERS (CENTRAX)

P.34 TRANSFER POINT SEALS (SEAL / SPILL-EX / SEAL-TEK)

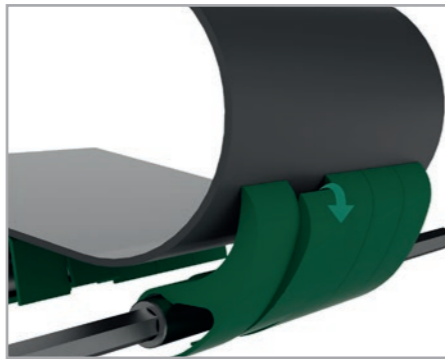
P.36 INSPECTION DOOR (ID)

STARCLEAN® CONVEYOR BELT CLEANER

ADVANTAGES AT A GLANCE

- ◆ Perfect, belt-saving cleaning
- ◆ Extremely long lifespan thanks to low wear
- ◆ Tool-less scraper blade replacement
- ◆ Quick and easy mounting and maintenance
- ◆ Optimum adjustment to the conveyor belt thanks to TWIST-SWING®
- ◆ Unique, modular system
- ◆ Top-quality materials: high-performance polyurethane or polyurethane base with special tungsten carbide blades

PRIMARY SCRAPER



SECONDARY SCRAPER



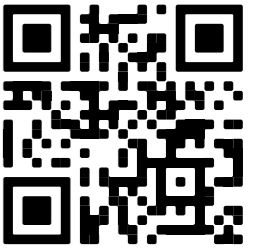
TWIST-SWING®

- ◆ Optimum adjustment of each scraper blade to the belt surface
- ◆ Ability to evade obstacles
- ◆ Flawless cleaning results



EFFICIENCY
+ SAFETY

PROFITABILITY!

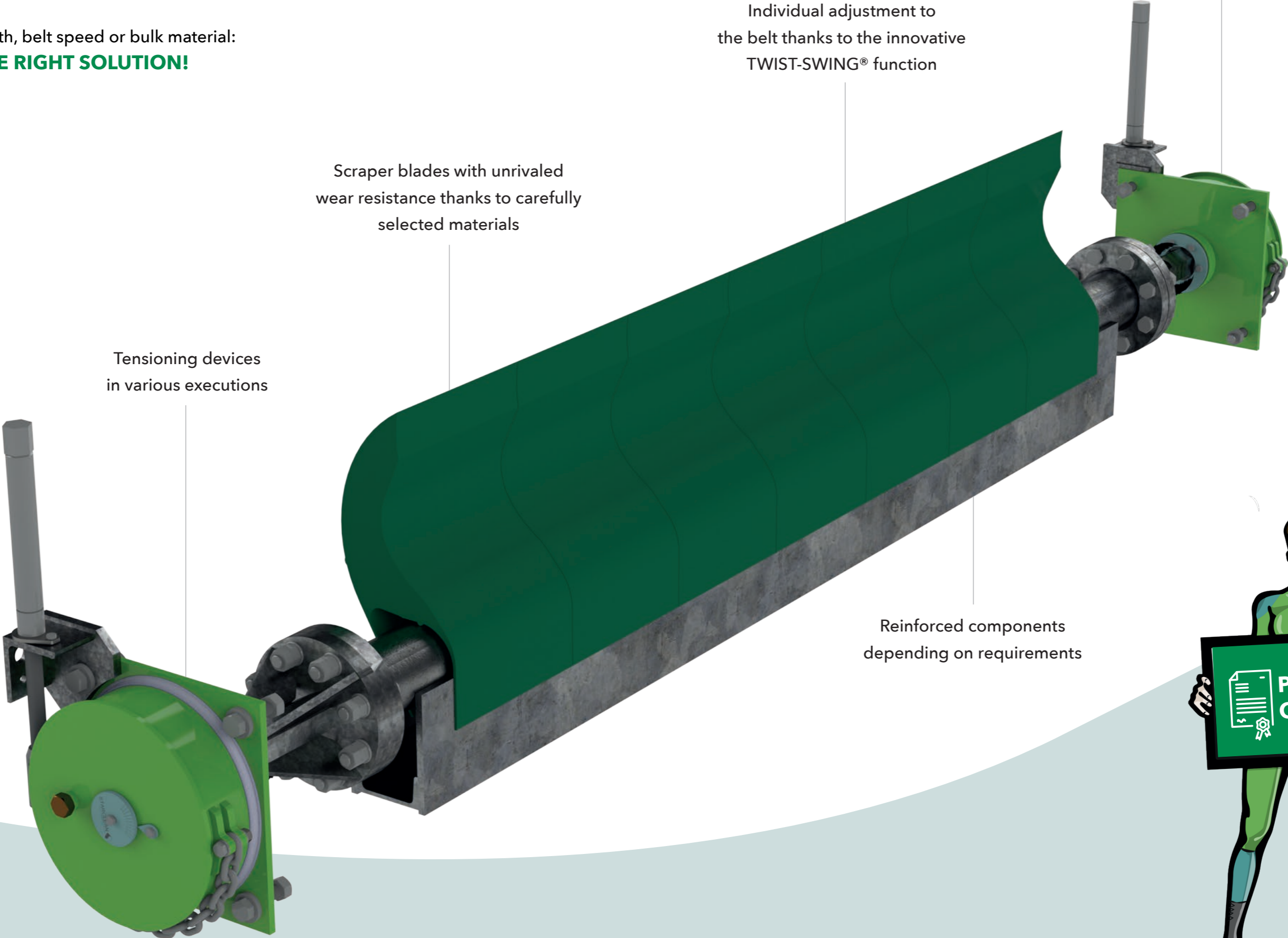


PRODUCT
VIDEO



STARCLEAN® CONVEYOR BELT CLEANER

For any belt width, belt speed or bulk material:
WE HAVE THE RIGHT SOLUTION!



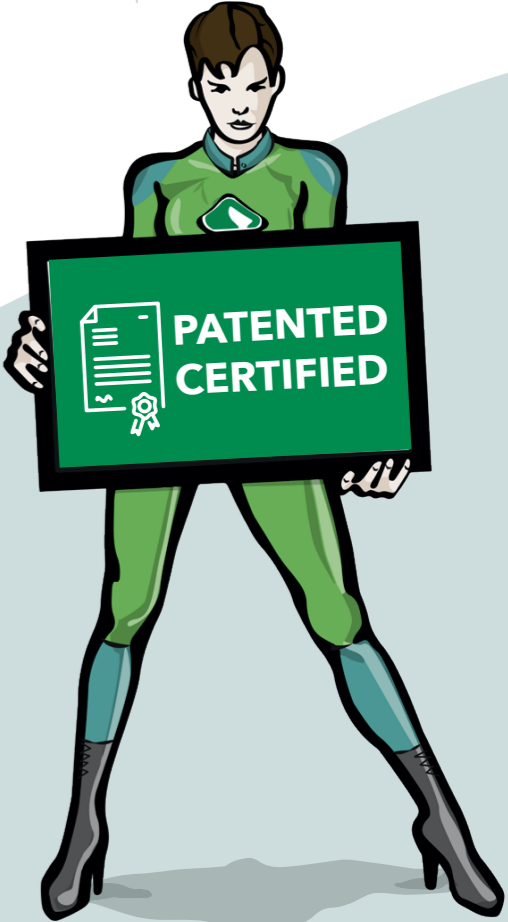
Tensioning device on both sides
for heavy-duty loads

Individual adjustment to
the belt thanks to the innovative
TWIST-SWING® function

Scraper blades with unrivaled
wear resistance thanks to carefully
selected materials

Tensioning devices
in various executions

Reinforced components
depending on requirements



STARCLEAN® THE MODULAR SYSTEM

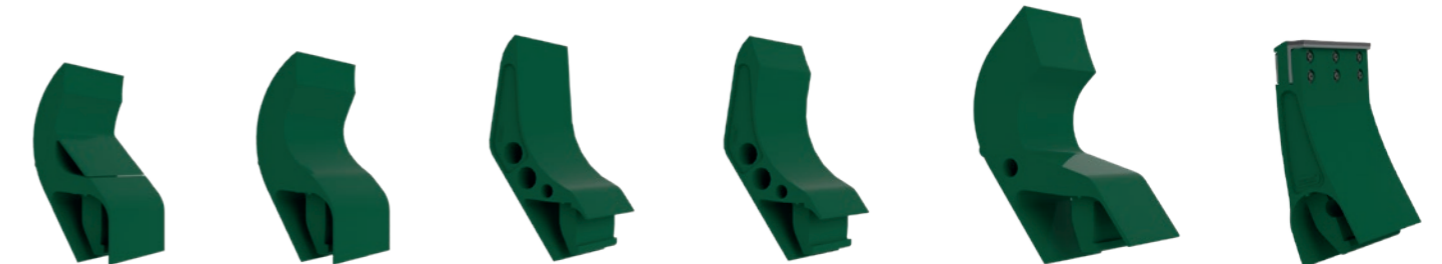
AVAILABLE IN: STANDARD QUALITY - ATEX QUALITY - SUITABLE FOR FOOD
- HEAT-RESISTANT - HYDROLYSIS STABILIZED

PRIMARY SCRAPER BLADES FOR USE AT THE PULLEY



Type 18n Type 81n Type 82n Type 281n Type 282n Type 283n Type 85n Type 86n Type 285n Type 285n (lang) Type 286n

PRIMARY SCRAPER BLADES FOR HEAVY-DUTY BELT CONVEYORS



Type 481n Type 481n-HD Type 581n Type 681n Type 781n Type 385n

SECONDARY SCRAPER BLADES FOR USE BELOW THE BELT



Type 50n Type 53h Type 53n Type 53Sn Type 54n Type 54Sn Type 55h Type 56n



Type 256n Type 66n Type 266n Type 08hm-110 Type 08hm-210 Type 09hm-110 Type 09hm-210

SPANNVORRICHTUNGEN

Raster-tensioning devices



Type 510 Type 520

Lever-type tensioning devices



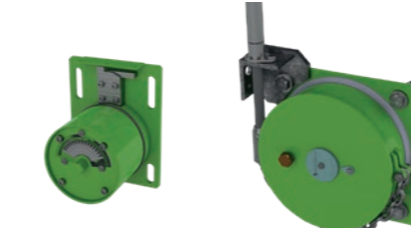
Type 430 Type 620

Spindle-type tensioning devices



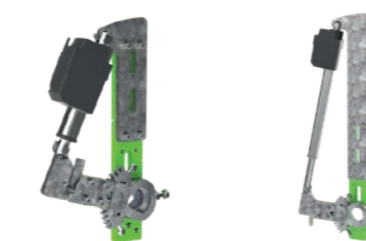
Type 960 Type 970

Torsion-tensioning devices



Type 720 Type 720-HD

Electric tensioning devices



Type 83E Type 83E-300

BLADE BASES



Type SKN

Type SKR

Type SK01

Type SK05

Type SKV

Type SK627

Type SK03

Type SK628

Type SKX

Type SK629

PRIMARY SCRAPERS

SERIES 700 WITH TORSION-TENSIONING DEVICE



WITH TUNGSTEN CARBIDE SCRAPER BLADES

Available types:

85, 285, 86 and 286

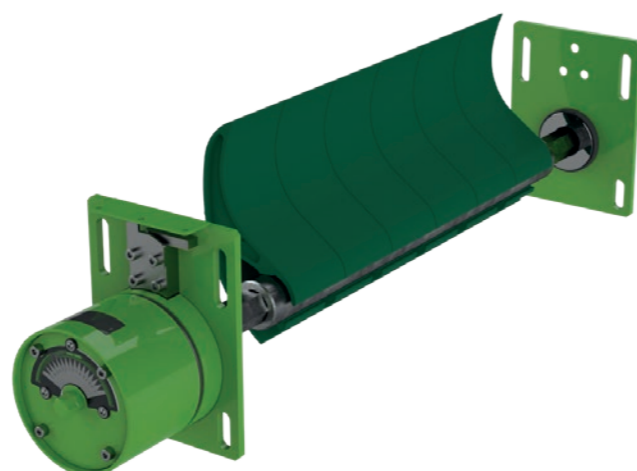
- ◆ Suitable for reversible operation

WITH POLYURETHANE SCRAPER BLADES

Available types:

18, 81, 82, 281, 282 and 283

- ◆ Suitable for reversible operation and mechanical belt joints



SERIES 800 WITH RASTER-TENSIONING DEVICE



WITH TUNGSTEN CARBIDE SCRAPER BLADES

Available types: 85, 285, 86 and 286

- ◆ Suitable for reversible operation
- ◆ Overlapping cleaning with types 85 and 285



SERIES 700 FOR HEAVY-DUTY BELT CONVEYORS WITH TORSION-TENSIONING DEVICE

WITH TUNGSTEN CARBIDE SCRAPER BLADES

Available types: 385

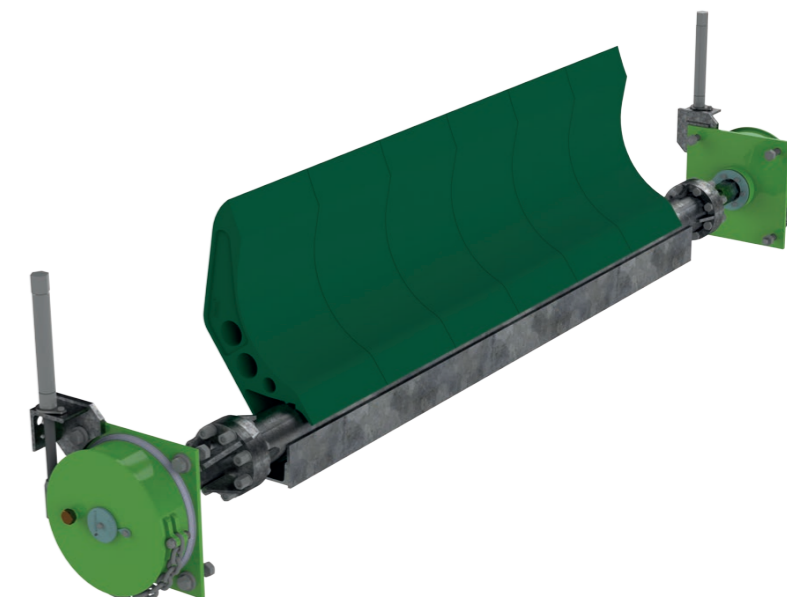
- ◆ Suitable for reversible operation

WITH POLYURETHANE SCRAPER BLADES

Available types:

481, 481-HD, 581, 681 and 781

- ◆ Suitable for reversible operation and mechanical belt joints



SERIES 600 FOR HEAVY-DUTY BELT CONVEYORS WITH LEVER-TYPE TENSIONING DEVICE

WITH TUNGSTEN CARBIDE SCRAPER BLADES

Available types: 385

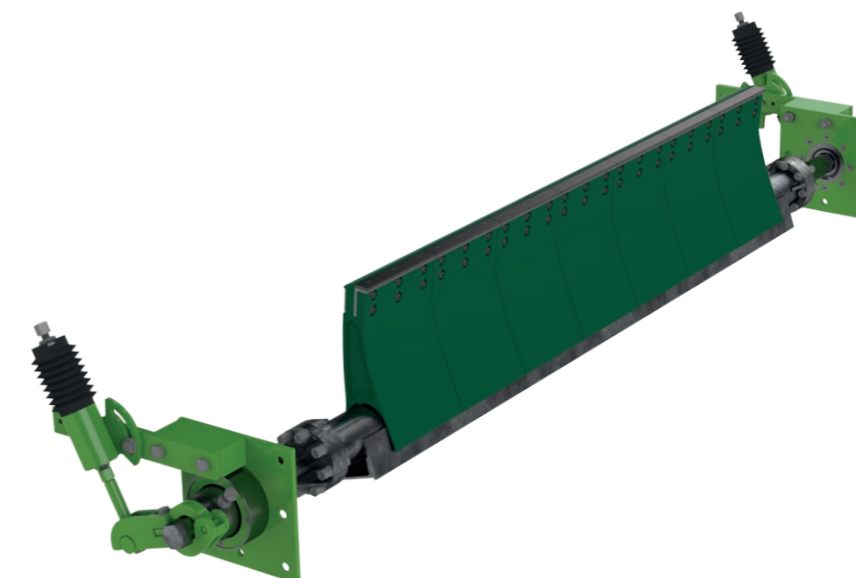
- ◆ Suitable for reversible operation

WITH POLYURETHANE SCRAPER BLADES

Available types:

481, 481-HD, 581, 681 and 781

- ◆ Suitable for reversible operation and mechanical belt joints



SECONDARY SCRAPERS

SERIES 800 WITH RASTER-TENSIONING DEVICE



WITH TUNGSTEN CARBIDE SCRAPER BLADES

Available types: 08, 09, 50, 53, 54, 56 and 256

- ◆ Overlapping cleaning with types 50, 53, 56 and 256
- ◆ Suitable for reversible operations type 09
- ◆ Suitable for mechanical belt joints type 50 and 54



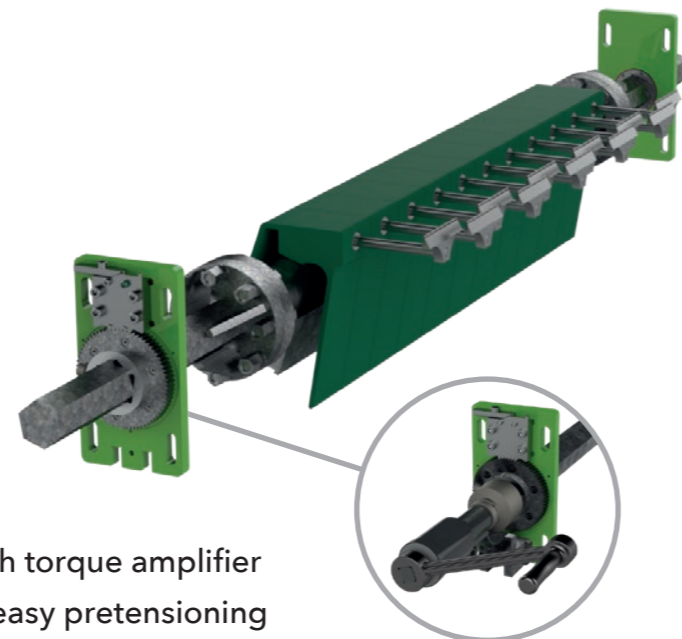
SERIES 800 FOR HEAVY-DUTY BELT CONVEYORS WITH RASTER-TENSIONING DEVICE



WITH TUNGSTEN CARBIDE SCRAPER BLADES

Available types: 66 and 266

- ◆ Overlapping cleaning



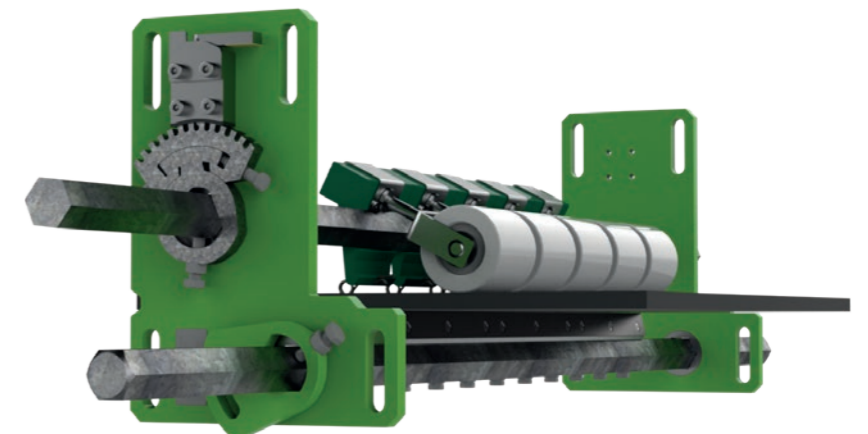
With torque amplifier for easy pretensioning

SERIES 500 WITH SEGMENTED PRESSURE ROLLER SYSTEM

WITH TUNGSTEN CARBIDE BLADE

Available types: 08 and 09

- ◆ Suitable for reversible operations
- ◆ For particularly abrasive, sticky materials
- ◆ With single-piece or two-piece tensioning device
- ◆ Belt-saving operation due to deflecting segmented rollers
- ◆ Optimum pressure of the belt against the carbide blade
- ◆ Version for heavy-duty belt conveyors also available



SCRAPER

NEXT-GENERATION SCRAPERS



SERIES 830-E WITH AUTOMATIC TENSIONING DEVICE



- ◆ Suitable for reversible operation
- ◆ Interval-based or load-based cleaning possible
- ◆ Electric linear drive unit (retrofitting possible)



WITH POLYURETHANE SCRAPER BLADES

- Available types: 18, 81, 82, 281, 282 and 283
- ◆ For primary scrapers



WITH TUNGSTEN CARBIDE SCRAPER BLADES

- Available types: 50, 53, 54, 56, 256, 08 and 09
- ◆ For secondary scrapers

SERIES 860-RS WITH RASTER-TENSIONING DEVICE

- ◆ Easy and quick maintenance outside of the transfer chute
- ◆ Convenient removal of each scraper blade from the side
- ◆ Reliable and safe scraper blade replacement without reaching into the system

WITH TUNGSTEN CARBIDE SCRAPER BLADES

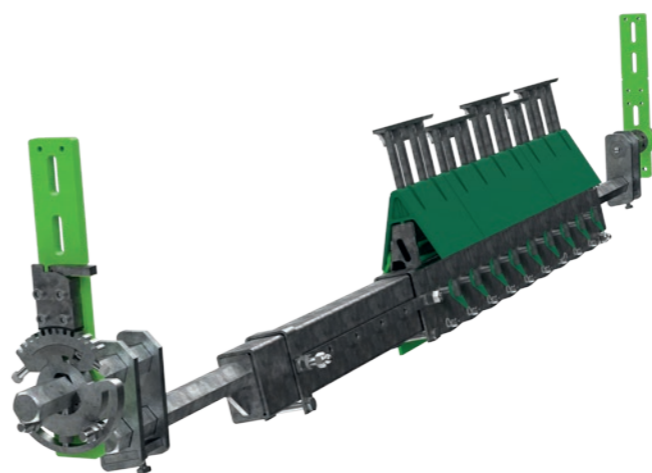
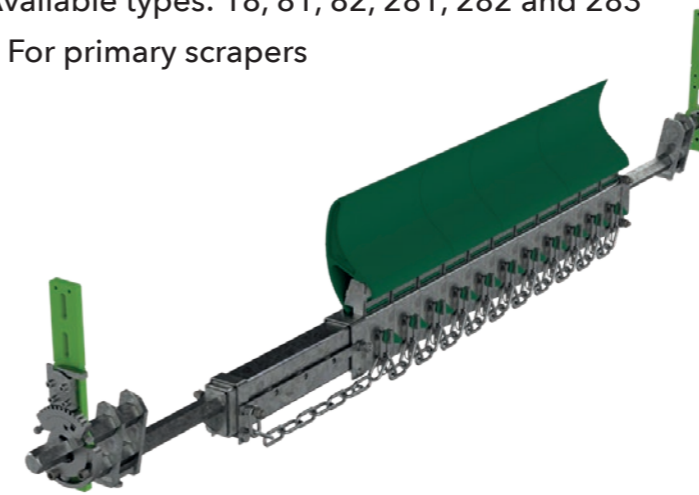
- Available types: 85, 285, 86 and 286
- ◆ For primary scrapers

WITH TUNGSTEN CARBIDE SCRAPER BLADES

- Available types: 50, 53, 54, 56 and 256
- ◆ For secondary scrapers

WITH POLYURETHANE SCRAPER BLADES

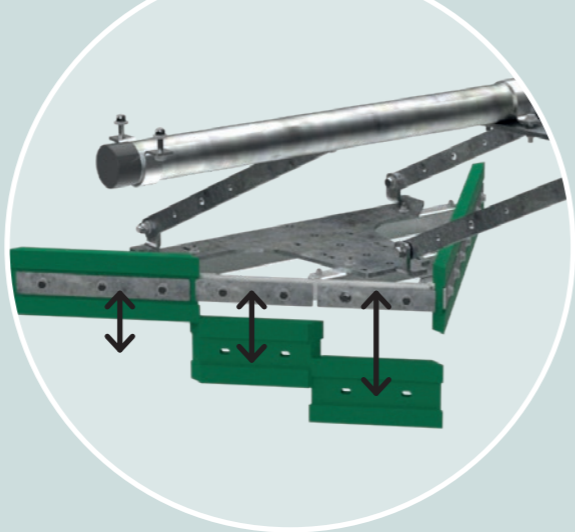
- Available types: 18, 81, 82, 281, 282 and 283
- ◆ For primary scrapers



INNER BELT SCRAPERS

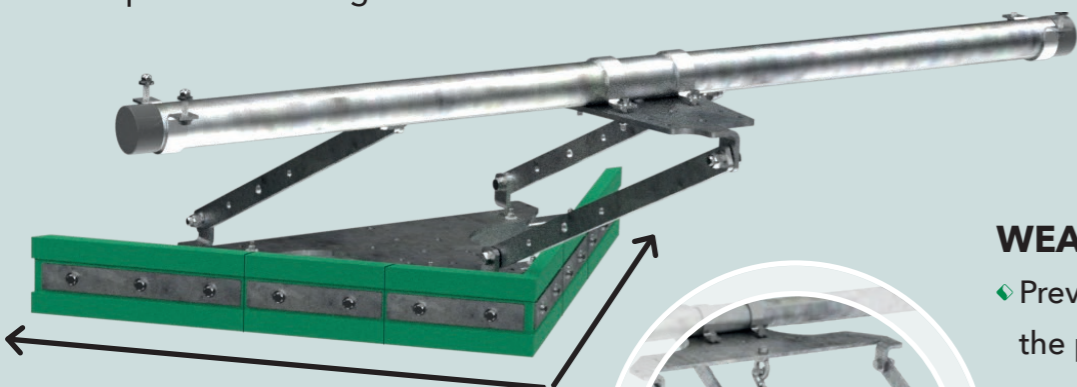
SERIES 200 FOR INNER BELT CLEANING

NEW



MODULAR PLOW SCRAPER

- ◆ Individual polyurethane blades
- ◆ Adjustable to every belt width thanks to the modular system
- ◆ Long lifespans
- ◆ Simplified mounting of the elements



WEAR LIMITER

- ◆ Prevents further lowering of the plow when the segments are completely worn out



WITH POLYURETHANE BLADE

Available types: 240 and 273

- ◆ Available as diagonal and plow scraper
- ◆ Prevents dirt and damage between pulley and belt

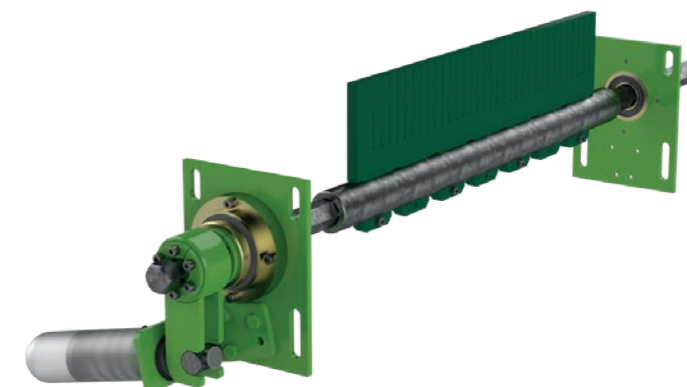
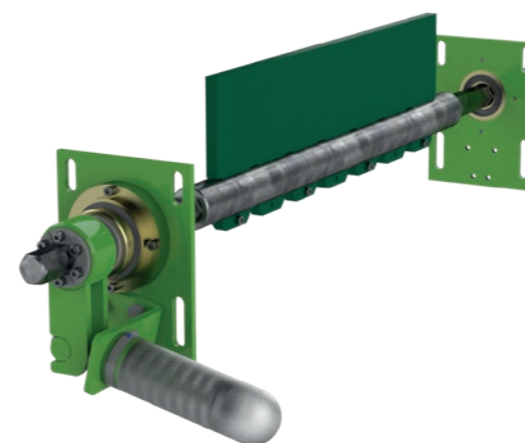
SPECIAL SOLUTIONS

SERIES 400 FOR CHEVRON CONVEYORS

WITH POLYURETHANE BLADE

Available types: 04 and 07

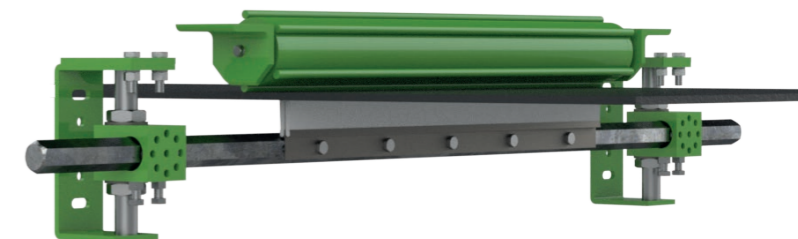
- ◆ Slotted or continuous
- ◆ For use on the return side of the belt



BRUSH CLEANER WITH BEATING DRUM

WITH FIXED BRUSH

- ◆ Poly bristles
- ◆ For use on the return side of the belt
- ◆ Alternatively with polyurethane blade





STARCLEAN®
SMART
SCRAPER

NEW

THE NEW DIGITAL STARCLEAN®S3

Our unique smart scraper with an electric drive, combined with our smart cloud dashboard, enables predictive maintenance of wear elements through preventive damage detection on the conveyor belt. This digital innovation gives the scraper the ability to self-regulate wear and tear while also ensuring a constant pretensioning force - completely automatically.

Designed according to the principle of **“detect - react - protect”**, our innovation enables continuous contact-based inspection of the conveyor belt, thus enabling predictive maintenance.

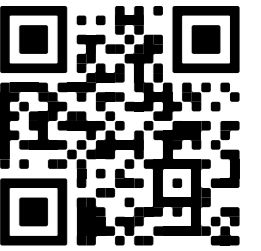
ADVANTAGES AT A GLANCE

- ◆ Continuous inspection
- ◆ Damage limitation
- ◆ Efficient use of resources
- ◆ Improved operating reliability
- ◆ Prevention of costly, unscheduled conveyor belt downtimes
- ◆ Transparency

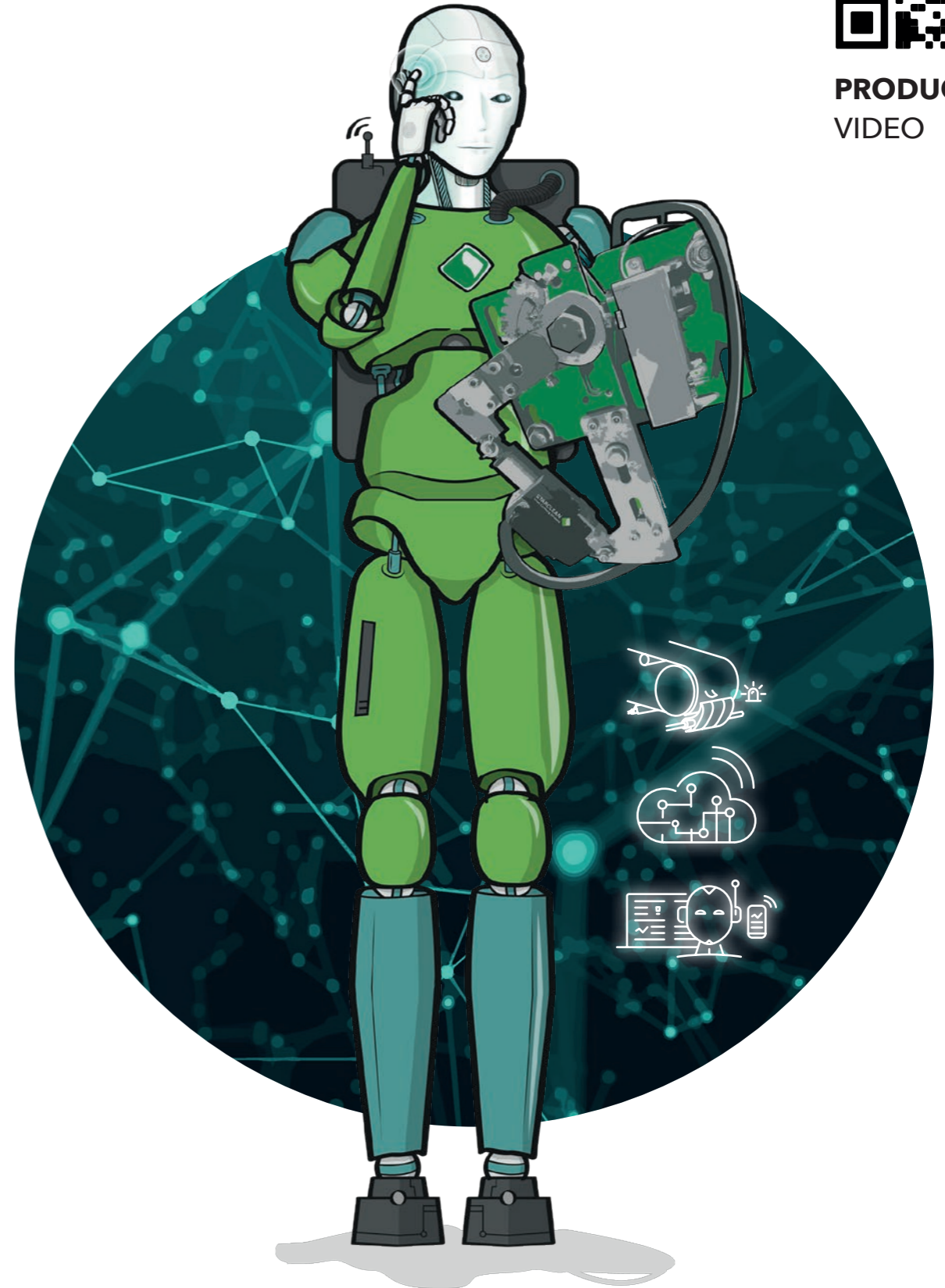
THE MODULES

- ◆ Scraper
- ◆ Motorization set
- ◆ Scraper Intelligence Module (SIM)
- ◆ Measuring roller with sensor system
- ◆ Belt damage detection
- ◆ LTE Edge Controller/Cloud

BELT DAMAGE DETECTION



PRODUCT
VIDEO



THE MODULES



Scrapper Intelligence Module (SIM)



Motorization set with S³ sensor system
Drive on one side and on both sides



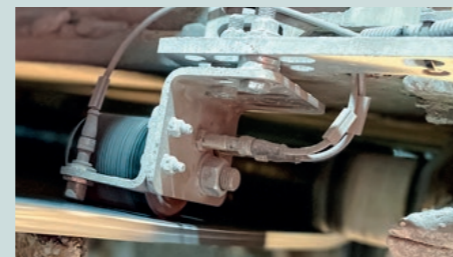
Scraper
Primary or secondary



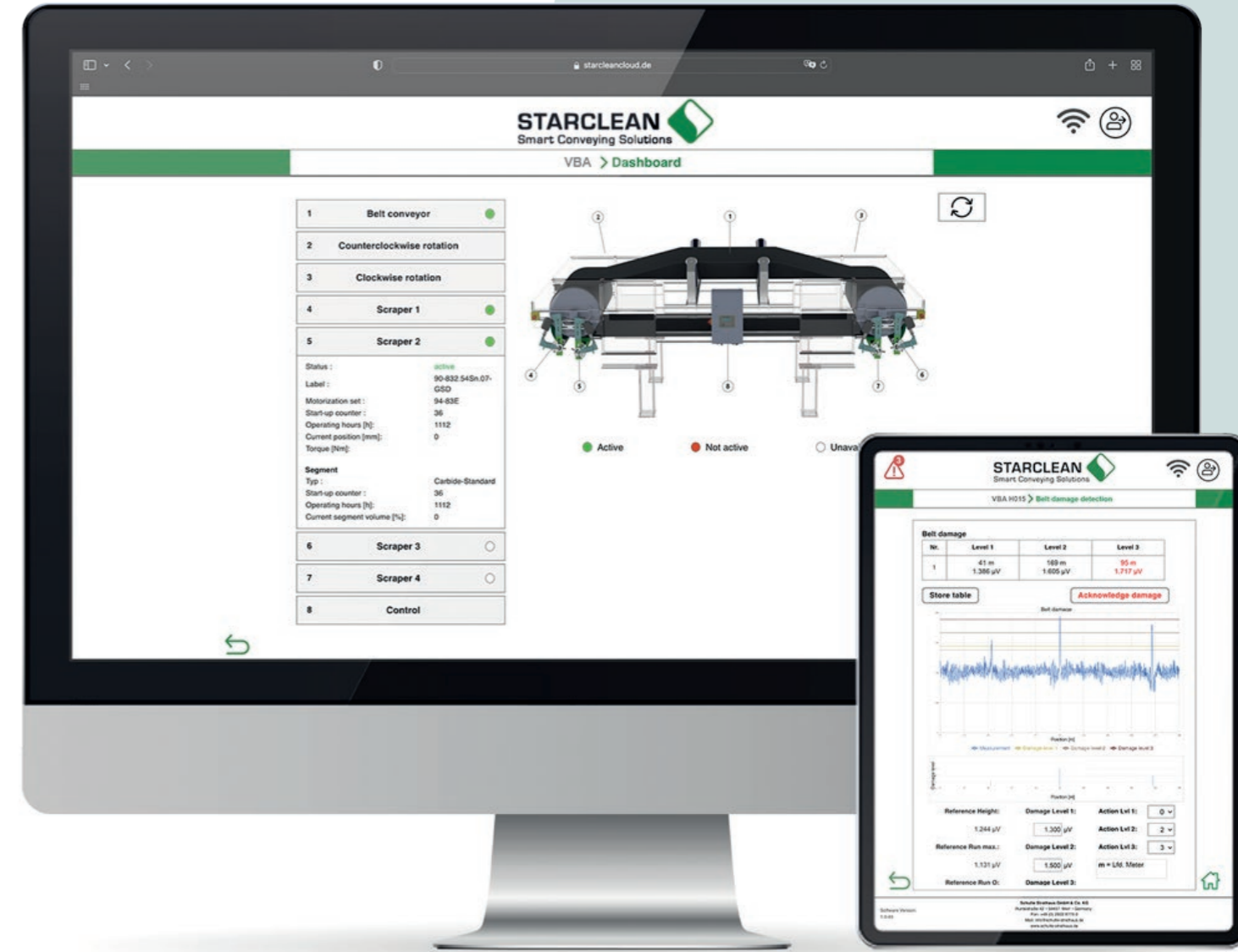
Measuring roller with sensor system

TECHNICAL APPLICATIONS

- ◆ Automatic or manual engagement and disengagement of conveyor belt cleaner
- ◆ Automatic readjustment of the pretension
- ◆ Wear indicator and warning for polyurethane scrapers
- ◆ Constant belt damage detection by the secondary scraper
- ◆ Operating hours display for belt conveyor, scraper, and wear parts
- ◆ Switch-on, engagement and disengagement counter
- ◆ Indicator of conveying speed and running direction
- ◆ Control for up to four scrapers
- ◆ RFID access with rights allocation to protect against unauthorized access
- ◆ Information about the belt conveyor, the scrapers, and the control system
- ◆ Error messages and faults



STARCLEAN® S³ DASHBOARD/CLOUD



WHAT THE CLOUD CAN DO

- ◆ Monitor the conveyor belt
- ◆ Classify the damage
- ◆ Define the internal damage level
- ◆ Initiate action if belt is damaged
(disengagement, send information, alarm, you determine the function)
- ◆ Detect the position of belt damage
- ◆ Record belt characteristics
- ◆ Smart, cloud-based dashboard

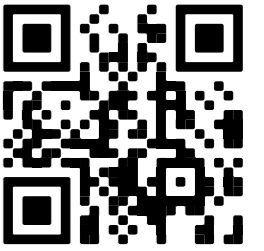
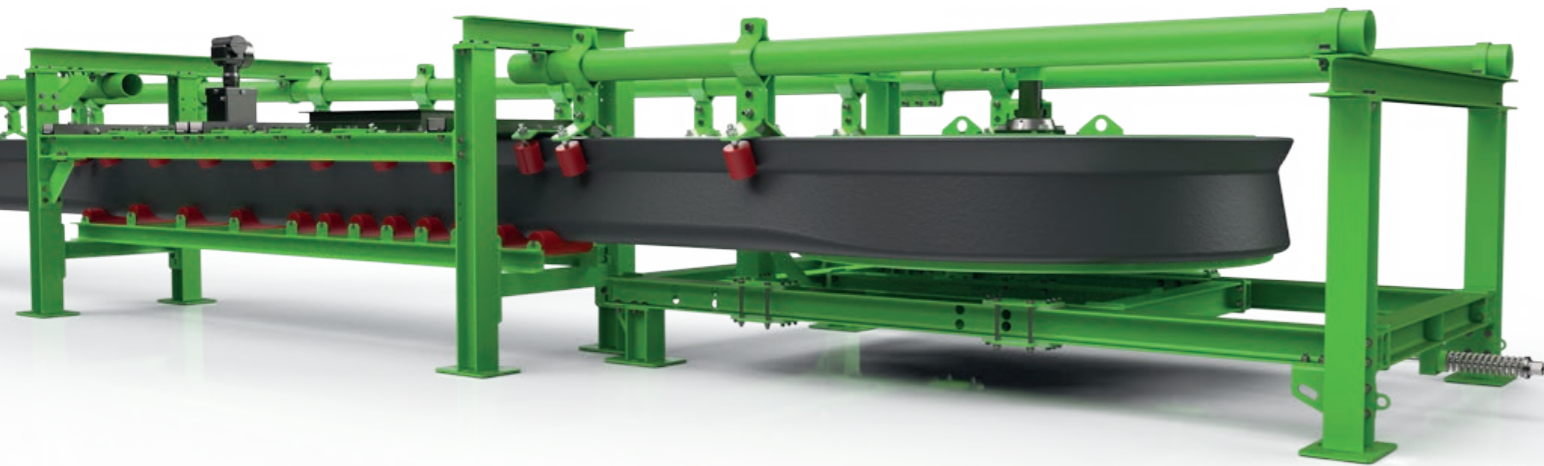
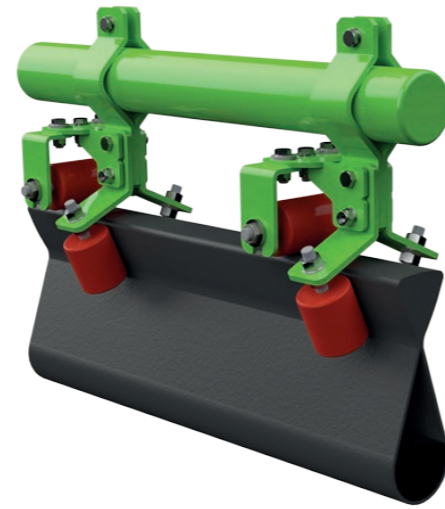
SAFEBELT® CLOSED BELT CONVEYOR

ADVANTAGES AT A GLANCE

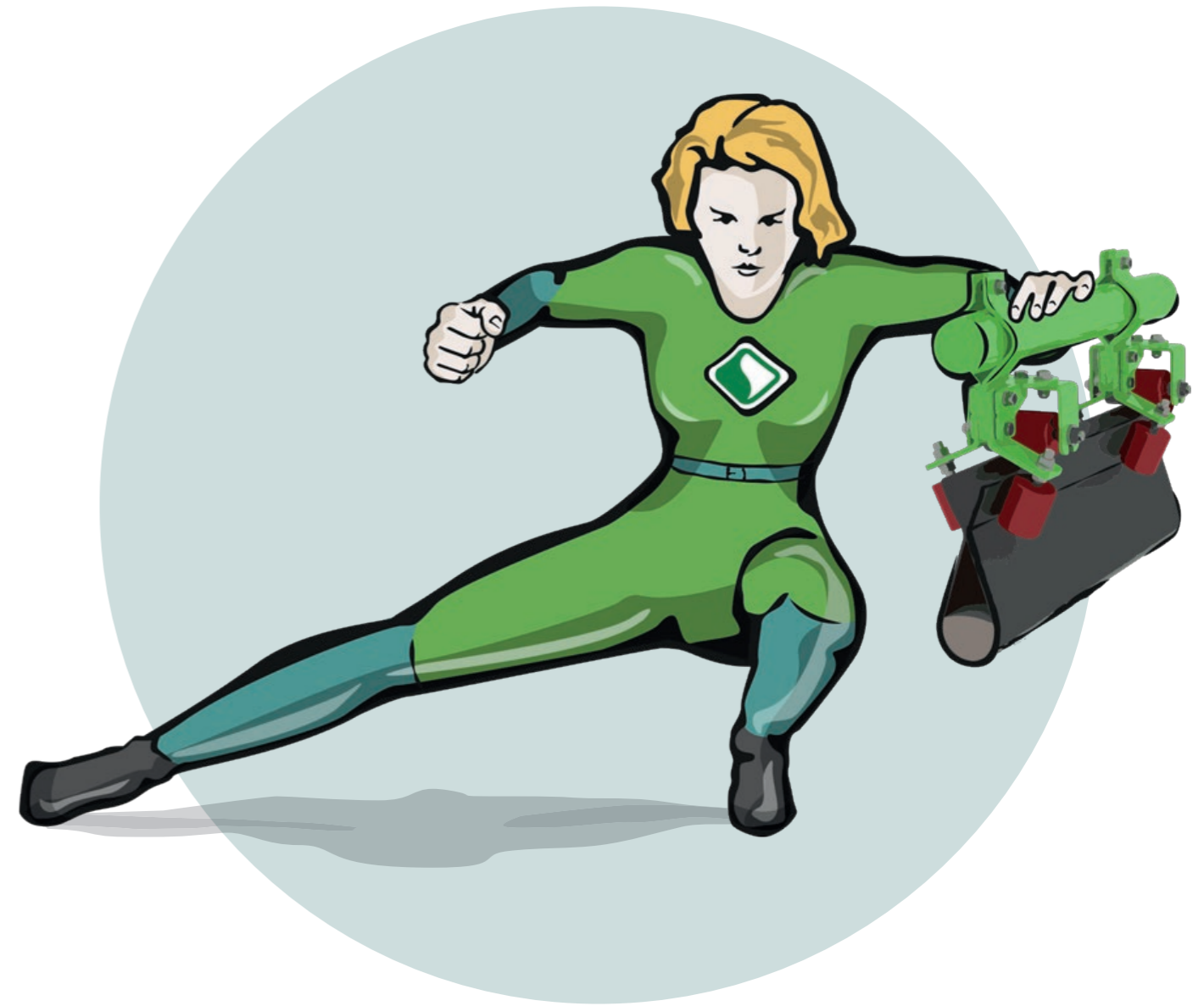
- ◆ Weatherproof and dust-free transport of bulk material
- ◆ Easy circumvention of obstacles
- ◆ Avoidance of several transfer points
- ◆ Small footprint thanks to tight curve radii
- ◆ Simplified installation planning
- ◆ Simple (subsequent) relocation of the complete system

AVAILABLE IN

- ◆ 800 mm belt width
- ◆ 1400 mm belt width



PRODUCT
VIDEO



SAFEBELT® CLOSED BELT CONVEYOR

DATA AND FACTS

- ◆ Maximum filling level: 60%
- ◆ Maximum material weight: 40 kg/m
- ◆ Maximum belt speed: 3 m/s
- ◆ Horizontal radii: > 8m
- ◆ Gradients: < 30°
- ◆ Heat-resistant up to 80°C
- ◆ Durability: friction, ozone, UV (optional: oil and grease)

SUITABLE FOR A WIDE VARIETY OF BULK MATERIALS ACROSS MANY DIFFERENT INDUSTRIES:

Construction industry: gypsum, lime, clay, sand, stone, cement

Energy industry: ash, turf, wood shavings, coal, recycling

Cellulose industry: wood shavings, waste paper, kaolin

Metal industry: foundry sand, ore, coal, slag

Mining/quarrying: ore, grinding balls, minerals, sand

Food industry: raw materials, fishmeal/food, cereals

Processing industry: chemicals, finished products, minerals, granulates, fertilizers

...AND LOTS MORE!

SEE WHAT MAKES SAFEBELT® SO SPECIAL:

IT CUTS COSTS

Eliminates expensive enclosures and cleaning work

ECO-FRIENDLY

Little or no ingress or emissions of dust or liquids

LOW-ODOR

Odors are largely contained in the conveyor belt

SPACE-SAVING

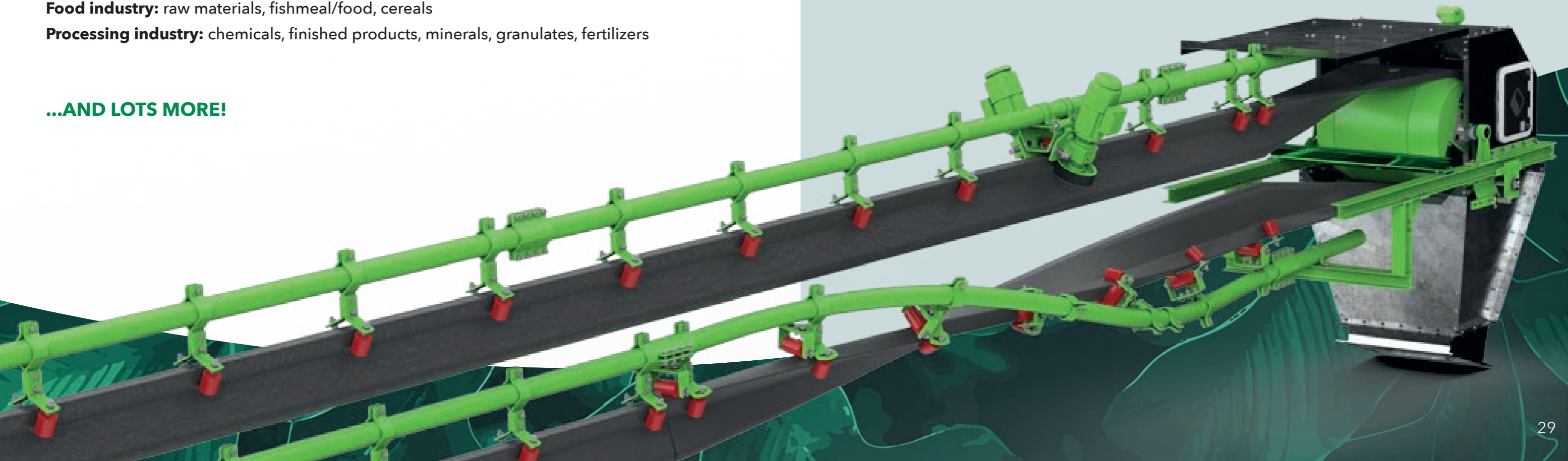
Can overcome steep uphill and downhill gradients as well as tight horizontal and vertical curve radii

LOW-MAINTENANCE

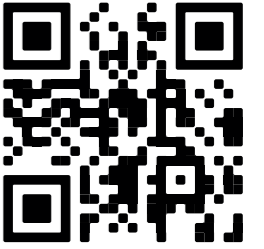
No deposits of material residues thanks to enclosed return flow

FLEXIBLE BELT GUIDANCE

Can also be used for additional conveyed material thanks to enclosed return flow



STARCLEAN® IMPACT BARS

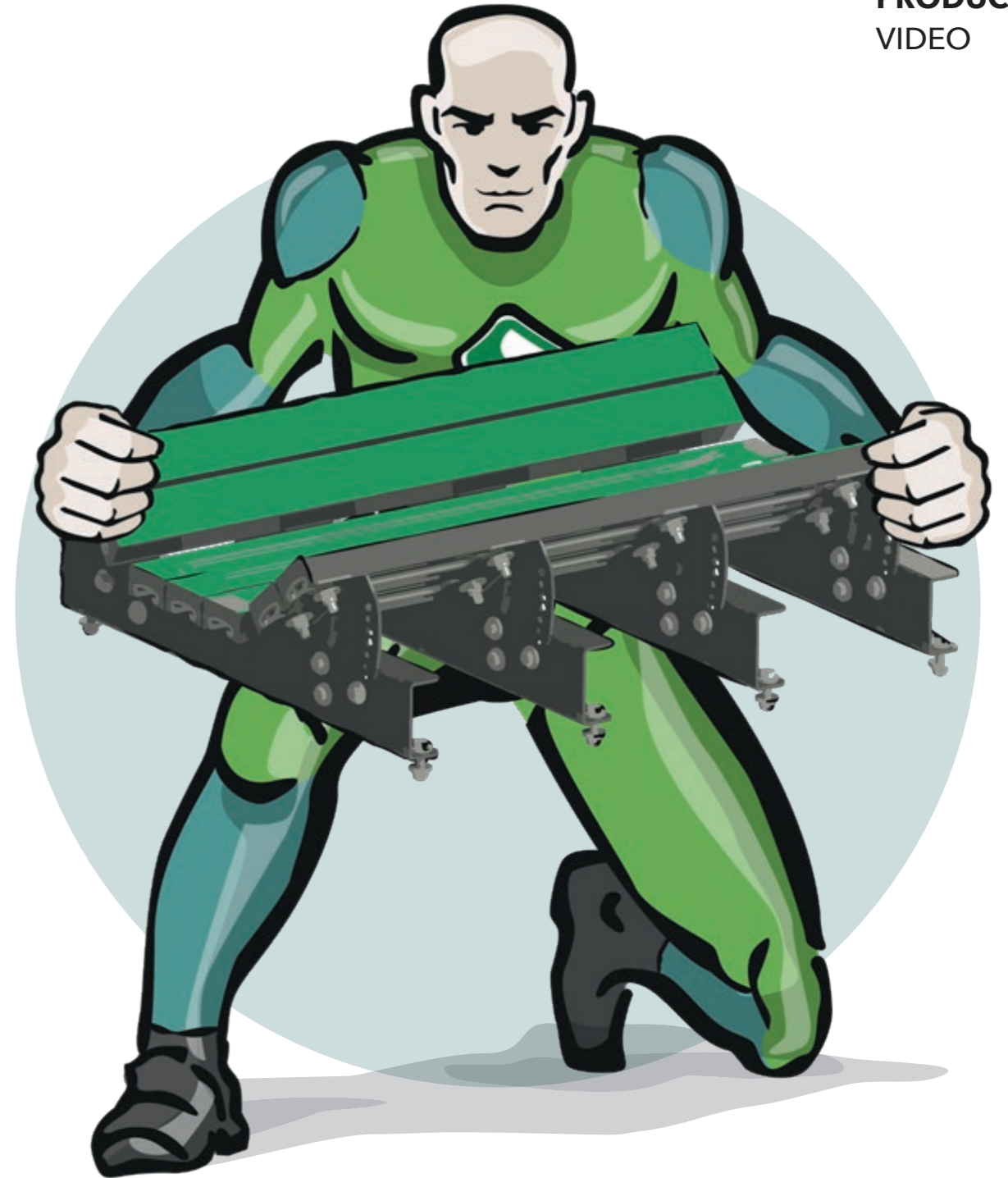
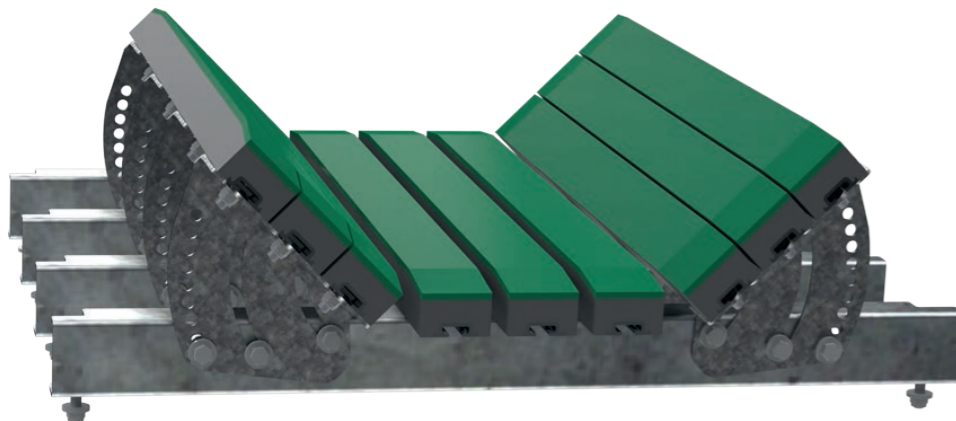


PRODUCT
VIDEO

ADVANTAGES AT A GLANCE

- ◆ Optimum protection of the conveyor belt
- ◆ Easy and quick to install
- ◆ Eco-friendly sealing
- ◆ Minimum friction forces
- ◆ Supports the belt instead of idler rollers
- ◆ Heat-resistant up to 75°C
- ◆ Also available in ATEX quality
- ◆ Absorbs the impact force of the bulk material

Also available with removable blades



STARCLEAN® CENTRAX BELT TRACKING SYSTEM

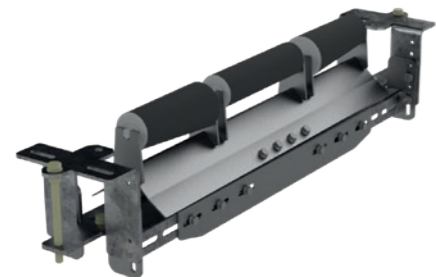
ADVANTAGES AT A GLANCE

- ◆ Low space requirement
- ◆ Universal installation options
- ◆ Reliable alignment of the conveyor belt
- ◆ Rollers coated with diamond-pattern special rubber or with optional extremely wear-resistant polyurethane
- ◆ Optional: tracking rollers also available in ATEX quality
- ◆ Robust and flexible design



TYPE S AND SK

- ◆ Use on a troughed belt (carrying part of belt)
- ◆ Suitable for reversible operations
- ◆ Beam fixed to the framework of the conveyor
- ◆ Continuously variable angle adjustment of the side rollers for optimum adaption to the conveyor belt
- ◆ Heavy-duty turning bearings
- ◆ Simple fine adjustment ensures perfect alignment of the conveyor belt
- ◆ One cylindrical central roller and two conical side rollers



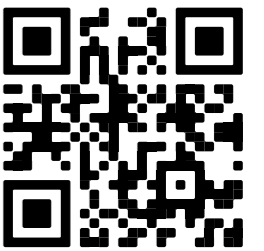
TYPE SO AND SKO

- ◆ Used on the returning belt (return part of belt)
- ◆ Suitable for reversible operations
- ◆ Beam fixed to the framework of the conveyor
- ◆ Heavy-duty turning bearings
- ◆ One cylindrical central roller and two conical side rollers



TYPE SR AND SRG

- ◆ Used on the returning belt (return part of belt)
- ◆ Heavy-duty turning bearings



PRODUCT
VIDEO

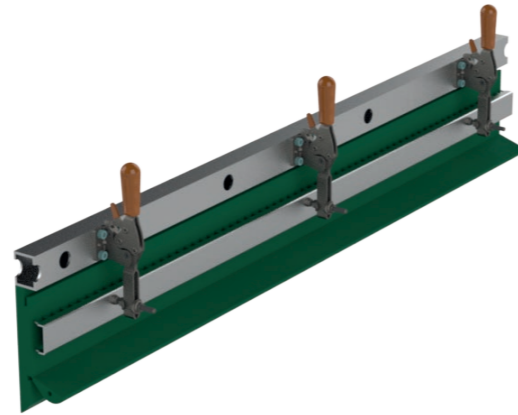
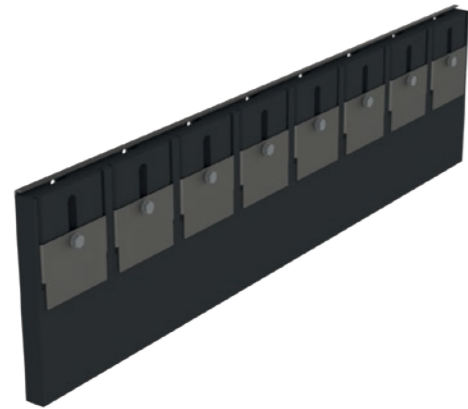


STARCLEAN® SEAL / SPILL-EX / SEALTEK TRANSFER POINT SEALS

ADVANTAGES AT A GLANCE

- ◆ Optimum reduction of dust emissions and contamination
- ◆ Efficient material guidance
- ◆ Wear-resistant dust seal

- ◆ Simple installation
- ◆ Optimum belt protection
- ◆ Optimized lifespans



SPILL-EX

- ◆ For the reverse side of the transfer point
- ◆ Four different versions available
- ◆ Also available as a side seal

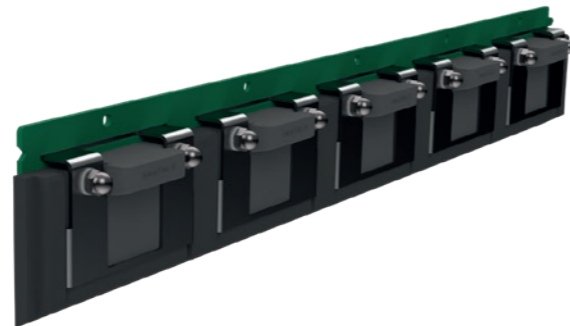


SEAL-TEK R

- ◆ Modular design suitable for any rear wall
- ◆ Individual segments for individual Adjustment to the trough
- ◆ Mounting plate made of highly wear-resistant steel

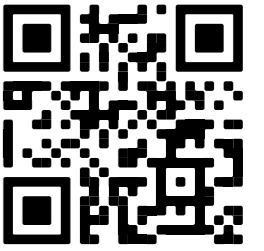
SEAL

- ◆ Dust seal adjusts to the belt troughing
- ◆ Combination of special material available in different hardness degrees
- ◆ Optional: 2 attachment variants: bolted or with quick-release lever



SEAL-TEK S

- ◆ 1-meter-long mounting plate made of highly wear-resistant steel
- ◆ 5 overlapping sealing blocks

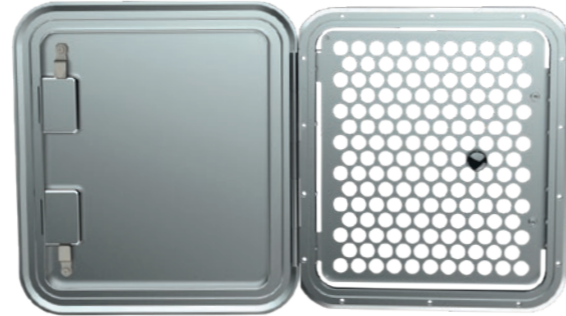


PRODUCT
VIDEO

STARCLEAN® ID INSPECTION DOOR

ADVANTAGES AT A GLANCE

- ◆ Dust-proof
- ◆ Simplified maintenance and inspection of the conveyor belt cleaner
- ◆ Robust, impact-resistant material
- ◆ Secured against unauthorized access
- ◆ Suitable for every transfer point
- ◆ Easy and quick to install
- ◆ Protection against reaching into the chute
- ◆ Permits inspection even during operation
- ◆ Captive screws and cable to secure the grid



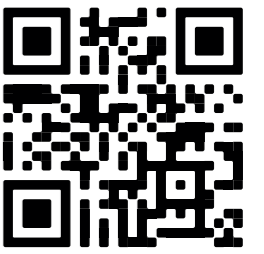
Size S:
380 x 280 mm



Size M:
405 x 375 mm



Size L:
520 x 465 mm



PRODUCT
VIDEO



STARCLEAN® SERVICE AND ADVICE



CUSTOMER SERVICE YOUR SATISFACTION IS OUR CORE BUSINESS

Providing services goes without saying for us. From advisory all the way to installation or maintenance services, our expert service professionals are always at your side to help find the perfect solution for your belt conveyor.

WE ARE ONLY SATISFIED WHEN YOU ARE TOO.

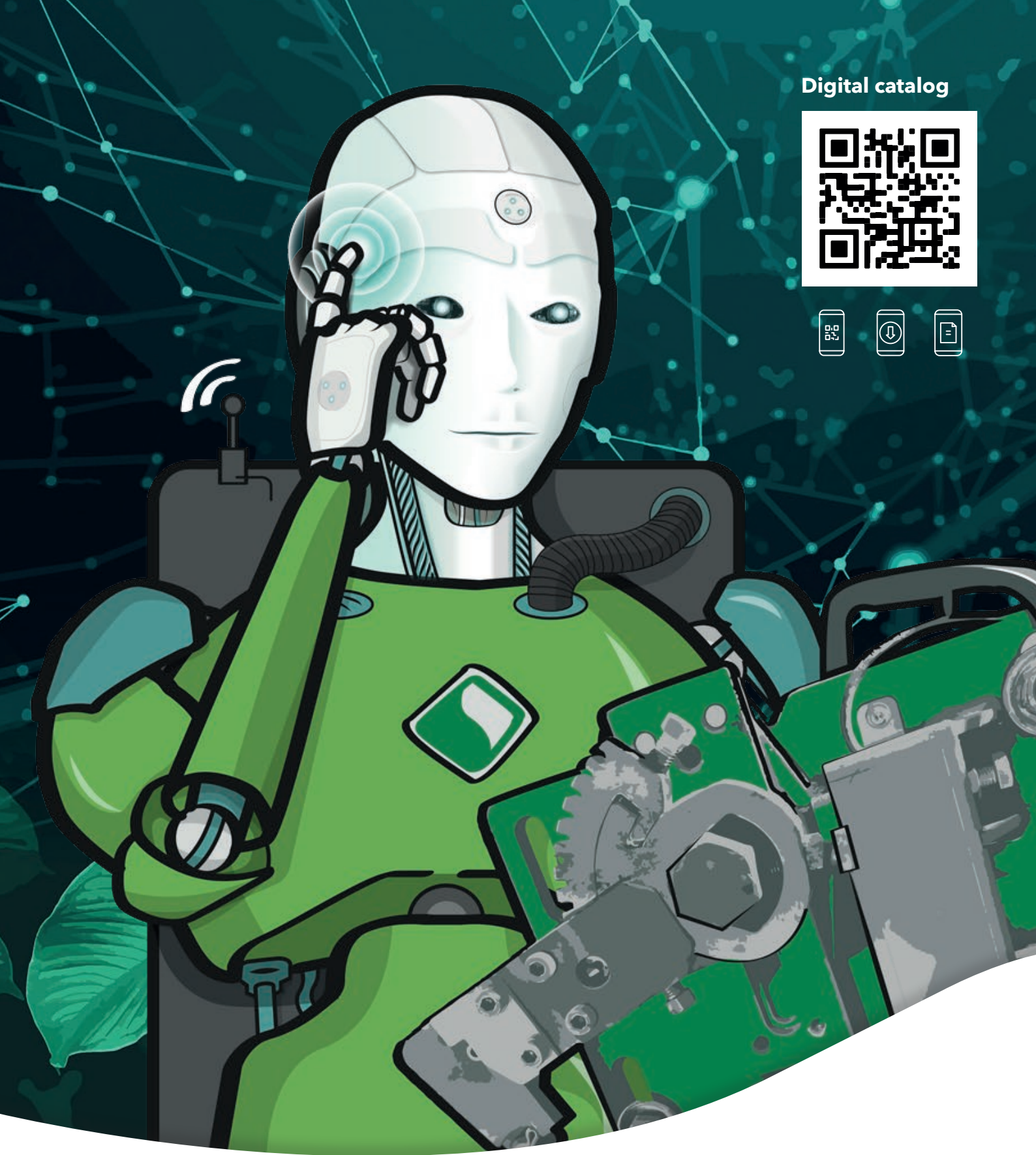
STARCLEAN® „SPILLAGE CONTROL“



ADVANTAGES AT A GLANCE

- ◆ Optimization of the entire plant system
- ◆ Increase of plant profitability
- ◆ Prevention of dust emissions that are harmful to the environment and to health
- ◆ Loss-free material transport
- ◆ Dramatically extends the lifespan of the conveyor belt

www.starclean-solutions.com



Digital catalog



Schulte Strathaus GmbH & Co. KG
Runtestraße 42
59457 Werl, Germany

Tel.: +49 (0) 2922 9775-0
info@starclean-solutions.de
www.starclean-solutions.de

