



Juncor 



iwis

antriebssysteme
wir bewegen die welt

**Correntes de
Elevação**





iwis Leaf chains: Tough. Reliable. Strong.

iwis leaf chains lift loads reliably and are compliant with the EC Machine Directive 2006/42/EC. Unlike roller chains, leaf chains consist of pins and link plates only, so **extremely high breaking forces** can be achieved.

Highlights

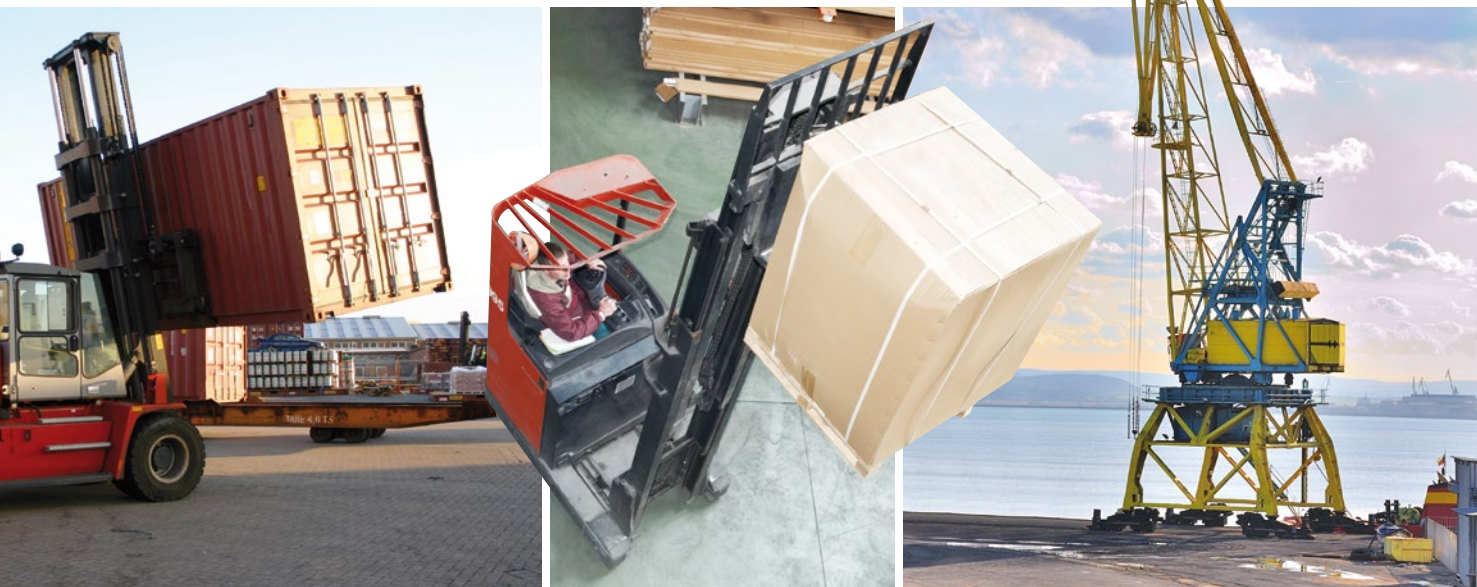
- 1 iwis link plates with very high tensile strengths
- 2 Pins with extra hardened surface for high wear resistance

Application fields

- Forklift trucks
- Lifting gear
- Toolmaking machinery
- Steel industry
- Container lift trucks
- Work platforms

... and wherever else there are lift requirements!





Highlights

- Precision-formed, heat-treated and shot-peened link plates with optimised geometry
- Higher breaking forces achieved by optimised plate thickness
- Improved press-fitting of pins and outer plates for higher fatigue strength
- Link plates with a particularly high contact ratio
- Pins with hardened surfaces for increased wear resistance
- Special versions manufactured to works standards available
- Different pear drops and anchor bolts possible
- Wide range of products

CE iwis leaf chains are compliant with
EC Machine Directive 2006/42/EC

Research and development

iwis has been working for more than 15 years on the research and development of new leaf chains. We combine up-to-the-minute technology and assembly processes with optimum materials, coatings and geometry to constantly improve the technical characteristics of our products.

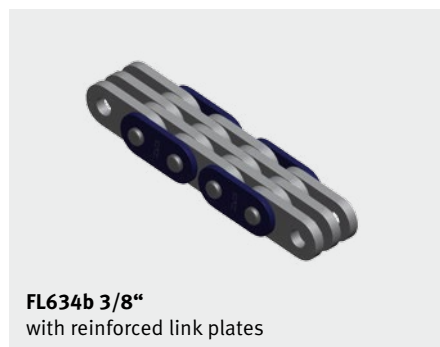
Our chains are designed in close collaboration with end users and are available from different iwis production sites.

We offer the following customer services on request:

- Wear analysis
- Fatigue strength analysis
- Tensile load analysis
- Technical assessment tool available

We use in-house developed test stands and methods to assure quality.

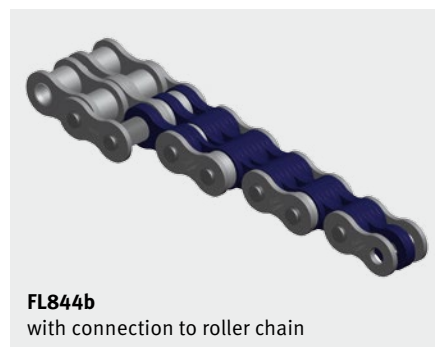
Examples of special versions



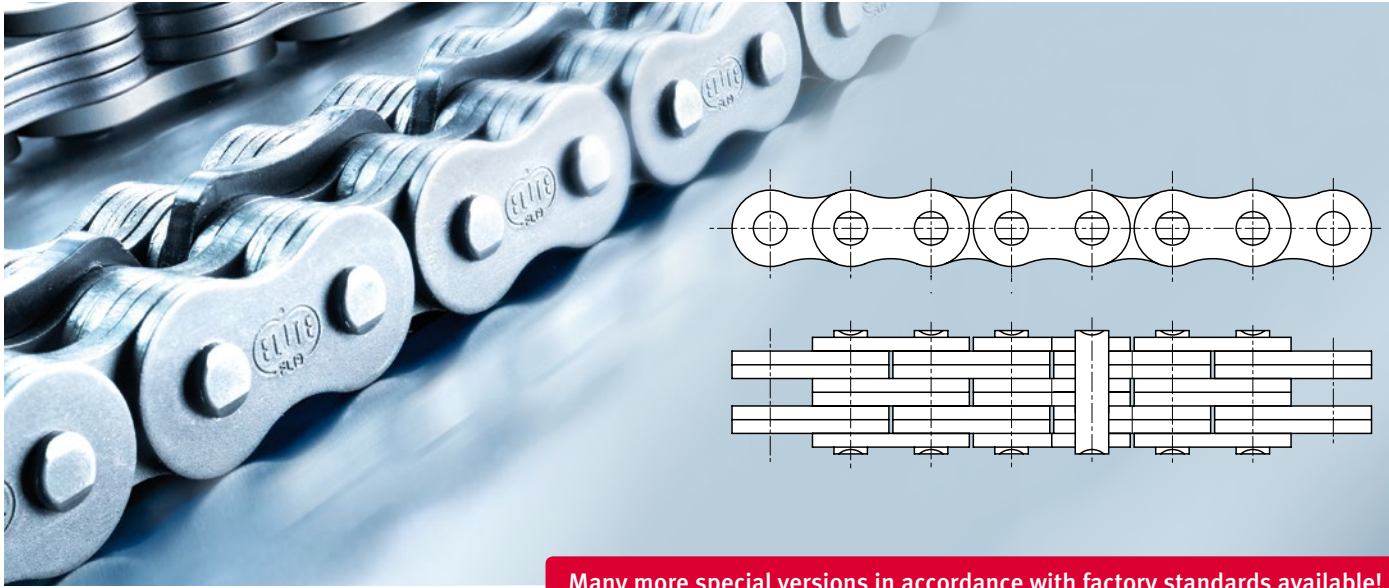
FL634b 3/8"
with reinforced link plates



FL834b
with customer-specific pear drop links



FL844b
with connection to roller chain



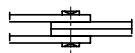
Many more special versions in accordance with factory standards available!

iwis standard leaf chain program

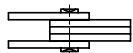
Series LH [BL]

reinforced design, in accordance with American standard (ISO 4347 and DIN 8152)

2x2 2x3 3x4 4x4 4x6 6x6 8x8



2x2



2x3



3x4



4x4



4x6



6x6



8x8

Series LL [F]

lightweight design, in accordance with European standard (ISO 4347 and DIN 8152)

2x2 2x3 3x4 4x4 4x6 6x6 8x8

Series AL

lightweight design, in accordance with American (dimensions as per DIN 8188)

2x2 2x3 3x4 4x4 4x6 6x6 8x8

Some examples of special leaf chains with hose routings and hydraulic mast guards

Type F2544 KS 105 / *LL1644F1



Type BL633 KS / *BL623F3



Type BL866 KS104 / *BL 866F1



Please refer to the ELITE main catalogue and the JWIS main catalogue for more information about our leaf chains

Our subsidiaries

Germany

iwis antriebssysteme GmbH & Co. KG
Albert-Roßhaupter-Straße 53
81369 München
Tel. +49 89 76909-1500
Fax +49 89 76909-1198
sales@iwis.com

Germany

iwis antriebssysteme GmbH
Essener Straße 23
57234 Wilnsdorf
Tel. +49 2739 86-0
Fax +49 2739 86-22
sales-wilnsdorf@iwis.com

Germany

iwis agrisystems
Schützenweg 5
36205 Sontra
Tel. +49 5653 9778-0
Fax +49 5653 9778-26
agrisystems@iwis.com

Great Britain

iwis drive systems Ltd.
Unit 8c Bloomfield Park
Bloomfield Road, Tipton
West Midlands, DY4 9AP
Tel. +44 12 15213600
Fax +44 12 15200822
salesuk@iwis.com

France

iwis systèmes de transmission
10, rue du Luxembourg
69330 Meyzieu
Tel. +33 4374515-70
Fax +33 4374515-71
salesfr@iwis.com

Switzerland

iwis AG Kettentechnik
Bahnhof 4 (Postfach)
5504 Othmarsingen
Tel. +41 62 8898999
Fax +41 62 8898990
info@iwis-ketten.ch

Italy

iwis antriebssysteme Italia
Tel. +39 340 9296142
Fax +49 89 76909 491647
salesit@iwis.com

China

iwis drive systems (Suzhou) Co., Ltd.
266 Lv Liang Shan Road
215153 Suzhou, China
Tel. +86 512 8566-3010
Fax +86 512 8566-3009
salescn@iwis.com

USA

iwis drive systems, LLC
Building 100, 8266 Zionsville Road
Indianapolis, IN 46268 USA
Tel. +1 317 821-3539
Fax +1 317 821-3569
sales@iwisusa.com

Canada

iwis drive systems, Inc.
#1- 19349- 94th ave
Surrey B.C. V4E 4E6
Tel. +1 778-298-3622
Fax +1 778-298-7219
salesca@iwisusa.com

Brazil

iwis Sistemas de Transmissão
de Energia Mecânica Ltda.
Rua Bento Rosa, nº 1816
Bairro Hidráulica
95.900-000 Lajeado, RS
Tel. +55 51 3748-7402
salesbrazil@iwis.com

South Africa

iwis drive systems, (Pty) Ltd
Unit 3, 127 Koornhof Road
Meadowdale, 1613, South Africa
Tel. +27 11 392-2306
Fax +27 11 392-3295
salessa@iwis.com

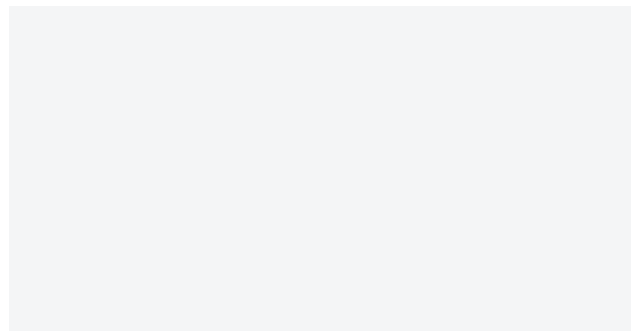
Turkey

iwis antriebssysteme GmbH & Co. KG
Türkiye İstanbul İrtibat Bürosu
Tel. +90 543 554 3483
salestr@iwis.com

www.iwis.com

iwis
antriebssysteme
wir bewegen die welt

Your sales representative





www.juncor.pt

PORTAL B2B:

- Compras online
- Esclarecimento de dúvidas: Preços e Stocks
- Encomendas
- Licitação
- Descontos
- Eficiência e Segurança

Redes sociais

Facebook: www.facebook.com/juncor

Twitter: www.twitter.com/juncor_sa

LinkedIn: www.linkedin.com/company/juncor-sa

Canal Youtube: www.youtube.com/juncoraccess

“Adicionamos movimento ao seu negócio!”