

CORRENTES IWIS EUROCHAIN



PRODUTO - SERVIÇO - ENGENHARIA

iwis
antriebssysteme
wir bewegen die welt

Product range



NEW
- updated -

**EURO
CHAIN**[®]
powered by iwis

Roller chains for drive and conveyor purposes

www.iwis.com



A strong product brand from iwis

The iwis brand world

We always keep the diversity of **customer requirements** in focus and strive to keep things moving worldwide with outstanding brands, innovative product developments and first-class design solutions individually tailored to the needs of our customers. The product brand Eurochain (EC) offers a **specially coordinated product range** at an excellent price-performance ratio for a **wide variety of applications**.

Highlights

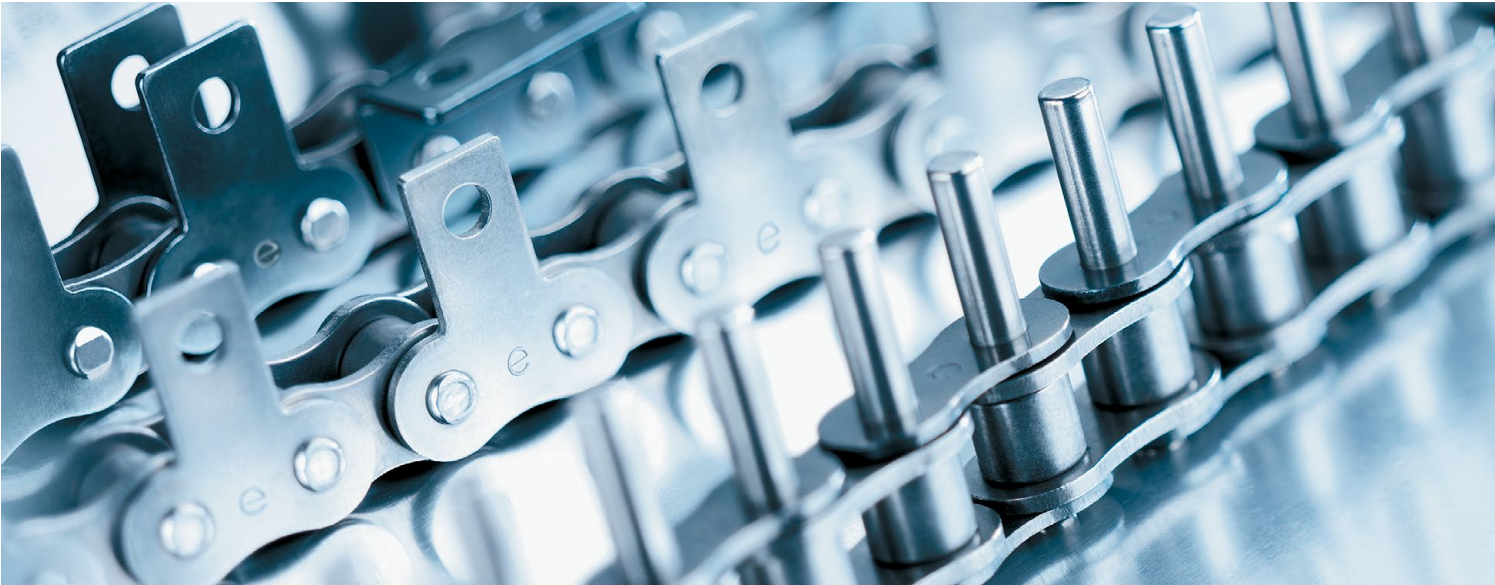
- EC roller chains have **significantly improved fatigue strength and breaking strength values** that surpass the minimum requirements of standard DIN ISO 606.
- All EC chains are subject to **quality control, continuous testing and improvement** in accordance with the high standards of ISO 9001.
- Guaranteed high quality for the entire EC product range.
- Rapid Service for standard roller chains: delivery possible from stock at short notice within 24 hours.
- Roller chains with attachments: adaptation and customized manufacturing also possible at short notice. Roller chains with bent attachments, straight attachments and extended pins can be individually made to customer requirements at our Competence Center in Wilnsdorf.
- High flexibility and availability

EC specifications

- EC bushes are absolutely cylindrical and **mostly seamless, depending on chain type. Special wound versions also available.**
- EC chain plates have optimized dimensions, are precisely formed, hardened and tempered for greater durability. **The plates are also blue-annealed.**
- EC pins have a smooth, high-strength **wear-optimized** surface.
- EC rollers are manufactured as seamless solid cylinders; a special surface treatment process ensures high **wear resistance.**
- **Clearly defined** grades of heat-treated and case-hardened steel alloys are used for all chain components.
- Initial lubricant is EL-4
- Various initial lubricants are possible, depending on application requirements.
- **Pair-matched chains of equal length can also be supplied.**

Product overview

- British and ANSI standard roller chains
- Nickel-plated roller chain versions
- Roller chains with straight attachments
- Roller chains with narrow bent and straight attachments
- Roller chains with wide bent and straight attachments
- Roller chains with extended pins
- Side bow chains
- Push-pull (anti-backbend) chains on request



Contents

Roller chains, British standard

- 04 Roller chains according to ISO 606 (DIN 8187)
- 06 Roller chains with straight side plates according to ISO 606 (DIN 8187)
- 07 Roller chains – nickel-plated series according to ISO 606 (DIN 8187)
- 08 Roller chains with straight side plates – nickel-plated series according to ISO 606 (DIN 8187)

Roller chains with attachments

- 09 Roller chains with extended pins
- 09 Roller chains with U-shaped attachments
- 10 Roller chains with narrow bent and straight attachment plates acc. to ISO 606 (DIN 8187)
- 11 Roller chains with wide bent and straight attachment plates acc. to ISO 606 (DIN 8187)

Roller chains, ANSI standard

- 12 Roller chains acc. to ISO 606 (DIN 8188), American standard

Side bow chains

- 12 Side bow chains for transporting, conveying, pulling on curved shape tracks

**EURO
CHAIN**®
powered by iwis

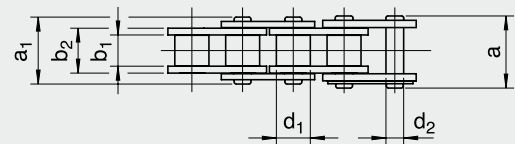
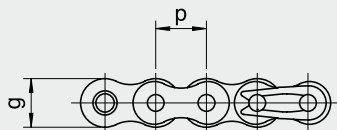


Roller chains

according to ISO 606 (DIN 8187), British standard

ISO	iwis designation	Pitch p		Ave. tensile strength F_a (N)	Min. tensile strength F_u (N)	Bearing area f (cm ²)	Weight per meter (kg/m)	Inner link				Outer link				Article No.
		mm	inch					Inner width b_1 min. (mm)	Inner link width b_2 max. (mm)	Plate height g max. (mm)	Pin length a_1 max. (mm)	Pin length conn. link ² a (mm) max.	Roller diameter d_1 max. (mm)	Pin diameter d_2 max. (mm)	Transverse pitch e (mm)	
04 ⁴	EC-4-M	6.00	-	3,100	3,000	0.076	0.11	2.80	4.15	5.00	7.40	10.3	4.00	1.85	-	40001782
06 B-1	EC-6-M ¹	9.525	3/8	10,400	8,900	0.28	0.39	5.72	8.53	8.26	13.5	16.8	6.35	3.28	-	40007269
06 B-2	EC-6-D ¹	9.525	3/8	18,000	16,900	0.56	0.75	5.72	8.53	8.26	23.8	27.1	6.35	3.28	10.24	40007877
06 B-3	EC-6-T ¹	9.525	3/8	25,500	24,900	0.84	1.10	5.72	8.53	8.26	34.0	37.3	6.35	3.28	10.24	40007732
08B-1	EC-8-M	12.70	1/2	19,600	17,800	0.5	0.66	7.75	11.30	11.81	17.0	20.9	8.51	4.45	-	40007270
08B-2	EC-8-D	12.70	1/2	38,500	31,100	1.01	1.29	7.75	11.30	11.81	31.0	34.9	8.51	4.45	13.92	40007881
08 B-3	EC-8-T	12.70	1/2	50,000	44,500	1.51	1.91	7.75	11.30	11.81	44.9	48.8	8.51	4.45	13.92	40007883
10 B-1	EC-10-M	15.875	5/8	26,800	22,200	0.67	0.91	9.65	13.28	14.73	19.6	23.7	10.16	5.08	-	40007271
10 B-2	EC-10-D	15.875	5/8	54,000	44,500	1.35	1.79	9.65	13.28	14.73	36.2	40.3	10.16	5.08	16.59	40007886
10 B-3	EC-10-T	15.875	5/8	79,500	66,700	2.02	2.72	9.65	13.28	14.73	52.8	56.9	10.16	5.08	16.59	40007888
12 B-1	EC-12-M	19.05	3/4	32,000	28,900	0.89	1.15	11.68	15.62	16.13	22.7	27.3	12.07	5.72	-	40007272
12 B-1-V	EC-12-M-V ³	19.05	3/4	41,100	40,000	1.15	1.47	11.68	20.10	16.13	26.15	28.05	12.07	5.72	-	40000880
12 B-2	EC-12-D	19.05	3/4	66,600	57,800	1.78	2.29	11.68	15.62	16.13	42.2	46.8	12.07	5.72	19.46	40007890
12 B-3	EC-12-T	19.05	3/4	97,000	86,700	2.68	3.46	11.68	15.62	16.13	61.7	66.3	12.07	5.72	19.46	40007892

¹ Only with straight side plates ² a = conn. link with spring clip ³ Heavy version ⁴ Chain is no longer listed in ISO 606:2015.



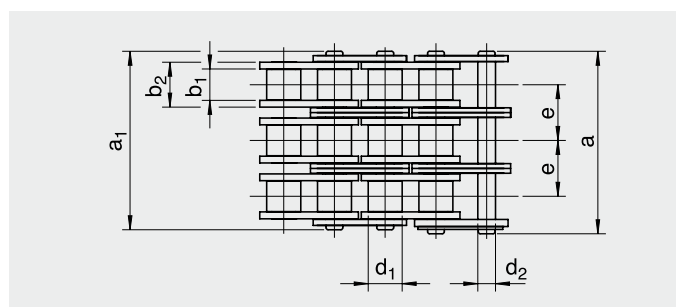
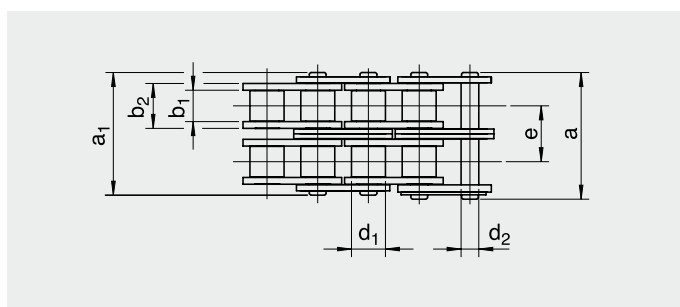


Roller chains

according to ISO 606 (DIN 8187), British standard

ISO	iwis designation	Pitch p		Ave. tensile strength F_u (N)	Min. tensile strength F_l (N)	Bearing area f (cm ²)	Weight per meter (kg/m)	Inner link			Outer link			Transverse pitch e (mm)	Article No.	
		mm	inch					Inner link width b_1 min. (mm)	Inner link width b_2 max. (mm)	Plate height g max. (mm)	Pin length a_1 max. (mm)	Pin length conn. link ² a (mm) max.	Roller diameter d_1 max. (mm)			Pin diameter d_2 max. (mm)
16 B-1	EC-16-M	25.40	1	75,000	60,000	2.11	2.68	17.02	25.45	21.08	36.1	41.5	15.88	8.28	-	40007273
16 B-2	EC-16-D	25.40	1	144,000	106,000	4.21	5.30	17.02	25.45	21.08	68.0	73.4	15.88	8.28	31.88	40007895
16 B-3	EC-16-T	25.40	1	191,000	160,000	6.32	7.93	17.02	25.45	21.08	99.9	105.3	15.88	8.28	31.88	40007370
20 B-1	EC-20-M	31.75	1 1/4	108,000	95,000	2.96	3.72	19.56	29.01	26.42	43.2	49.3	19.05	10.19	-	40005137
20 B-2	EC-20-D	31.75	1 1/4	210,000	170,000	5.91	7.56	19.56	29.01	26.42	79.7	85.8	19.05	10.19	36.45	40005392
20 B-3	EC-20-T	31.75	1 1/4	299,000	250,000	8.87	11.13	19.56	29.01	26.42	116.1	122.2	19.05	10.19	36.45	40005207
24 B-1	EC-24-M	38.10	1 1/2	176,000	160,000	5.55	6.97	25.40	37.92	33.4	53.4	60.0	25.40	14.63	-	40005206
24 B-2	EC-24-D	38.10	1 1/2	315,000	280,000	11.1	13.81	25.40	37.92	33.4	101.8	108.4	25.40	14.63	48.36	40005210
24 B-3	EC-24-T	38.10	1 1/2	480,000	425,000	16.64	20.58	25.40	37.92	33.4	150.2	156.8	25.40	14.63	48.36	40005212
28 B-1	EC-28-M	44.45	1 3/4	225,000	200,000	7.40	9.09	30.99	46.58	37.08	65.1	72.5	27.94	15.90	-	40006055
32 B-1	EC-32-M	50.80	2	270,000	250,000	8.12	9.37	30.99	45.57	42.29	67.4	75.3	29.21	17.81	-	40005133
32 B-2	EC-32-D	50.80	2	510,000	450,000	16.23	18.47	30.99	45.57	42.29	126.0	133.9	29.21	17.81	58.55	40005214
32 B-3	EC-32-T	50.80	2	720,000	670,000	24.35	27.79	30.99	45.57	42.29	184.5	192.4	29.21	17.81	58.55	40006058

² a = conn. link with spring clip

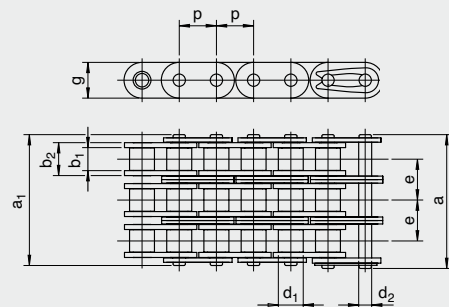
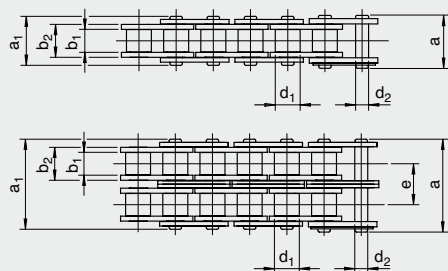




Roller chains with straight side plates according to ISO 606 (DIN 8187), British standard

ISO	iwis designation	Pitch p		Min. tensile strength F_u (N)	Bearing area f (cm ²)	Weight per meter (kg/m)	Inner link			Outer link			Article No.		
		mm	inch				Inner width b_1 min. (mm)	Inner link width b_2 max. (mm)	Plate height g max. (mm)	Pin length a_1 max. (mm)	Pin length conn. link ² a (mm) max.	Roller diameter d_1 max. (mm)		Pin diameter d_2 max. (mm)	Transverse pitch e (mm)
06 B-1	EC-6-M GL	9.525	3/8	8,900	0.28	0.39	5.72	8.53	8.26	13.5	16.8	6.35	3.28	-	40007269
06 B-2	EC-6-D GL	9.525	3/8	16,900	0.56	0.75	5.72	8.53	8.26	23.8	27.1	6.35	3.28	10.24	40007877
06 B-3	EC-6-T GL	9.525	3/8	24,900	0.84	1.10	5.72	8.53	8.26	34.0	37.3	6.35	3.28	10.24	40007732
08 B-1	EC-8-M GL	12.70	1/2	17,800	0.5	0.74	7.75	11.30	11.81	17.0	20.9	8.51	4.45	-	40007880
08 B-2	EC-8-D GL	12.70	1/2	31,100	1.01	1.45	7.75	11.30	11.81	31.0	34.9	8.51	4.45	13.92	40007882
08 B-3	EC-8-T GL	12.70	1/2	44,500	1.51	2.15	7.75	11.30	11.81	44.9	48.8	8.51	4.45	13.92	40007884
10 B-1	EC-10-M GL	15.875	5/8	22,200	0.67	1.01	9.65	13.28	14.73	19.6	23.7	10.16	5.08	-	40007885
10 B-2	EC-10-D GL	15.875	5/8	44,500	1.35	2.04	9.65	13.28	14.73	36.2	40.3	10.16	5.08	16.59	40007887
10 B-3	EC-10-T GL	15.875	5/8	66,700	2.02	3.06	9.65	13.28	14.73	52.8	56.9	10.16	5.08	16.59	40008111
12 B-1	EC-12-M GL	19.05	3/4	28,900	0.89	1.27	11.68	15.62	16.13	22.7	27.3	12.07	5.72	-	40007889
12 B-2	EC-12-D GL	19.05	3/4	57,800	1.78	2.51	11.68	15.62	16.13	42.2	46.8	12.07	5.72	19.46	40007891
12 B-3	EC-12-T GL	19.05	3/4	86,700	2.68	3.48	11.68	15.62	16.13	61.7	66.3	12.07	5.72	19.46	40007893
16 B-1	EC-16-M GL	25.40	1	60,000	2.11	2.84	17.02	25.45	21.08	36.1	41.5	15.88	8.28	-	40007894
16 B-2	EC-16-D GL	25.40	1	106,000	4.21	5.59	17.02	25.45	21.08	68.0	73.4	15.88	8.28	31.88	40007896
16 B-3	EC-16-T GL	25.40	1	160,000	6.32	8.38	17.02	25.45	21.08	99.9	105.3	15.88	8.28	31.88	40008112
20 B-1	EC-20-M GL	31.75	1 1/4	95,000	2.96	4.21	19.56	29.01	26.42	43.2	49.3	19.05	10.19	-	40004229
20 B-2	EC-20-D GL	31.75	1 1/4	170,000	5.91	8.34	19.56	29.01	26.42	79.7	85.8	19.05	10.19	36.45	40006045
24 B-1	EC-24-M GL	38.10	1 1/2	160,000	5.55	7.43	25.40	37.92	33.4	53.4	60.0	25.40	14.63	-	40006048
24 B-2	EC-24-D GL	38.10	1 1/2	280,000	11.1	14.74	25.40	37.92	33.4	101.8	108.4	25.40	14.63	48.36	40006051
32 B-1	EC-32-M GL	50.80	2	250,000	8.12	10.00	30.99	45.57	42.29	67.4	75.3	29.21	17.81	-	40004554

² a = conn. link with spring clip



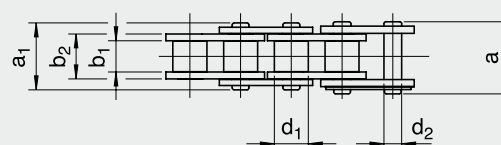
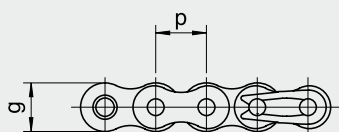


Roller chains – nickel-plated series

based on EC roller chains according to ISO 606 (DIN 8187)

ISO	iwis designation	Pitch p		Min. tensile strength F_t (N)	Bearing area f (cm ²)	Weight per meter (kg/m)	Inner link			Outer link			Transverse pitch e (mm)	Article No.	
		mm	inch				Inner width b_1 min. (mm)	Inner link width b_2 max. (mm)	Plate height g max. (mm)	Pin length a_1 max. (mm)	Pin length com. link ² a (mm) max.	Roller diameter d_1 max. (mm)			Pin diameter d_2 max. (mm)
06 B-1	EC-6-M ¹	9.525	3/8	8,900	0.28	0.39	5.72	8.53	8.26	13.5	16.8	6.35	3.28	–	40006110
06 B-2	EC-6-D ¹	9.525	3/8	16,900	0.56	0.75	5.72	8.53	8.26	23.8	27.1	6.35	3.28	10.24	40007072
08 B-1	EC-8-M	12.70	1/2	17,800	0.5	0.66	7.75	11.30	11.81	17.0	20.9	8.51	4.45	–	40006111
08 B-2	EC-8-D	12.70	1/2	31,100	1.01	1.29	7.75	11.30	11.81	31.0	34.9	8.51	4.45	13.92	40006112
10 B-1	EC-10-M	15.875	5/8	22,200	0.67	0.91	9.65	13.28	14.73	19.6	23.7	10.16	5.08	–	40006115
10 B-2	EC-10-D	15.875	5/8	44,500	1.35	1.79	9.65	13.28	14.73	36.2	40.3	10.16	5.08	16.59	40006116
12 B-1	EC-12-M	19.05	3/4	28,900	0.89	1.15	11.68	15.62	16.13	22.7	27.3	12.07	5.72	–	40006118
12 B-2	EC-12-D	19.05	3/4	57,800	1.78	2.29	11.68	15.62	16.13	42.2	46.8	12.07	5.72	19.46	40006117
16 B-1	EC-16-M	25.40	1	60,000	2.11	2.68	17.02	25.45	21.08	36.1	41.5	15.88	8.28	31.88	40006119
16 B-2	EC-16-D	25.40	1	106,000	4.21	5.30	17.02	25.45	21.08	68.0	73.4	15.88	8.28	31.88	40006122
20 B-1	EC-20-M	31.75	1 1/4	95,000	2.96	3.72	19.56	29.01	26.42	43.2	49.3	19.05	10.19	36.45	40005742
20 B-2	EC-20-D	31.75	1 1/4	170,000	5.91	7.56	19.56	29.01	26.42	79.7	85.8	19.05	10.19	36.45	40005746
24 B-1	EC-24-M	38.10	1 1/2	160,000	5.55	6.97	25.40	37.92	33.4	53.4	60.0	25.40	14.63	48.36	
24 B-2	EC-24-D	38.10	1 1/2	280,000	11.1	13.81	25.40	37.92	33.4	101.8	108.4	25.40	14.63	48.36	40005753

¹ Only with straight side plates ² a = conn. link with spring clip

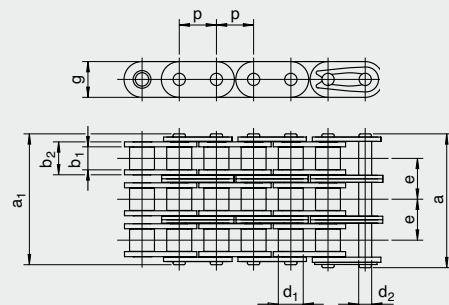
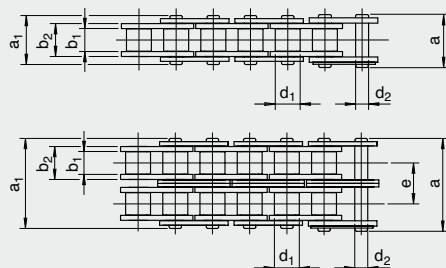




Roller chains with straight side plates – nickel-plated series according to ISO 606 (DIN 8187)

ISO	iwis designation	Pitch p		Min. tensile strength F_0 (N)	Weight per meter (kg/m)	Inner link			Outer link			Transverse pitch e (mm)	Article No.	
		mm	inch			Inner width b_1 min. (mm)	Inner link width b_2 max. (mm)	Plate height g max. (mm)	Pin length a_1 max. (mm)	Pin length com. link ² a (mm) max.	Roller diameter d_1 max. (mm)			Pin diameter d_2 max. (mm)
08 B-1	EC-8-M	12.70	1/2	17,800	0.74	7.75	11.30	11.81	17.0	20.9	8.51	4.45	-	40010824
08 B-2	EC-8-D	12.70	1/2	31,100	1.45	7.75	11.30	11.81	31.0	34.9	8.51	4.45	13.92	40010827
10 B-1	EC-10-M	15.875	5/8	22,200	1.01	9.65	13.28	14.73	19.6	23.7	10.16	5.08	-	40010825
10 B-2	EC-10-D	15.875	5/8	44,500	2.04	9.65	13.28	14.73	36.2	40.3	10.16	5.08	16.59	40010828
12 B-1	EC-12-M	19.05	3/4	28,900	1.27	11.68	15.62	16.13	22.7	27.3	12.07	5.72	-	40010826
12 B-2	EC-12-D	19.05	3/4	57,800	2.51	11.68	15.62	16.13	42.2	46.8	12.07	5.72	19.46	40010829

² a = conn. link with spring clip



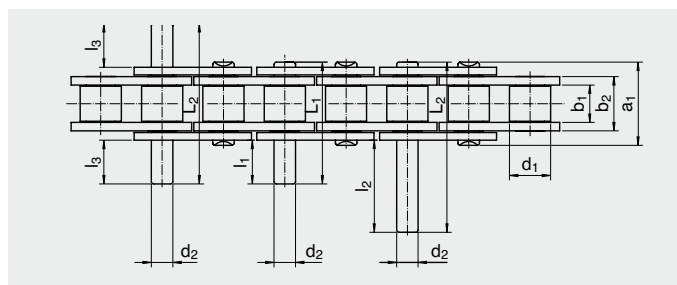
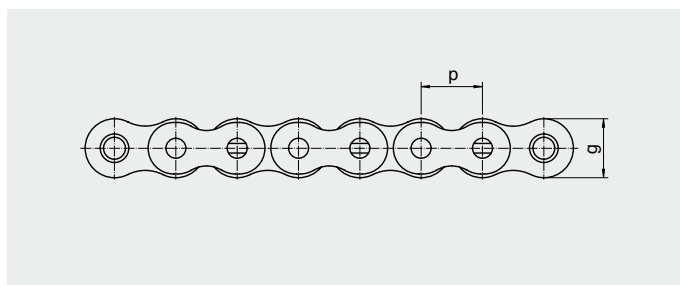


Roller chains with extended pins

based on EC roller chains according to ISO 606 (DIN 8187)

ISO	iwis designation	Pitch p		Min. tensile strength F_u (N)	Inner link			Pin length			Pin extension length				
		mm	inch		Inner width b_1 min. (mm)	Inner link width b_2 max. (mm)	Plate height g max. (mm)	Pin diameter d_2 max. (mm)	Roller diameter d_1 max. (mm)	a_1 max. (mm)	L_1 max. (mm)	L_2 max. (mm)	l_1 (mm)	l_2 (mm)	l_3 (mm)
06 B-1	EC-6-M ¹	9.525	3/8	8,900	5.72	8.53	8.26	3.28	6.35	13.5	23.8	34.0	12.2	-	-
08 B-1	EC-8-M	12.70	1/2	17,800	7.75	11.30	11.81	4.45	8.51	17.0	31.0	44.9	15.5	29.6	15.3
10 B-1	EC-10-M	15.875	5/8	22,200	9.65	13.28	14.73	5.08	10.16	19.6	36.2	52.8	18.5	35.0	18.2
12 B-1	EC-12-M	19.05	3/4	28,900	11.68	15.62	16.13	5.72	12.07	22.7	42.2	61.7	21.5	41.2	21.4
16 B-1	EC-16-M	25.40	1	60,000	17.02	25.45	21.08	8.28	15.88	36.1	68.0	99.9	34.5	65.2	33.7

¹ Only with straight side plates



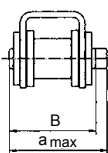
Roller chains with U-shaped attachments

based on EC roller chains ISO 606 (DIN 8187)

with U-shaped attachments: 3030.2 and 3030.9

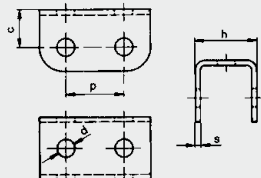
iwis designation	Pitch p (mm)	max B (mm)	a_{max} (mm)	c (mm)	d (mm)	h (mm)	k (mm)	s (mm)	Article No.	
									Attachment 3030.2	Attachment 3030.9
EC-8-M	12.70	19.5	22.0	8.3	4.48	14.5	4.0	1.3	40003131	40003125
EC-8-D	12.70	33.5	35.9	8.3	4.48	28.4	4.0	1.3	40003442	40003127
EC-10-M	15.875	21.9	24.0	10.5	5.15	16.4	2.5	1.3	40003132	40003128
EC-10-D	15.875	38.9	40.8	10.5	5.15	33.0	2.5	1.3	40003443	40003445
EC-12-M	19.05	25.9	27.7	13.0	5.79	19.0	8.0	1.8	40003134	40003129
EC-12-D	19.05	45.4	47.5	12.0	5.79	39.0	7.5	1.8	40003444	40003447
EC-16-M	25.40	39.3	40.9	15.4	8.40	30.0	6.0	1.8	40003135	40003130

CHAIN WIDTH

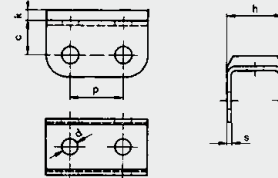


U-shaped attachments are mounted between inner and outer plates. The chain width increases therefore in comparison to standard chains.

No. 3030.2 with standard attachment hole



No. 3030.9 with rubber cover



Cover material: elastomer, hardness 60-65 shore, acidresisting, non-abrasive, temperature up to 90 °C, heat-resistant, colour white



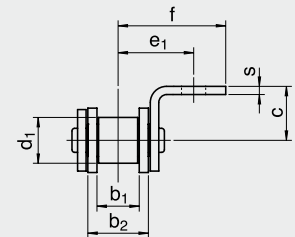
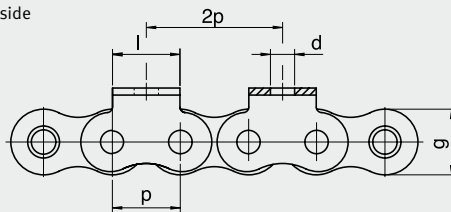
Roller chains with narrow bent and straight attachment plates

based on EC roller chains according to ISO 606 (DIN 8187)

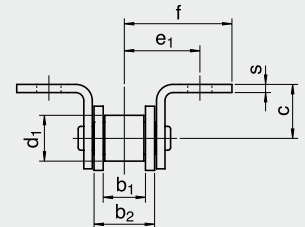
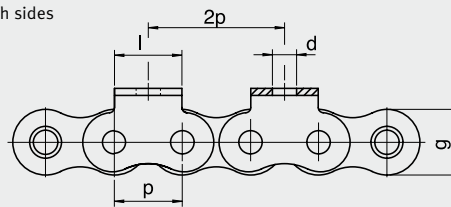
ISO	iwis designation	Pitch p		Min. tensile strength F_0 (N)	Inner link			Dimensions of attachments ²								
		mm	inch		Inner width b_1 min. (mm)	Inner link width b_2 max. (mm)	Plate height g max. (mm)	Roller diameter d_1 max. (mm)	a (mm)	b (mm)	c (mm)	d (mm)	e1 (mm)	f (mm)	l (mm)	s (mm)
06 B-1	EC-6-M ¹	9.525	3/8	8,900	5.72	8.53	8.26	6.35	9	13.8	6.5	3.5	9.3	13.7	8	1.3
08 B-1	EC-8-M	12.70	1/2	17,800	7.75	11.30	11.81	8.51	14.7	20.3	10	4.5	12.9	18.5	12.5	1.3
10 B-1	EC-10-M	15.875	5/8	22,200	9.65	13.28	14.73	10.16	17.2	26.7	10	5.5	16.9	26.4	15	1.6
12 B-1	EC-12-M	19.05	3/4	28,900	11.68	15.62	16.13	12.07	18.7	29	11	6.6	19.2	29.5	18.5	1.8
16 B-1	EC-16-M	25.40	1	60,000	17.02	25.45	21.08	15.88	28.6	41.5	18	9	28.7	41.6	25	3.1

¹ Only with straight side plates ² other dimensions are available on request

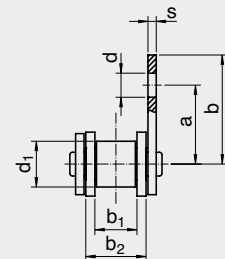
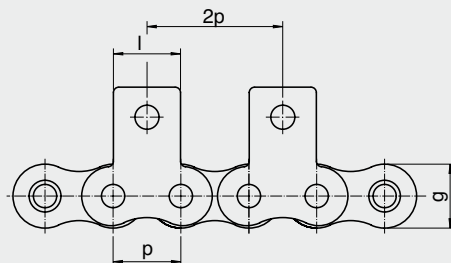
A
Bent attachment plate on one side
EC-2020.1



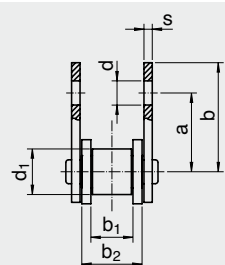
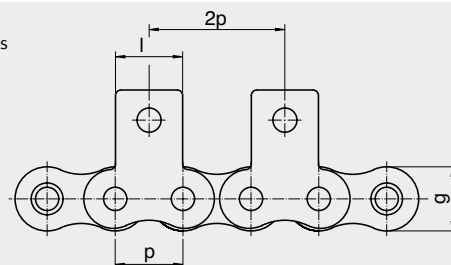
B
Bent attachment plates on both sides
EC-2020.1



D
Attachment plate on one side
EC-1020.1



E
Attachment plate on both sides
EC-1020.1





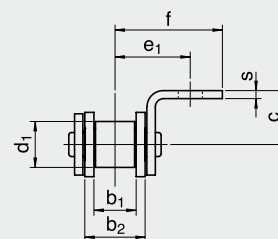
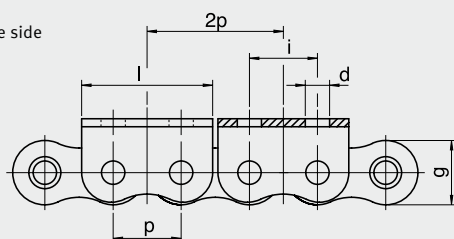
Roller chains with wide bent and straight attachment plates

based on EC roller chains according to ISO 606 (DIN 8187)

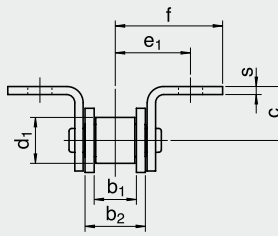
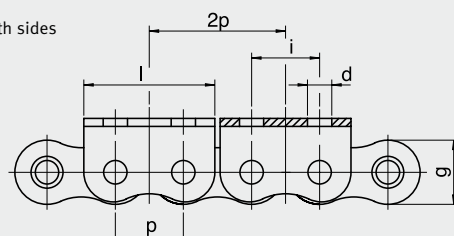
ISO	iwis designation	Pitch p		Min tensile strength F_u (N)	Inner link			Dimensions of attachments ²									
		mm	inch		Inner width b_1 min. (mm)	Inner link width b_2 max. (mm)	Plate height g max. (mm)	Roller diameter d_1 max. (mm)	b (mm)	c (mm)	d (mm)	e_1 (mm)	f (mm)	i (mm)	k (mm)	l (mm)	s (mm)
06 B-1	EC-6-M ¹	9.525	3/8	8,900	5.72	8.53	8.26	6.35	12.6	5.7	3.2	10.3	13.7	9.525	9.2	18.2	1.3
08 B-1	EC-8-M	12.70	1/2	17,800	7.75	11.30	11.81	8.51	20.3	10	4.5	12.9	18.5	12.7	14.7	24.3	1.3
10 B-1	EC-10-M	15.875	5/8	22,200	9.65	13.28	14.73	10.16	26.7	10	5.5	16.9	26.4	15.9	17.2	29.0	1.6
12 B-1	EC-12-M	19.05	3/4	28,900	11.68	15.62	16.13	12.07	29	11	6.6	19.2	29.5	19.1	18.7	33.2	1.8
16 B-1	EC-16-M	25.40	1	60,000	17.02	25.45	21.08	15.88	41.3	18	9.0	28.7	41.6	25.4	28.4	45.6	3.1

¹ Only with straight side plates ² other dimensions are available on request

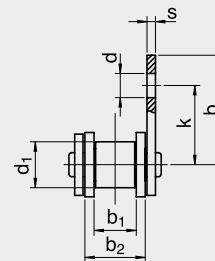
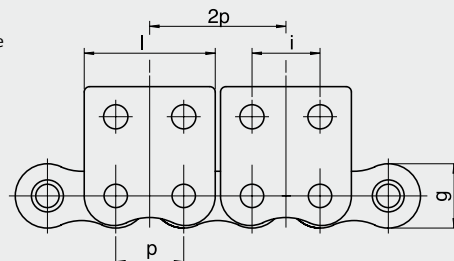
A2
Bent attachment plate on one side
EC-2030.2



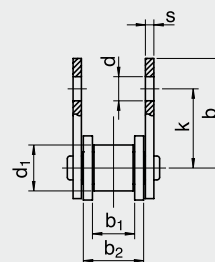
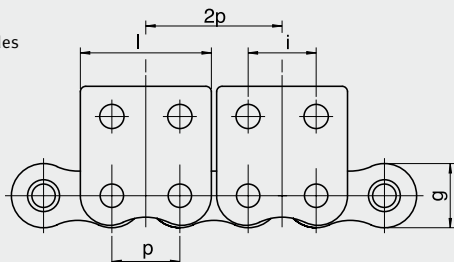
B2
Bent attachment plate on both sides
EC-2030.2



D2
Attachment plate on one side
EC-1030.2



E2
Attachment plate on both sides
EC-1030.2



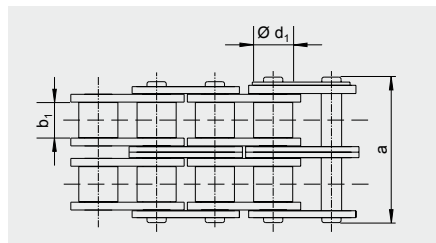
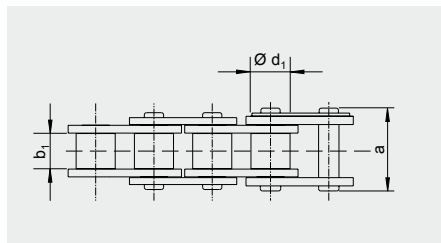


Roller chains

according to ISO 606 (DIN 8188), ANSI standard

ISO	ANSI designation	iwis designation	Pitch p		Ave. tensile strength F_b (N)	Min. tensile strength F_u (N)	Weight per meter (kg/m)	Inner link		Outer link				Article No.	
			mm	inch				Inner width b_1 min. (mm)	Plate height g max. (mm)	Pin length a_1 max. (mm)	Pin length com. link-a (mm) max.	Roller diameter d_1 max. (mm)	Pin diameter d_2 max. (mm)		Transverse pitch e (mm)
08 A-1	ANSI 40-1	EC-8-M-A	12.70	1/2	17,600	13,900	0.60	7.85	12.07	17.8	21	7.92	3.98	-	40005625
10 A-1	ANSI 50-1	EC-10-M-A	15.875	5/8	28,000	21,800	1.01	9.4	15.09	21.8	25	10.16	5.09	-	40006189
10 A-1	ANSI 50-1	EC-10-M-A GL	15.875	5/8	28,000	21,800	1.01	9.4	15.09	21.8	25	10.16	5.09	-	40004763
12 A-1	ANSI 60-1	EC-12-M-A	19.05	3/4	39,000	31,300	1.42	12.57	18.10	26.9	31	11.91	5.96	-	40005635
12 AH-1	ANSI 60-1 H	EC-12-M-AH	19.05	3/4	44,000	31,300	1.72	12.57	18.10	30.2	34.8	11.91	5.96	-	40005802
16 A-1	ANSI 80-1	EC-16-M-A ³	25.40	1	64,000	55,600	2.63	15.75	24.13	33.5	38	15.88	7.94	-	40005641
16 A-1	ANSI 80-1	EC-16-M-A GL	25.40	1	64,000	55,600	2.63	15.75	24.13	33.5	38	15.88	7.94	-	40005519
16 AH-1	ANSI 80-1 H	EC-16-M-AH ³	25.40	1	81,500	55,600	3.08	15.75	24.13	37.4	42.8	15.88	7.94	-	40005807
08 A-2	ANSI 40-2	EC-8-D-A	12.70	1/2	35,000	27,800	1.18	7.85	12.07	32.3	36.2	7.92	3.98	14.38	40005646
10 A-2	ANSI 50-2	EC-10-D-A	15.575	5/8	54,000	43,600	1.99	9.4	15.09	39.9	44	10.16	5.09	18.11	40005651
12 A-2	ANSI 60-2	EC-12-D-A	19.05	3/4	78,000	62,600	2.90	12.57	18.10	49.8	54.4	11.91	5.96	22.78	40005656
16 A-2	ANSI 80-2	EC-16-D-A	25.40	1	136,000	111,200	5.21	15.75	24.13	62.7	68.1	15.88	7.94	29.29	40005661

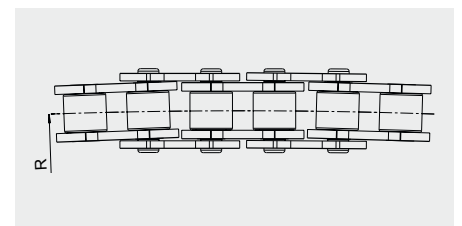
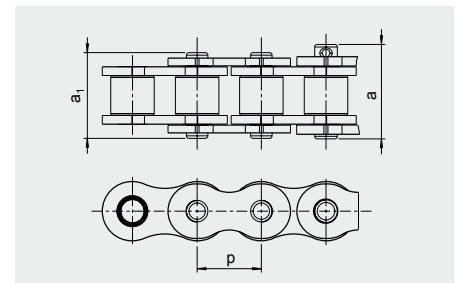
² a = conn. link with spring clip ³ Heavy version



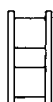
Side bow chains

Transporting, conveying and pulling
on curved shape tracks

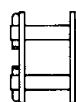
ISO	iwis designation	mm	Pitch p		Outer width		Breaking-strength EC F_b (N)	Max. Permissible chain pull power Continuous (N)	Weight (kg/m)	Radius R min (mm)	Connecting links available	Article No.
			inch	a_1 (mm)	a (mm)							
08 B-1	EC-8-M SB	12.7	1/2	16.8	17.8	9,500	1,800	0.65	350	B, S, A	40002901	



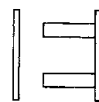
CHAIN COMPONENTS AND CONNECTING LINKS



Nr. 2 Inner links
Standard designation B



Nr. 4 Connecting link with
split pin fastening Standard
designation S



Nr. 8 Outer link
Standard designation A



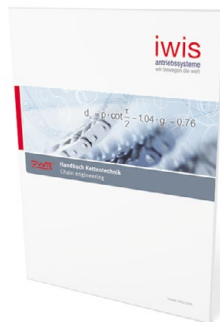
iwis Customer Service

CallBack Tel: +49 89 76909-1600 Fax: -1229
sales-muenchen@iwis.com

iwis
antriebssysteme
wir bewegen die welt



iwis Präzisionsketten
High precision chains



Handbuch Kettentechnik
Engineering Manual



MEGAlife Rollenketten
MEGAlife Roller chains



Transferketten
Transfer chains



Spitzlaschenketten
Spike chains



Gripketten
Grip chains



Scharnierbandketten
Flat Top chains



Kettenräder und
Antriebskomponenten
Sprockets and
drive components



Rollen- und Förderketten
Roller- and conveyor chains



Landmaschinenketten
Agricultural chains



Sämtliche Produktkataloge und Flyer, sowie unser
iwis Kettenhandbuch können Sie hier herunterladen:
iwis.com/downloads

All product catalogs and flyers, as well as our iwis
Engineering Manual can be downloaded on our website:
iwis.com/downloads



iwis means versatile solutions for a wide range of different drive application requirements

iwis is one of the world's leading companies in the industry and one of Europe's largest manufacturers of chain drive systems for machine and plant engineering, the packaging, printing and food industry, agricultural machinery and industrial conveying applications.

Our product portfolio contains the entire range of innovative **drive solutions**: everything from high-quality precision chain systems to a top-grade range of chains for a variety of industries. Numerous special chains that are tailored specifically to the requirements of our customers, and a **comprehensive range of chain-related accessories**, complete the portfolio.

iwis industry solutions



www.iwis.com/industries

© Copyright iwis antriebssysteme GmbH & Co. KG, Munich, Germany 2019

The contents of this catalogue are protected by the publisher's copyright. Any use of all or part of the contents without the publisher's consent is forbidden and any infringement punishable by law. Although the greatest possible care was taken in the creation of this catalogue, the publisher cannot accept liability for any errors or omissions, particularly with regard to technical issues.

Printed: SD DE 05/2019, 2.000

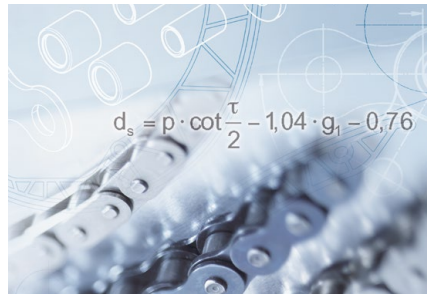


iwis Services: close to the customer



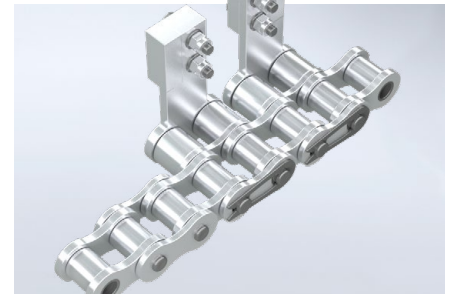
On-site advice and expert assessment

- Complete chain appraisals and plant analysis
- Expert experience and recommendations
- Application-specific solutions



Technical support

- Chain drive configuration (www.iwis.com/chain-calculation)
- Endurance tests and benchmarking
- Fatigue strength, breaking strength and metallographic analyses
- 3D printing models
- Technical documentation



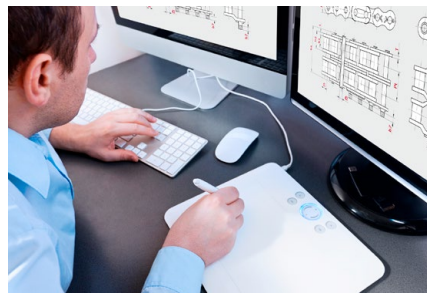
Individual solutions

- Many different attachment mounting possibilities
- New design and optimisation of attachments
- Customer-specific article labelling



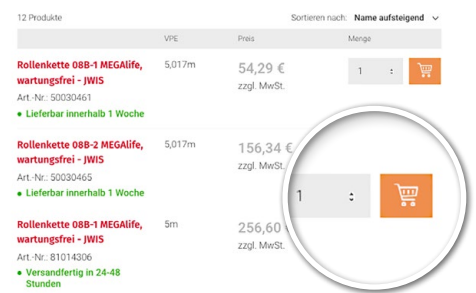
Chain Condition Monitoring

Chain elongation monitoring system (CCM-S), the ideal preventive maintenance aid.



Online tools

- CAD drawings
- Chain Finder
- Chain Configurator



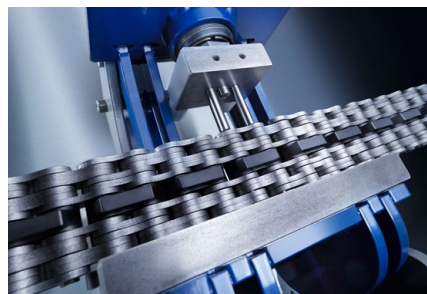
Online shop – www.iwis.com/shop

Clear, at-a-glance product information and fast-track ordering of standard-length chains.



Drive components

- Sprockets
- Idler wheels
- Chain tensioners



iwiTools

- Chain breakers
- Chain puller
- Pin extractor



Customer Service Team

Tel. +49 89 76909-1600
Fax +49 89 76909-1198
sales-muenchen@iwis.com

Our subsidiaries

Germany

iwis antriebssysteme GmbH & Co. KG
Albert-Roßhaupter-Straße 53
81369 München
Tel. +49 89 76909-1500
Fax +49 89 76909-1198
sales-muenchen@iwis.com

Germany

iwis antriebssysteme GmbH
Essener Straße 23
57234 Wilnsdorf
Tel. +49 2739 86-0
Fax +49 2739 86-22
sales-wilnsdorf@iwis.com

Germany

iwis agrisystems
Schützenweg 5
36205 Sontra
Tel. +49 5653 9778-0
Fax +49 5653 9778-26
agrisystems@iwis.com

Brazil

iwis Sistemas de Transmissão
de Energia Mecânica Ltda.
Rua Bento Rosa, nº 1816
Bairro Hidráulica
95.900-000 Lajeado, RS
Tel. +55 51 3748-7402
salesbrazil@iwis.com

China

iwis drive systems (Suzhou) Co., Ltd.
No. 266 LvliangShan Road
215153 Suzhou SND
Tel. +86 512 8566-3010
Fax +86 512 8566-3009
salescn@iwis.com

France

iwis systèmes de transmission
10, rue du Luxembourg
69330 Meyzieu
Tel. +33 4374515-70
Fax +33 4374515-71
salesfr@iwis.com

Great Britain

iwis drive systems Ltd.
Unit 8c Bloomfield Park
Bloomfield Road, Tipton
West Midlands, DY4 9AP
Tel. +44 12 15213600
Fax +44 12 15200822
salesuk@iwis.com

India

iwis engine systems India Pvt. Ltd.
Teerth Technospace
Unit No. C 409, Survey No. 103
Adjoining Mercedes Benz showroom
Baner Pune 411045 India
Tel. +91 7030922297
salesin@iwis.com

Italy

iwis antriebssysteme Italia
Tel. +39 340 9296142
Fax +49 89 7690949-1726
salesit@iwis.com

Canada

iwis drive systems, Inc.
101-19097, 26th Avenue,
Surrey BC V3Z 3V7
Tel. +1 604 560-6395
Fax +1 604 560-6397
salesca@iwisusa.com

South Korea

iwis engine systems Korea Co., Ltd.
Office No. 403-2, 322 Yanghyeon-ro
(Yatap-dong, Korea Design Center)
Bundang-Gu, Seongnam Si,
Gyeonggi-Do, Korea (ZIP) 13496
Tel. +82 31 788-7545
saleskor@iwis.com

Switzerland

iwis AG Kettentechnik
Bahnweg 4 (Postfach)
5504 Othmarsingen
Tel. +41 62 8898999
Fax +41 62 8898990
info@iwis-ketten.ch

South Africa

iwis drive systems, (Pty) Ltd.
Unit 3, 127 Koornhof Road
Meadowdale, 1613
Tel. +27 11 392-2306
Fax +27 11 392-3295
salessa@iwis.com

Czechia

iwis antriebssysteme spol. s r.o.
Písecká 893
38601 Strakonice
Tel. +420 383 411811
Fax +420 383 321695
salescz@iwis.com

Turkey

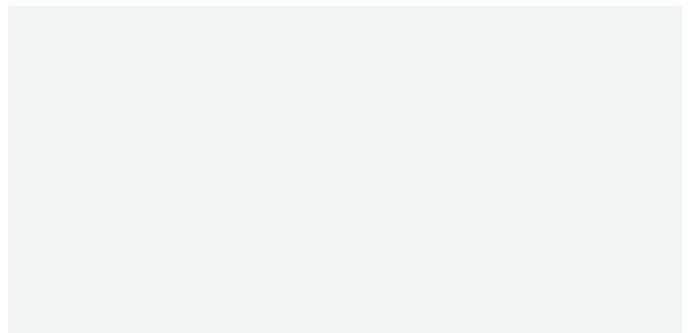
iwis tahrik sistemleri ltd. şti.
Kağıthane Ofis Park 4C-Blok
Bağlar Cad. No: 14
34406 Kağıthane-Istanbul
Tel. +90 212 939-3843
Fax +90 212 939-3701
salestr@iwis.com

USA

iwis drive systems, LLC
Building 100, 8266 Zionsville Road
Indianapolis, IN 46268
Tel. +1 317 821-3539
Fax +1 317 821-3569
sales-us@iwis.com

www.iwis.com

Your sales representative



Adicionamos movimento ao seu negócio!

Serviços

Colagens no local
Serviço 24H
Cálculos de transmissão
Formação
Projectos
Recondicionamento
Portal B2B
Visita técnica

Sede

R. António Silva Marinho, 66
4100-063 Porto | Portugal
Tel +351 226 197 360
Fax +351 226 197 361
vendasporto@juncor.pt

Filial - Montijo Comércio e Indústria
(Arm. 13/15)
EN 5 Pau Queimado - Afonseiro
2870-500 Montijo | Portugal
Tel +351 212 306 030
Fax +351 212 306 031
vendaslisboa@juncor.pt



www.juncor.pt



clientes.juncor.pt



facebook/juncor



twitter.com/juncor_sa



youtube.com/juncoraccess



linkedin.com/company/juncor-sa



pinterest.pt/juncorsa



instagram.com/juncor_sa